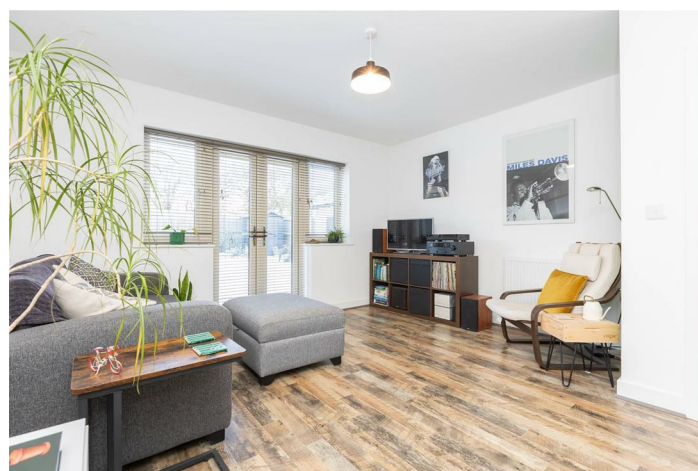
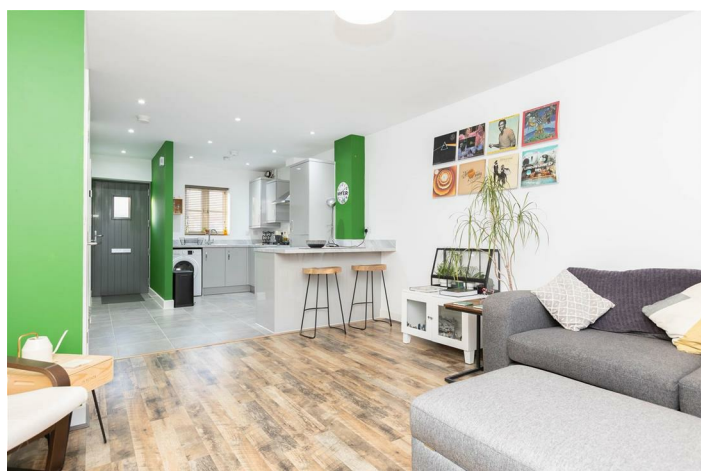


LEASEHOLD



House - End Terrace (EPC Rating: B)

24 WHITFIELD ROAD, POTTON, SANDY, SG19 2FS

Shared Ownership

£124,000



First Step



2 Bedroom House - End Terrace located in Sandy

****SHARED OWNERSHIP**** This beautifully presented end-terrace house offers a perfect blend of modern living and comfort. Built in 2020, the property spans an inviting 753 square feet, making it an ideal choice for first-time buyers or those seeking a cosy retreat.

Benefitting from a spacious open-plan reception room that provides a warm and inviting atmosphere and a modern kitchen. The property also boasts two well-proportioned bedrooms.

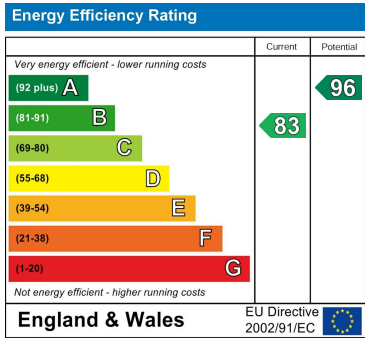
Outside, the private garden offers a delightful space for outdoor enjoyment. Additionally, the property benefits from parking for two cars.

This home is not only beautifully presented but also conveniently located, making it an excellent first purchase for those looking to settle in a friendly community. With its modern amenities and charming features, this property is sure to impress. Don't miss the opportunity to make this lovely house your new home.

Council Tax Band

C

Energy Performance Graph



Call us on
01462 659 730
sales@firststep.ltd
www.firststep.ltd

Agents Note: Whilst every care has been taken to prepare these particulars, they are for guidance purposes only. All measurements are approximate and are for general guidance purposes only and whilst every care has been taken to ensure their accuracy, they should not be relied upon and potential buyers are advised to recheck the measurements.

