



Flat 47, Elmwood Court Pershore Road, Birmingham

£109,000 Leasehold

Hadleigh Estate Agents are delighted to offer this charming one bedroom flat to purchase, offered with no upward chain.

Further benefitting from garage en-bloc.

Elmwood Court is a purpose built development situated on the Pershore Road which is a main access route to Birmingham City Centre, yet has all amenities close at hand including Birmingham University, the Queen Elizabeth Medical Complex and the new Dental Hospital. In addition the apartment has stunning views of Edgbaston Cricket Ground and Canon Hill Park is close by. The property is also opposite Calthorpe Park.





Communal Entrance

Security entrance system, lift and staircase to all floors.

Hallway

Ceiling light point, carpeted, storage cupboard, heater and access to other rooms

Lounge Diner

Having two heaters, two ceiling light points, door to side balcony and dual aspect glazed windows with panoramic views.

Kitchen

Fitted base and wall units, plumbing for washing machine and space for fridge freezer. Glazed window to side aspect and ceiling light point. Sliding window hatch between living room.

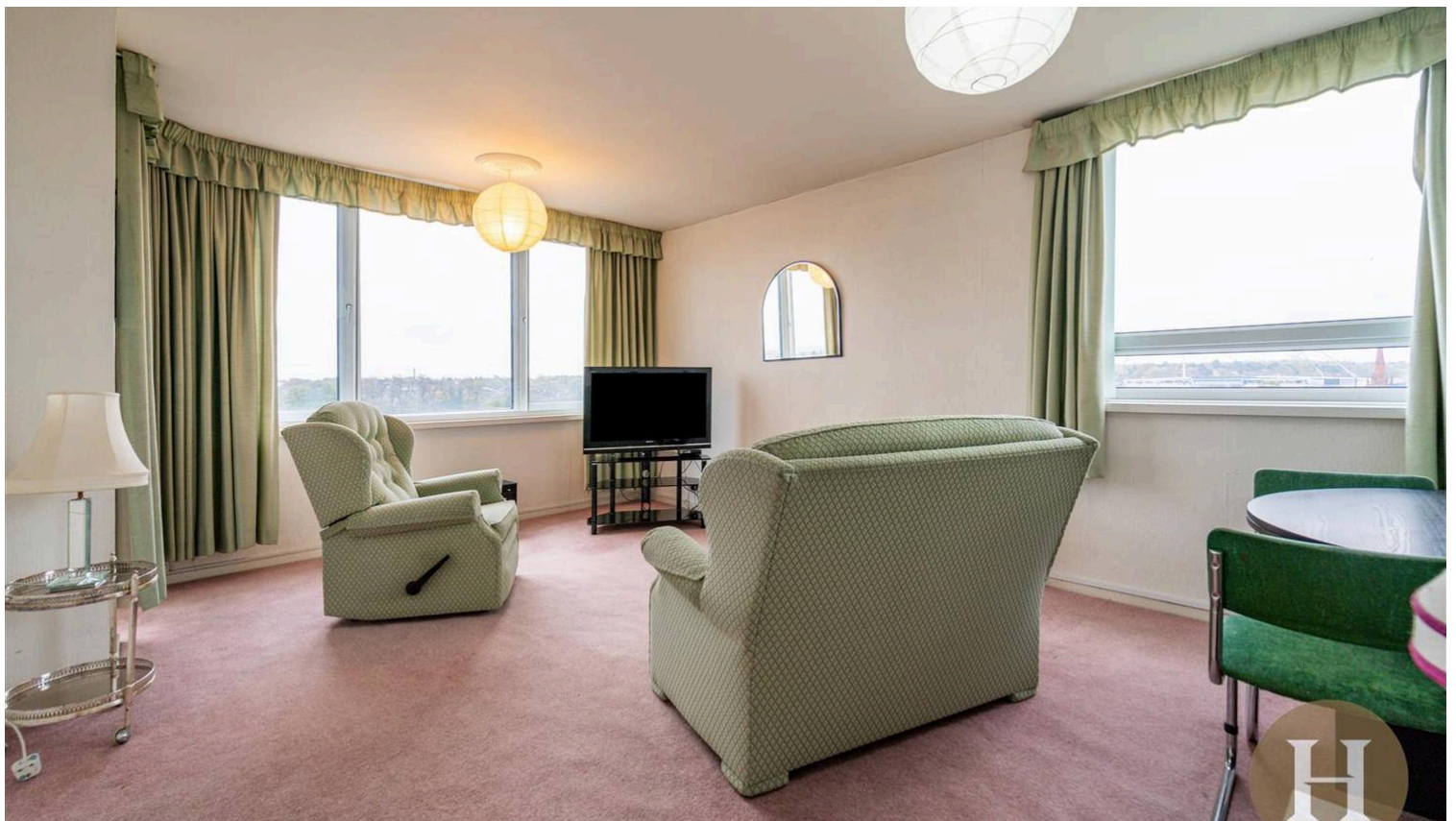


Bedroom

Double doors to living room, picture window overlooking the balcony, fitted wardrobes, ceiling light point and heater.

Bathroom

Panelled bath with electric shower over, wash hand basin, low-level WC, ceiling light point.



Council Tax band: A

Tenure: Leasehold

Years Remaining: 125

Service Charge PA: £3,264

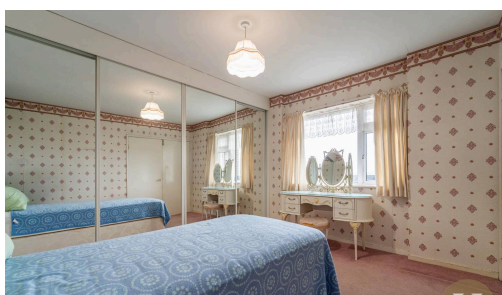
Ground Rent PA: Peppercorn

EPC Energy Efficiency Rating: D

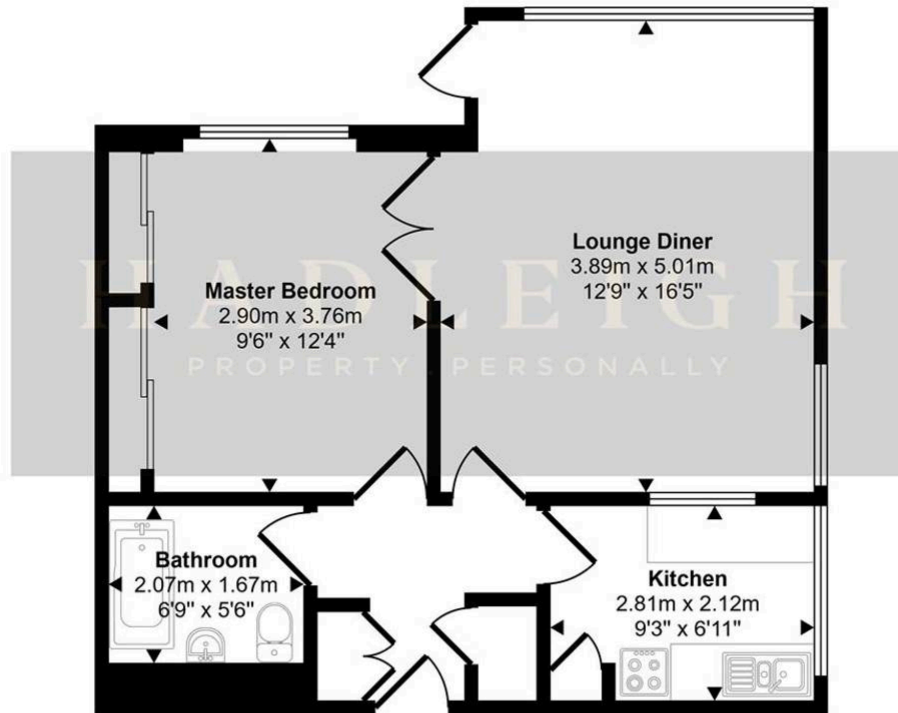
EPC Environmental Impact Rating: E



- No upward chain
- Garage en-bloc and private balcony
- Views of Edgbaston Cricket Ground



Approx Gross Internal Area
49 sq m / 531 sq ft



Floorplan

This floorplan is only for illustrative purposes and is not to scale. Measurements of rooms, doors, windows, and any items are approximate and no responsibility is taken for any error, omission or mis-statement. Icons of items such as bathroom suites are representations only and may not look like the real items. Made with Made Snappy 360.