



6 Harpenden Road

London, SE27 0AE

£2,600 Per Month

A brilliant sized three double bedroom terraced Victorian house situated in an ideal location for transport and shopping amenities. The property benefits from having a kitchen/diner, through reception room, central heating, modern bathroom suite, double glazed windows, and decent sized rear garden.

Lambeth Council

Council tax band F £2,956.93pa

The deposit is 5 weeks rent £3000.00 (based on the asking rent)

Viewing

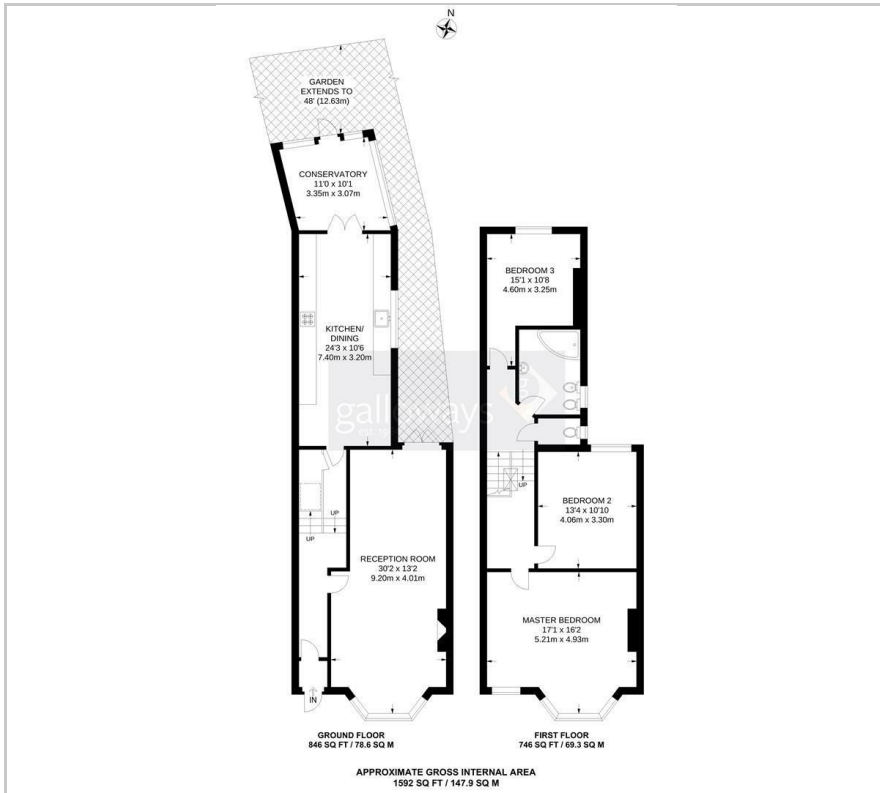
Please contact our Galloways West Norwood Office on 020 8766 6111

if you wish to arrange a viewing appointment for this property or require further information

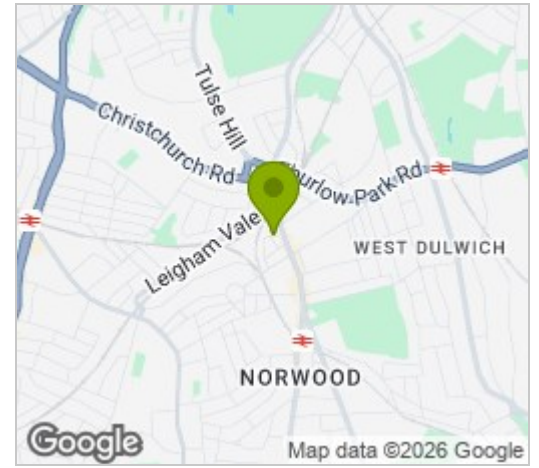
- THREE DOUBLE BEDROOMS
- VICTORIAN TERRACED HOUSE
- THROUGH RECEPTION ROOM
- HIGH CEILINGS
- CONSERVATORY
- CENTRAL HEATING
- DOUBLE GLAZED WINDOWS
- 5 MINUTES WALK TO TULSE HILL STATION
- 10 MINUTES WALK TO WEST NORWOOD STATION
- (WALKING TIMES ESTIMATED BY GOOGLE MAPS)



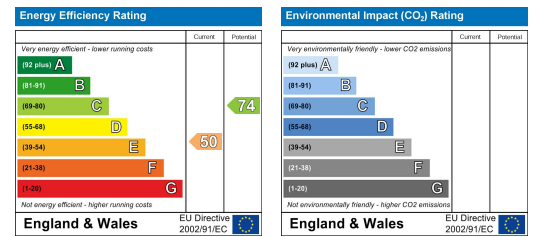
Floor Plan



Area Map



Energy Efficiency Graph



These particulars, whilst believed to be accurate are set out as a general outline only for guidance and do not constitute any part of an offer or contract. Intending purchasers should not rely on them as statements of representation of fact, but must satisfy themselves by inspection or otherwise as to their accuracy. No person in this firm's employment has the authority to make or give any representation or warranty in respect of the property.