

Head Office:
Dixon Kelley Estate Agents
1 Penn Court
Station Road, West Moors
Dorset. BH22 0JJ

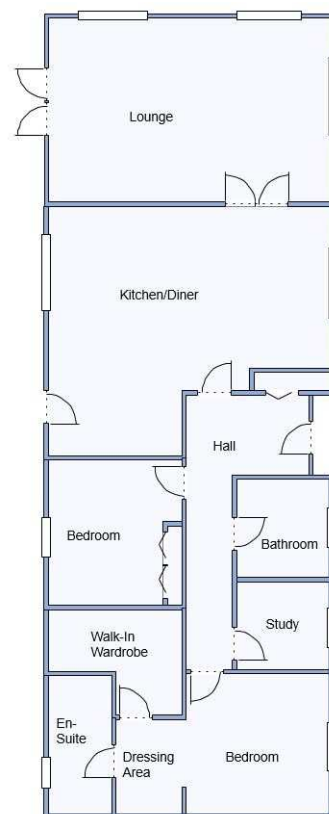
DORSET PARK HOMES

DRAFT

www.dorsetparkhomes.com

Telephone: 01202 877511

22 Montevideo Park, Chickerell, Weymouth. DT3 4GF



This drawing has been prepared for diagrammatic purpose only. Not to scale.

2-Bedroom Park Home - approx 62' x 22'

Accommodation & approximate room dimensions:

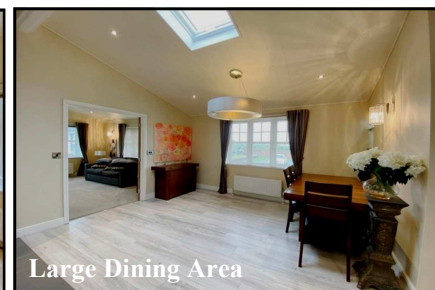
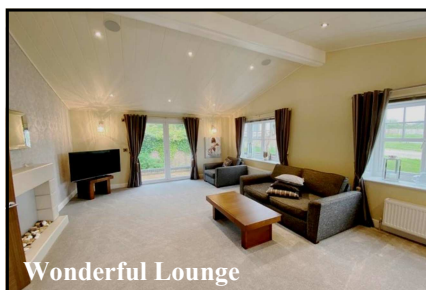
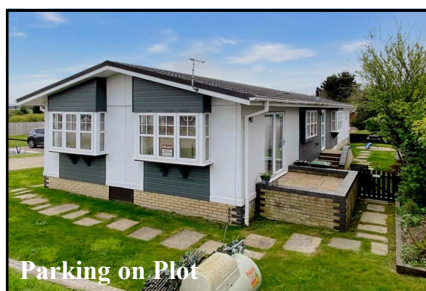
- **Spacious Hall:** Cloaks cupboard. Vaulted ceiling.
- **Kitchen/Diner:** approx 19'4" x 11'2" max. A superb room with a good range of floor and wall cupboards. Built-in double oven, hob & hood over. Integrated dishwasher, washing machine, American fridge/freezer. Water softener, water purifier & instant hot water. Wine chiller, 2 larder units, warming drawer & microwave. Granite worktops. Door to garden.
- **Lounge:** approx 21'2" x 14'. Feature fireplace. Vaulted ceiling. Double doors to Patio Area.
- **Study:** Fitted desk & storage cupboards
- **Bedroom 1:** approx 15'11" x 11' max PLUS
- **Large DRESSING ROOM**
- **Luxury En-Suite Shower Room.**
- **Bedroom 2:** approx 10'11" x 10'3". Fitted wardrobes
- **Luxury Jacuzzi Bathroom**
- **Gas Central Heating & PVCu Double-Glazing**
- **Electric Sky-Light Windows & LED Lighting**
- **Quality Fixtures & Fittings Throughout**
- **Corner plot with Delightful Private Garden**
- **Driveway for 'On-Plot' Parking**
- **Age Restriction 50+ Pets Considered**

Price: £310,000

VIEWING STRICTLY BY APPOINTMENT WITH THE VENDOR'S AGENT Dorset Park Homes 01202 877511

IMPORTANT NOTE: These particulars are believed to be correct but their accuracy is not guaranteed. They do not form part of any contract. Nothing in these particulars shall be deemed to be a statement that the property is in good structural condition or otherwise, nor that any of the services, appliances, equipment or facilities are in good working order or have been tested. Purchasers should satisfy themselves on such matters prior to purchase. Ref.W04796

Close to Coast



Pitch Fee: approx £214.58 per month including water

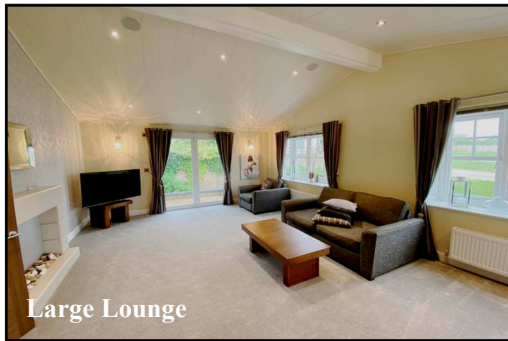
Subject to Annual Review

Council Tax Band: 'A'

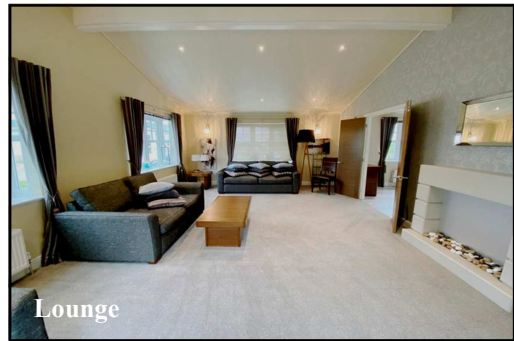
Tenure: 1983 Mobile Homes Act Agreement

The recommended specialist in Park Home sales
Partner: Simon Dixon





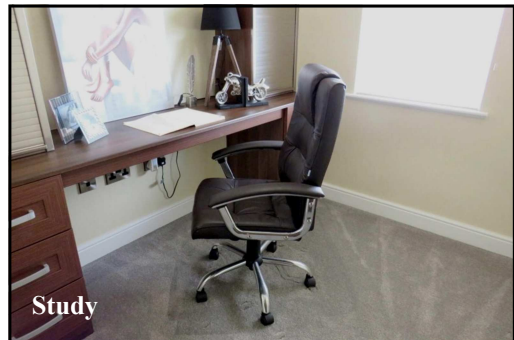
Large Lounge



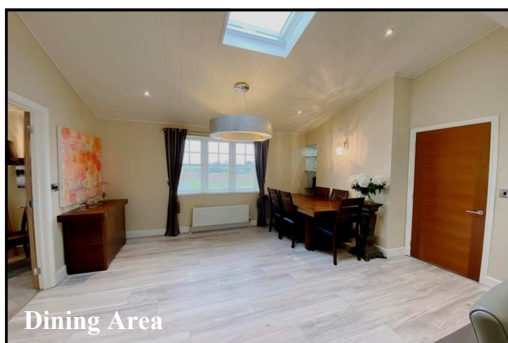
Lounge



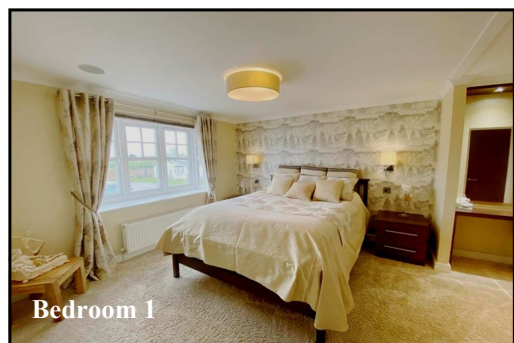
Spacious Hall



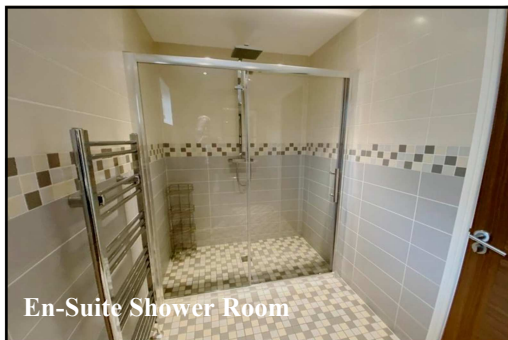
Study



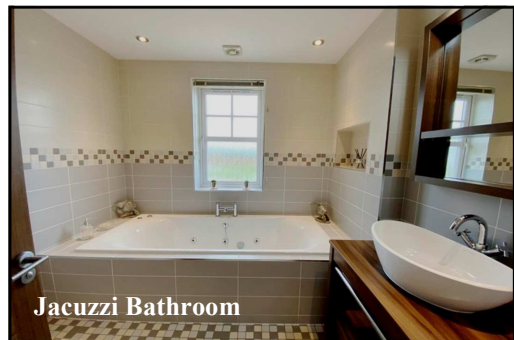
Dining Area



Bedroom 1



En-Suite Shower Room



Jacuzzi Bathroom



Stunning Kitchen/Diner with integrated appliances

Prestige 'Grand Symphony' Park Home Approx 62' x 22' Manufactured 2021 High Quality Fixtures & Fittings throughout Vaulted Ceilings with LED lighting & Sky Lights window. Corner Plot with Private Garden & Parking on Plot. Quality Residential Park close to nature walks, local amenities and outstanding coastline & the Jurassic Coastal Path.