




Coombe Way, Farnborough, GU14 7GB

£155,000

 1  1  1

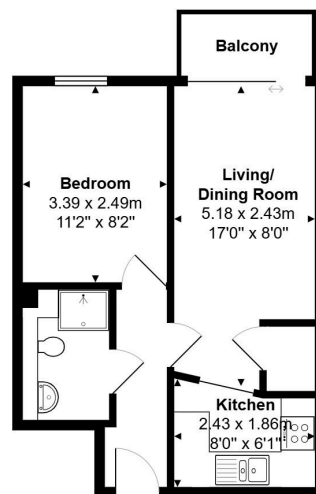


Presented in excellent decorative order is this second floor one bedroom apartment situated within minute's a walk of Farnborough Mainline Station (Waterloo 37 minutes), Town Centre and Queen Elizabeth Park.

Key Features

- No Onward Chain
- Living/Dining Room
- Fitted Kitchen
- Three Piece Shower Room
- Bike Racks & First Come First Serve Parking
- Second Floor With Stair & Lift
- West Facing Balcony
- Double Bedroom
- Town Centre Location
- Long Lease

46, Brand House, Coombe Way, Farnborough, GU14 7GB



All measurements are approximate and for display purposes only