



www.chrystals.co.im

Flat 3, 11 Windsor Road, Douglas, IM1 3LD
Asking Price £176,950

Flat 3, 11 Windsor Road, Douglas, IM1 3LD

Asking Price £176,950

A spacious and recently refurbished second floor duplex apartment, set within a converted building on Windsor Road in central Douglas. Conveniently located, the property is within easy reach of local shops, amenities, and the Douglas Promenade. The accommodation is arranged over two levels and comprises a bright living room with an archway leading into the kitchen, a modern family shower room, and a single bedroom on the main level. A staircase leads to a spacious double bedroom on the upper floor. Further benefits include access to a communal paved patio area and a parking space to the rear. Offered with no onward chain. Early viewing is strongly advised.



LOCATION

From The Rosemount Traffic light turn down Windsor Road. The property can be easily located by our For Sale Board, on the left hand side.

COMMUNAL ENTRANCE

FLAT 3 - SECOND FLOOR DUPLEX

HALLWAY

KITCHEN

7' 4" x 9' 11" (2.2m x 3.0m)

LIVING ROOM

13' 9" x 13' 9" (4.2m x 4.2m)

BEDROOM

10' 2" x 12' 8" (3.1m x 3.9m)

BATHROOM

5' 3" x 9' 6" (1.6m x 2.9m)

BEDROOM

19' 4" x 15' 9" (5.9m x 4.8m) Max

STAIRS TO UPPER FLOOR

BEDROOM

19' 4" x 15' 8" (5.9m x 4.8m)

OUTSIDE

Communal paved patio to front. 1 parking space to the rear of the building.

TENURE

LEASEHOLD - 999 years.

SERVICE CHARGE: £1250 per annum. Ground Rent £10 per annum. Management company is 11 WR Limited.

SERVICES

Mains water, electricity and drainage. Gas central heating.

VIEWING

Viewing is strictly by appointment through CHRYSTALS. Please inform us if you are unable to keep appointments.

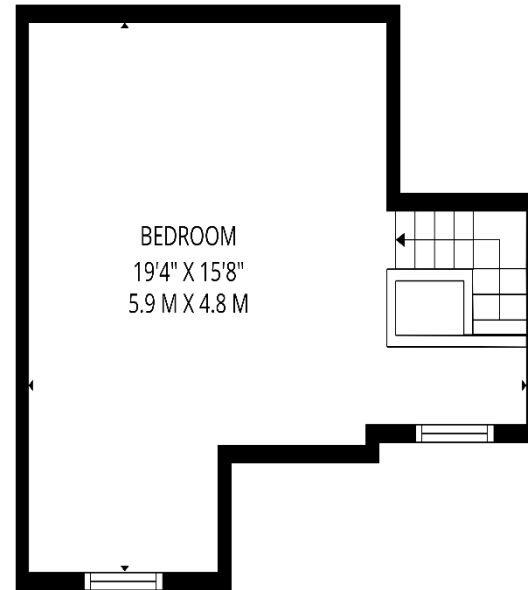
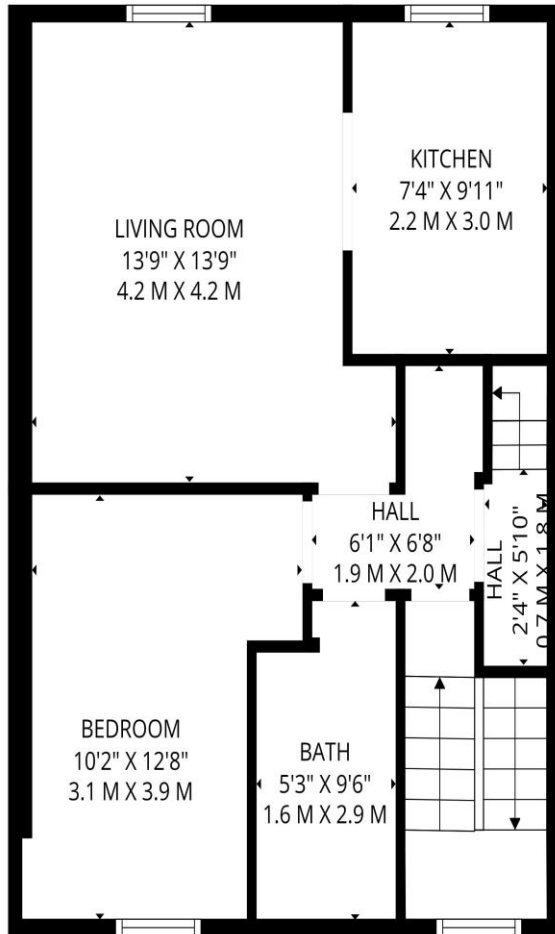
POSSESSION

Vacant possession on completion of purchase. The company do not hold themselves responsible for any expenses which may be incurred in visiting the same should it prove unsuitable or have been let, sold or withdrawn. DISCLAIMER - Notice is hereby given that these particulars, although believed to be correct do not form part of an offer or a contract. Neither the Vendor nor Chrystals, nor any person in their employment, makes or has the authority to make any representation or warranty in relation to the property. The Agents whilst endeavouring to ensure complete accuracy, cannot accept liability for any error or errors in the particulars stated, and a prospective

purchaser should rely upon his or her own enquiries and inspection. All Statements contained in these particulars as to this property are made without responsibility on the part of Chrystals or the vendors or lessors.







Since 1854



DOUGLAS

31 Victoria Street
 Douglas IM1 2SE
 T. 01624 623778
 E. douglas@chrystals.co.im

PORT ERIN

23 Station Road
 Port Erin IM9 6RA
 T. 01624 833903
 E. porterin@chrystals.co.im

COMMERCIAL

Douglas Office: 01624 625100, commercial@chrystals.co.im

RENTALS

Douglas Office: 01624 625300, douglasrentals@chrystals.co.im