



Connells

Heligan Drive
Paignton



Property Description

*** GUIDE PRICE £220,000 - £230,000 ***
Tucked away in a well-established and convenient residential location, this much-loved two-bedroom semi-detached home comes to the market for the very first time since it was built. Having been cared for by only one owner throughout the years, the property offers a wonderful opportunity for buyers seeking a home that has been truly cherished and thoughtfully maintained. Whether you are stepping onto the property ladder for the first time, searching for a sound investment opportunity, or simply looking to downsize into a manageable and comfortable home, this property offers everything needed to settle straight in while still providing exciting potential to personalise and modernise over time.

The current owner's long-term ownership speaks volumes about both the property itself and the fantastic location it occupies. Homes where owners remain for decades are often those found within welcoming communities, with practical layouts, excellent accessibility, and everyday convenience right on the doorstep. Situated close to major link roads, commuting routes, schools, and a range of local amenities, the home is ideally positioned for modern living. Shops, supermarkets, public transport connections, and leisure facilities are all within easy reach, making day-to-day life straightforward and stress-free.

On Approach

As you approach the property, you are immediately greeted by a neat frontage and driveway parking, offering valuable off-road parking that leads directly to the garage. The driveway provides practicality for homeowners and visitors alike, while the attached garage offers additional storage, workshop potential, or secure parking depending on your needs. The exterior of the home has a welcoming and cared-for appearance, hinting at the attention the property has received throughout its lifetime.

Step Inside

Stepping inside, the home instantly delivers a warm and homely feel. The accommodation is tidy, clean, and ready to move into, allowing buyers to enjoy the property immediately while gradually introducing their own style and cosmetic updates if desired. The layout has been designed with comfortable living in mind, providing well-proportioned rooms throughout and an excellent sense of natural light.

Lounge

The lounge is a particularly inviting space and serves as the heart of the home. Bright and spacious, this room comfortably accommodates a range of furniture arrangements, making it ideal for relaxing evenings, entertaining guests, or spending quality time with family. Large windows allow natural light to flood the room, enhancing the

welcoming atmosphere and creating a pleasant environment all year round. The neutral presentation further highlights the opportunity for buyers to modernise at their own pace while still enjoying a perfectly functional living space from day one.

k

Kitchen & Breakfast Room

Flowing seamlessly from the lounge is the kitchen and dining area, a practical and sociable space overlooking the rear garden. The kitchen offers excellent storage and workspace potential, while the adjoining dining area provides ample room for everyday meals or family gatherings. This part of the home naturally lends itself to modernisation and could easily be transformed into a contemporary open-plan kitchen diner should future owners wish to enhance the space further.

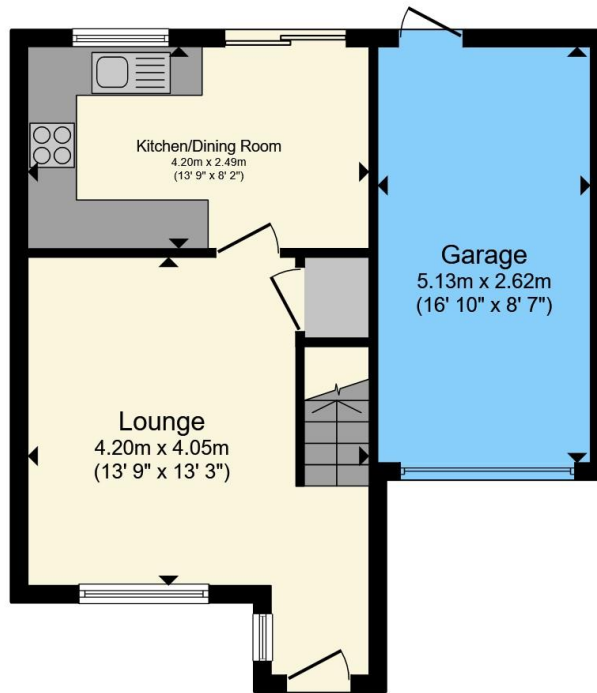
Rear Garden & Garage

One of the standout features of the property is undoubtedly the rear garden. Level, enclosed, and thoughtfully maintained, it offers a peaceful outdoor retreat with mature shrubs, established planting borders, and plenty of room to enjoy the outdoors. Whether you are an enthusiastic gardener, have children needing a safe place to play, or simply want somewhere to relax during warmer months, this garden caters to a wide variety of lifestyles. Its mature greenery creates a lovely sense of privacy while still being manageable and easy to maintain. Access from the garden into the garage also adds another layer of practicality, making storage and garden maintenance particularly convenient.

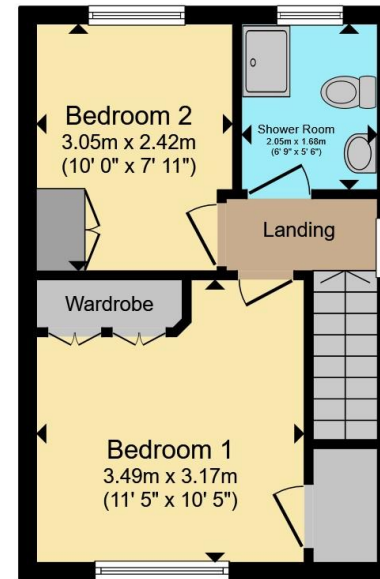








Ground Floor



First Floor

Total floor area 71.1 m² (765 sq.ft.) approx

This floor plan is for illustrative purposes only. It is not drawn to scale. Any measurements, floor areas (including any total floor area), openings and orientation are approximate. No details are guaranteed, they cannot be relied upon for any purpose and they do not form part of any agreement. No liability is taken for any error, omission or misstatement. A party must rely upon its own inspection(s). Powered by www.propertybox.io



To view this property please contact Connells on

T 01803 400 888
E paignton@connells.co.uk

51 Hyde Road
 PAIGNTON TQ4 5BP

EPC Rating: D Council Tax
 Band: C

Tenure: Freehold

view this property online connells.co.uk/Property/PGN313551



1. MONEY LAUNDERING REGULATIONS Intending purchasers will be asked to produce identification documentation at a later stage and we would ask for your co-operation in order that there will be no delay in agreeing the sale. 2. These particulars do not constitute part or all of an offer or contract. 3. The measurements indicated are supplied for guidance only and as such must be considered incorrect. Potential buyers are advised to recheck measurements before committing to any expense. 4. We have not tested any apparatus, equipment, fixtures, fittings or services and it is in the buyers interest to check the working condition of any appliances.

Connells Residential is registered in England and Wales under company number 1489613, Registered Office is Cumbria House, 16-20 Hockliffe Street, Leighton Buzzard, Bedfordshire, LU7 1GN. VAT Registration Number is 500 2481 05.

See all our properties at www.connells.co.uk | www.rightmove.co.uk | www.zoopla.co.uk

Property Ref: PGN313551 - 0003