



OVER 60?

Secure this property
for up to **59% less!**

Price

£280,000

Freehold

2x  1x  1x 

**Lysander Way,
Waterlooville,
Hampshire, PO7**

cubitt & west
Helping you move forwards



Main features

- Immaculately presented throughout
- Popular Tempest location
- Allocated parking with ev charger
- Sunny aspect rear garden with side access
- Close to local amenities and travel links

Accommodation

GROUND FLOOR

Porch

Lounge/Diner: 18'9 x 12'6 (5.72m x 3.81m)

Kitchen: 12'6 x 8'3 (3.81m x 2.52m)

FIRST FLOOR

Landing

Bedroom 1: 12'7 x 10'5 (3.84m x 3.18m)

Bedroom 2: 12'6 x 8'2 (3.81m x 2.49m)

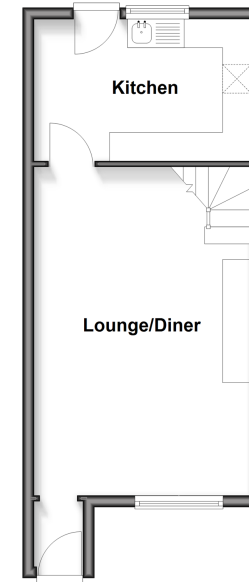
Bathroom

OUTSIDE

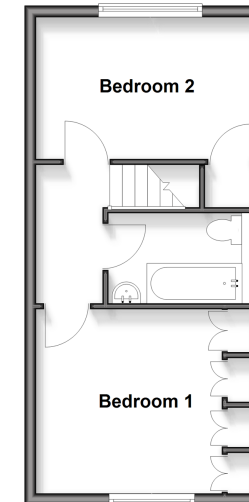
Front and Rear Gardens

Allocated Parking

Ground Floor
Approx. 32.9 sq. metres (354.4 sq. feet)



First Floor
Approx. 31.9 sq. metres (342.9 sq. feet)



Call Waterlooville - 02392 267244 ■ cubittandwest.co.uk

- Legal advice should be taken to verify fixtures/fittings, planning, alterations and/or lease details
- Appliances & services are untested, dimensions are approximate and floor plans are not to scale
- Through a Homewise Home For Life Plan people aged 60+ can secure this property for up to 50% less, by purchasing a Lifetime Lease.



42410913/20251129/EH/EC