

Hilltop Close, West Cheshunt



**** OPEN DAY, SATURDAY 17th JANUARY BETWEEN 12 - 3PM. STRICTLY BY APPOINTMENT ONLY ****

Nestled in the desirable Hilltop Close, West Cheshunt, this impeccably presented three-bedroom semi-detached family home offers a perfect blend of comfort and style. The property boasts bright and airy interiors throughout, enhanced by a wealth of modern and contemporary features, creating a welcoming atmosphere that is ideal for modern day family living.

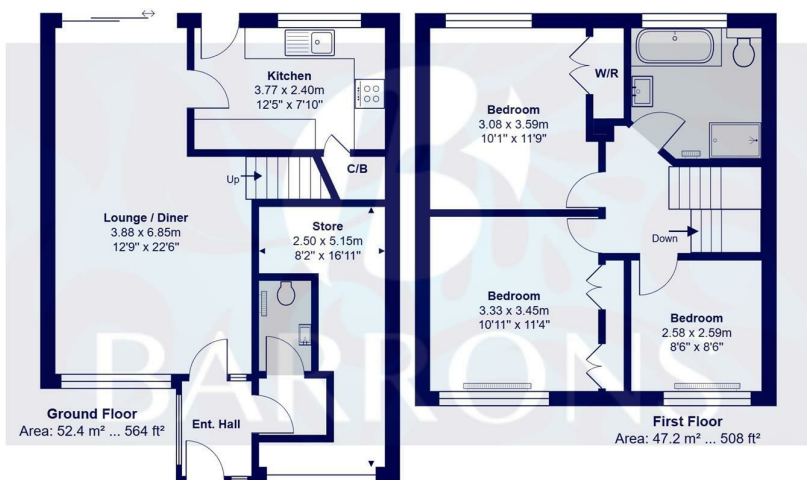
Upon entering, you will find a spacious LOUNGE / DINER that serves as the heart of the home, with UNDER FLOOR HEATING which also flows in to the modern KITCHEN, providing an excellent space for relaxation and entertaining. The three well-proportioned bedrooms offer ample space for family members or guests, while the MODERN and LUXURIOUS family bathroom boasting a JACUZZI BATH with BUILT-IN TV and separate SHOWER CUBICLE ensures convenience for all daily routines.

The location is highly sought after, with a selection of highly regarded schools nearby, making it an excellent choice for families. Additionally, residents can enjoy the natural beauty of Cheshunt Country Park, perfect for leisurely walks and outdoor activities. For those who appreciate shopping, the Brookfield Farm Shopping Centre is conveniently located within close proximity, offering a variety of retail options.

This semi-detached house is not just a property; it is a wonderful family home in a vibrant community. With its appealing modern day features and prime location, it presents an exceptional opportunity for those looking to settle in West Cheshunt.

Property Price £500,000





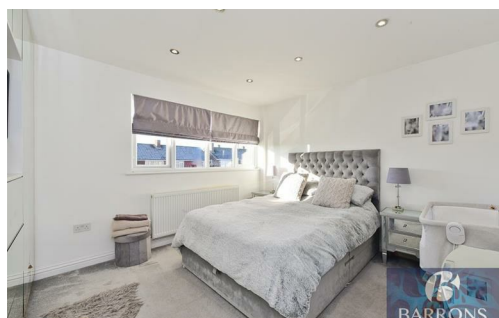
Hilltop Close, Hertfordshire EN7

Total Area: 99.6 m² ... 1072 ft²

All measurements are approximate and for display purposes only



- AN IMPECCABLY PRESENTED AND MODERN THREE BEDROOM FAMILY HOME
- THREE WELL PROPORTIONED BEDROOMS
- CONTEMPORARY AND MODERN FAMILY BATHROOM, WITH JACUZZI BATH, BUILT-IN TV & SHOWER CUBICLE.
- UNDERFLOOR HEATING THROUGH OUT THE LOUNGE / DINER & KITCHEN
- BRIGHT AND AIRY INTERIORS
- HIGHLY SOUGHT AFTER LOCATION IN WEST CHESHUNT
- A SELECTION OF HIGHLY REGARDED SCHOOLS WITHIN WALKING DISTANCE
- CHESHUNT COUNTRY PARK & GOLF CLUB CLOSE BY
- BROOKFIELD FARM SHOPPING CENTRE WITHIN CLOSE PROXIMITY
- OWN DRIVEWAY



- Extensive local knowledge • Professional personal service • Full colour property particulars • Bespoke Marketing
- Major Website Portals • 24 Hour feedback pledge • Latest Technology

25 The Old Building, Bishops College, Churchgate, Hertfordshire, EN8 9XQ • t: 01707 877808 • t: 01992 845 842 • www.barronsresidential.co.uk



Disclaimer: "these property particulars, including floor plans, are set out as a general outline only for guidance and do not constitute any part of an offer or contract. Please note that all measurements above have been taken with a sonic tape measure and therefore may be subject to a small margin of error. A buyer is advised to obtain verification from their solicitor or surveyor. The agent has not tested any apparatus, equipment, fixture and fittings or services and therefore cannot verify that they are in working order or fit for the purpose" All enquiries and negotiations must be carried out through Barrons Residential.