



LOUGHBOROUGH PARK, SW9

£375,000

One Double Bedroom
One Bathroom
Stylish Apartment
Modern Development
Sought After Location
Energy Rating: B

@marshandparsons
marshandparsons.co.uk

MARSH &
PARSONS



ABOUT THE PROPERTY

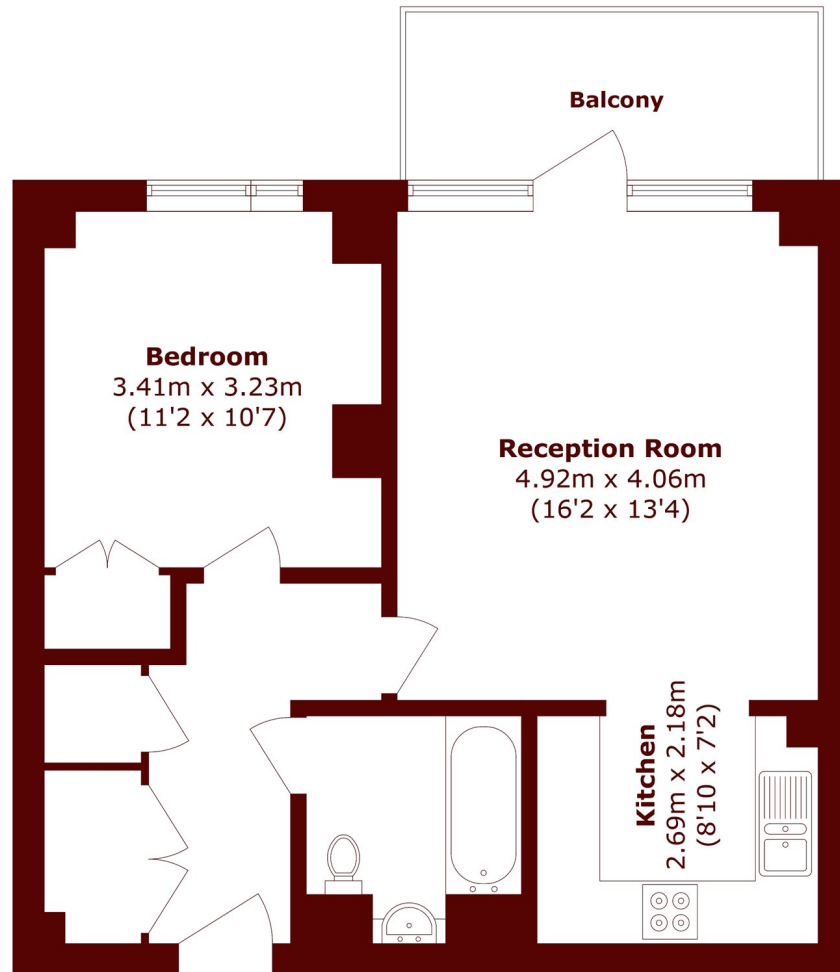
An impeccable and spacious one double apartment located in a modern and sought after development in central Brixton.

The property has been finished to an excellent standard throughout with built-in appliances and spacious living with the open plan kitchen and reception providing direct access to the private balcony and a three piece family bathroom.

Hartland House is situated in a modern development within easy walking distance to the vast array of shops, cafes and restaurants of central Brixton and Herne Hill



STEP INSIDE LOUGHBOROUGH PARK



Total area (approx.): 52.8 sq. m (568.3 sq. ft)
Balcomy area (approx.): 6.3 sq. m (67.8 sq. ft)

Brixton
020 7733 4595

Energy Rating: B We aim to make our particulars both accurate and reliable. However, they are not guaranteed; nor do they form part of an offer or contract. If you require clarification on any points then please contact us, especially if you're traveling some distance to view. Please note that appliances and heating systems have not been tested and therefore no warranties can be given as to their good working order

**MARSH &
PARSONS**