



ASKING PRICE

**£1,000,000**

**Quebec Square**

Kent, TN16 1TD

## PROPERTY SUMMARY

The Old House known formerly as the "Old House at Home " is a beautifully restored Grade II listed property believed to date back to the early 16th century, with later additions. Once a very popular public house at the centre of Westerham life, it now offers spacious and versatile accommodation. Character features including exposed wall and ceiling timbers, inglenook and brick fireplaces, panelled walls, radiator covers, and stained glass windows. The property is well proportioned and benefits from a bespoke fitted kitchen with granite work surfaces, a library overlooking the stream, cellar which could have a multitude of uses, a stunning master suite and three further bedrooms. The property is situated in the heart of Westerham within walking distance of Westerham high street with it's array of restaurants, pubs and boutique shops. Walks to the countryside are direct from the doorstep.

5



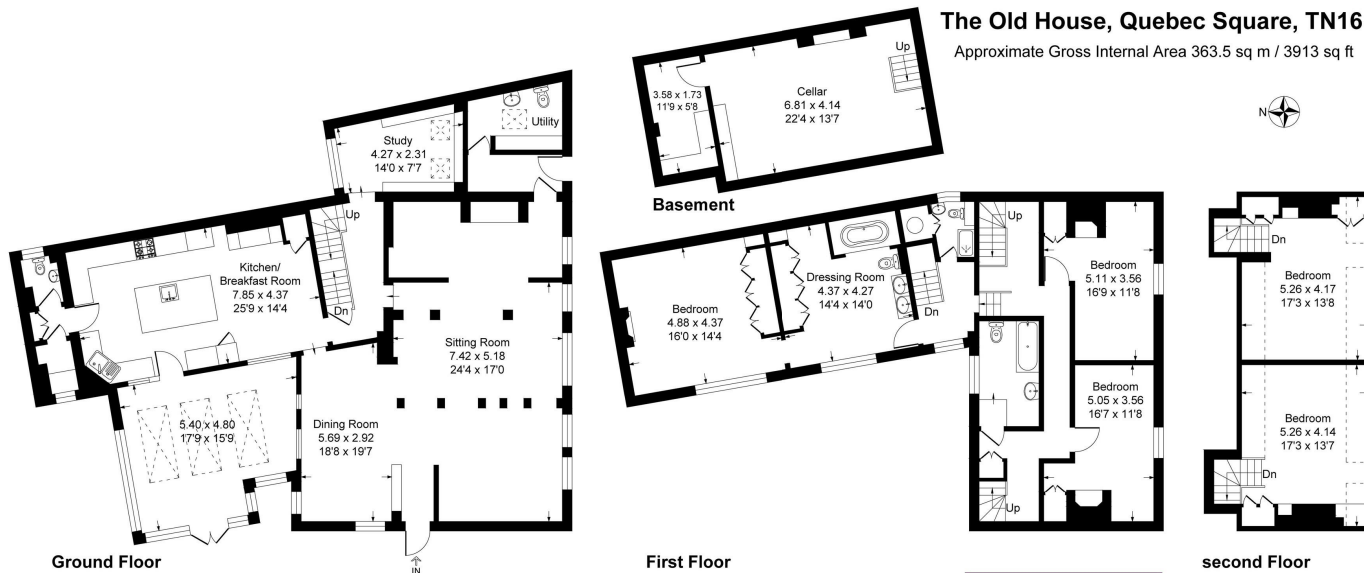
3



3







This plan is for layout guidance only. Not drawn to scale unless stated. Windows and door openings are approximate. Whilst every care is taken in the preparation of this plan, please check all dimensions, shapes and compass bearings before making any decisions reliant upon them.  
Produced By Planpix



**LOCAL AUTHORITY**

**TENURE**

Freehold

**EPC RATING**

**COUNCIL TAX BAND**

G

**VIEWINGS**

By prior appointment only

Energy Efficiency Rating		Current	Potential
Very energy efficient - lower running costs			
(92 plus) <b>A</b>			
(81-91) <b>B</b>			
(69-80) <b>C</b>			
(55-68) <b>D</b>			
(39-54) <b>E</b>			
(21-38) <b>F</b>			
(1-20) <b>G</b>			
Not energy efficient - higher running costs			
<b>England &amp; Wales</b>	EU Directive 2002/91/EC		

Agents Note: Whilst every care has been taken to prepare these particulars, they are for guidance purposes only. All measurements are approximate and are for general guidance purposes only and whilst every care has been taken to ensure their accuracy, they should not be relied upon and potential buyers/tenants are advised to recheck the measurements



**OFFICE ADDRESS**

1&2 The Grange  
Westerham  
Kent  
TN16 7AH

**OFFICE DETAILS**

01959 587 460  
infowh@sinclairhammelton