



Waterside Road, Wellingborough NN8 1PD

welcome to

Waterside Road, Wellingborough

A spacious two bedroom Coach house with off road parking situated with easy access to the train station & town centre. Ideal for first time buyers or investors, en suite to master bedroom and generous living accommodation.

Entrance Hall

Frosted double glazed window to the side elevation and stairs rising to first floor landing.

Lounge

181' x 106' (55.17m x 32.31m)

Two double-glazed windows to the front elevation and central pendant light fitting.

Kitchen

78' x 54' (23.77m x 16.46m)

Skylight to rear elevation, 1 1/2 bowl single drainer stainless steel sink with worksurfaces, base and wall mounted storage units, built in oven hob with ex cooker hood over, built in fridge/ freezer with dishwasher, built in washing machine and a boiler above the worksurfaces.

First Floor Landing

Skylight to rear elevation and built in storage cupboard.

Bedroom One

119' x 87' (36.27m x 26.52m)

Double glazed window to the front elevation and built-in hanging space.

En- Suite

Skylight to rear elevation, suite comprising wash hand basin with shower and a low level WC.

Bedroom Two

109' x 91' (33.22m x 27.74m)

Double glazed window to the front elevation and hatch to loft space.

Bathroom

Panelled Bath, wash hand basin, low level WC, ceiling lights with extractor fan and tiling to splash back areas.





view this property online williamhbrown.co.uk/Property/WBR113927



welcome to

Waterside Road, Wellingborough

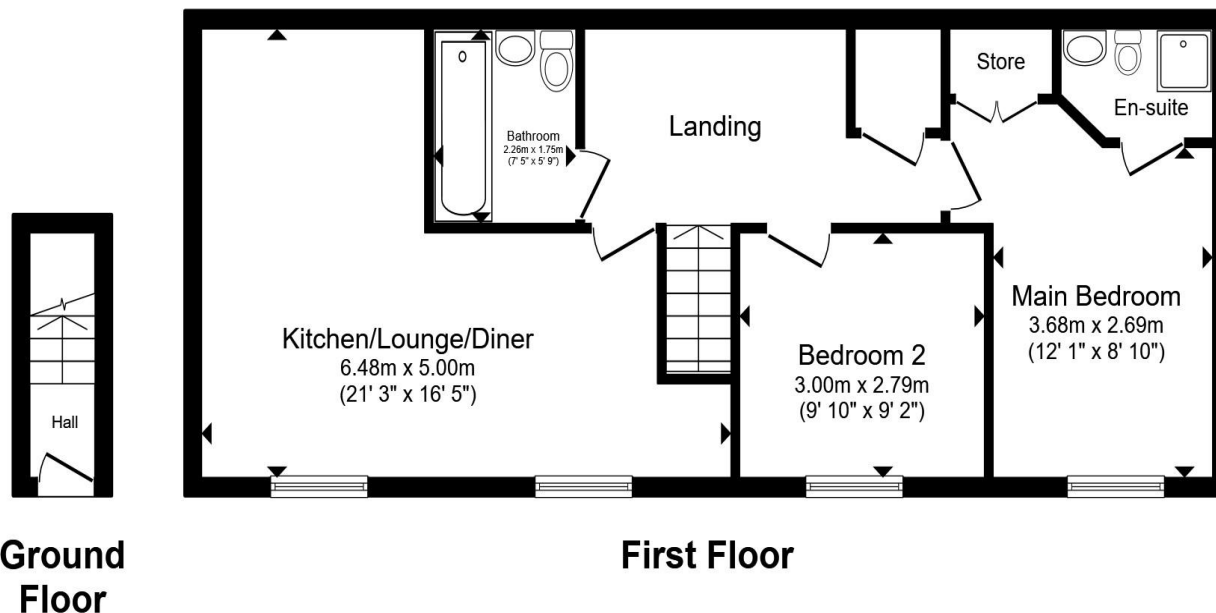
- Spacious Two Bedroom Apartment
- Ideal For First Time Buyer or Investor
- Off Road Parking & External Storage
- Easy Access to Town Centre & Train Station
- No Chain

Tenure: Freehold EPC Rating: C

Council Tax Band: B

offers over

£200,000



Total floor area 64.0 m² (689 sq.ft.) approx

This floor plan is for illustrative purposes only. It is not drawn to scale. Any measurements, floor areas (including any total floor area), openings and orientation are approximate. No details are guaranteed, they cannot be relied upon for any purpose and they do not form part of any agreement. No liability is taken for any error, omission or misstatement. A party must rely upon its own inspection(s). Powered by www.propertybox.io



view this property online williamhbrown.co.uk/Property/WBR113927



Property Ref:
WBR113927 - 0009

1. MONEY LAUNDERING REGULATIONS Intending purchasers will be asked to produce identification documentation at a later stage and we would ask for your co-operation in order that there is no delay in agreeing the sale. 2. These particulars do not constitute part or all of an offer or contract. 3. The measurements indicated are supplied for guidance only and as such must be considered incorrect. Potential buyers are advised to recheck measurements before committing to any expense. 4. We have not tested any apparatus, equipment, fixtures or services and it is in the buyers interest to check the working condition of any appliances. 5. Where an EPC, or a Home Report (Scotland only) is held for this property, it is available for inspection at the branch by appointment. If you require a printed version of a Home Report, you will need to pay a reasonable production charge reflecting printing and other costs. 6. We are not able to offer an opinion either written or verbal on the content of these reports and this must be obtained from your legal representative. 7. Whilst we take care in preparing these reports, a buyer should ensure that his/her legal representative confirms as soon as possible all matters relating to title including the extent and boundaries of the property and other important matters before exchange of contracts.

William H Brown is a trading name of Sequence (UK) Limited which is registered in England and Wales under company number 4268443, Registered Office is Cumbria House, 16-20 Hockliffe Street, Leighton Buzzard, Bedfordshire, LU7 1GN. VAT Registration Number is 500 2481 05.

william h brown



01933 276622



wellingborough@williamhbrown.co.uk



5 Sheep Street, WELLINGBOROUGH,
Northamptonshire, NN8 1BL



williamhbrown.co.uk