



OVER 60?

Secure this property
for up to **59% less!**

Price

£350,000

Freehold

3x  1x  2x 

**Mount Pleasant Road,
Dartford, Kent, DA1**

Wards
Helping you move forwards



Main features

- **Lovely end of terrace house**
- **Spacious living areas**
- **Large basement providing additional living or storage space**
- **Recently refurbished throughout**
- **Rear garden ideal for summer barbecues**

Accommodation

GROUND FLOOR

Hallway
 Lounge: 13'1 x 12'2 (3.99m x 3.71m)
 Dining Room: 8'11 x 8'10 (2.72m x 2.69m)
 Kitchen: 13'0 x 9'10 (3.97m x 3.00m)
 Bathroom

SPLIT LEVEL FIRST FLOOR

Landing
 Bedroom 1: 15'5 x 10'10 (4.70m x 3.30m)
 Bedroom 2: 13'1 x 9'6 (3.99m x 2.90m)
 Bedroom 3: 9'10 x 8'10 (3.00m x 2.69m)

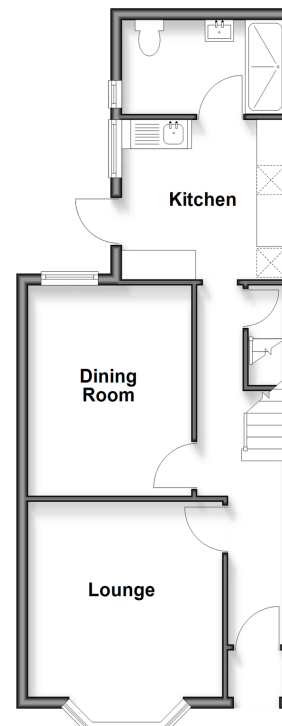
OUTSIDE

Front Garden
 Rear Garden

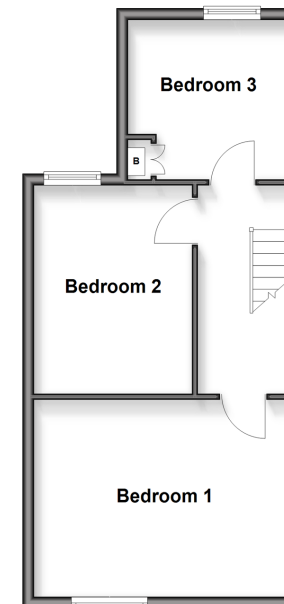
BASEMENT

Cellar

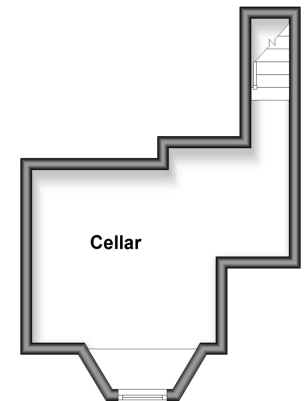
Ground Floor
 Approx. 44.3 sq. metres (476.9 sq. feet)



Split Level First Floor
 Approx. 40.1 sq. metres (431.9 sq. feet)



Basement
 Approx. 15.0 sq. metres (161.7 sq. feet)



Call Dartford - 01322 288211 ■ wardsofkent.co.uk

■ Legal advice should be taken to verify fixtures/fittings, planning, alterations and/or lease details
 ■ Through a Homewise Home For Life Plan people aged 60+ can secure this property for up to 50% less, by purchasing a Lifetime Lease

■ Appliances & services are untested, dimensions are approximate and floor plans are not to scale



18183570/20260102/MP/JH