



Park Brow Drive | | Liverpool | L32 9RF

£141,000

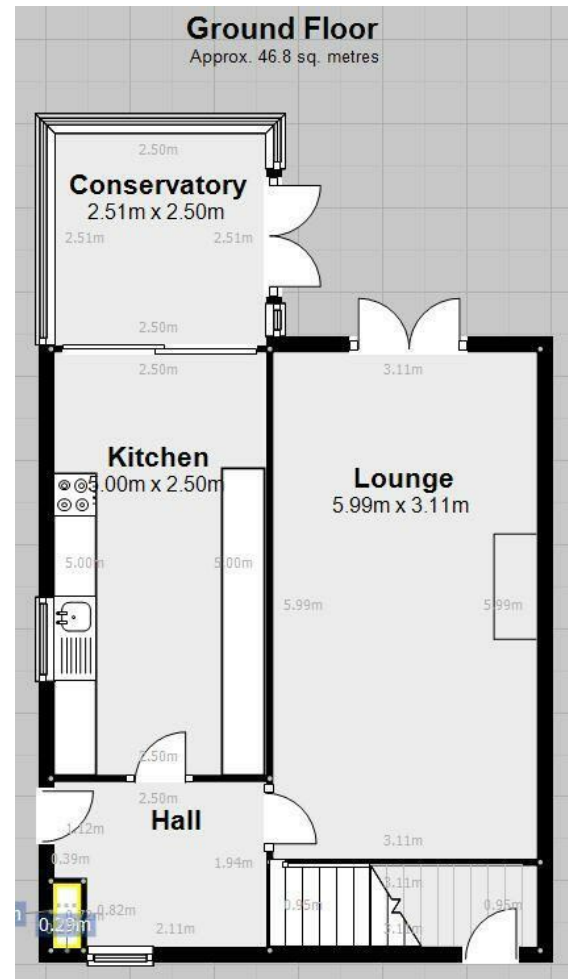


Park Brow Drive |  
 Liverpool | L32 9RF  
 £141,000

Located on Park Brow Drive, Liverpool, this delightful end terrace house offers a perfect blend of comfort and convenience. Spanning an inviting 785 square feet, the property features a well-proportioned reception room, ideal for both relaxation and entertaining guests.

The house boasts two spacious bedrooms, providing ample space for a small family or professionals seeking a comfortable living environment. The bathroom is thoughtfully designed, ensuring functionality and ease of use.

- 2 cosy bedrooms
- Spacious reception room
- 785 sq ft living space
- Easy access to transport links
- Viewing recommended
- Modern bathroom
- End terrace house
- Close to local amenities
- Ideal for families
- Conservatory



Energy Efficiency Rating		Current	Potential
<i>Very energy efficient - lower running costs</i>			
(92 plus)	A		
(81-91)	B		
(69-80)	C		
(55-68)	D		
(39-54)	E		
(21-38)	F		
(1-20)	G		
<i>Not energy efficient - higher running costs</i>			
<b>England &amp; Wales</b>		EU Directive 2002/91/EC	

Council Tax Band A  
 EPC Rating

14 Park Brow Drive  
 Kirkby  
 Merseyside  
 L32 6QP  
 0151 289 8585  
 jodie@dorankennedy.co.uk