

est 1979

Jeremy  
Leaf & Co.



King Street, N2

£2,400 Per Month

- Balcony
- Part furnished
- 2 bedroom house
- EPC rating B
- Pets considered
- Underfloor heating
- Deposit free option
- Council tax band D

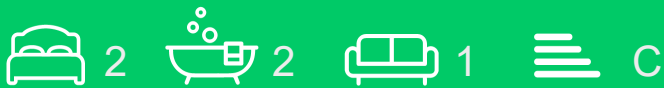
98 High Road, London, N2 9EB  
020 8444 5222

eastfinchley@jeremyleaf.co.uk  
<https://www.jeremyleaf.co.uk/>

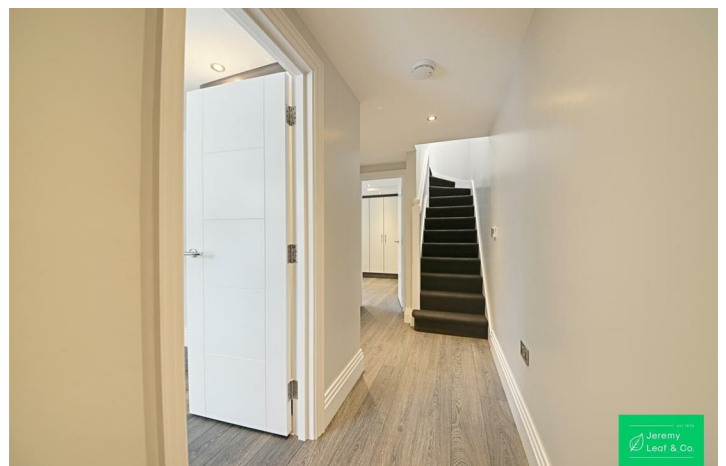
# King Street, East Finchley, N2 8DY

We offer a modern, contemporary two double bedroom house located close to shops and cafés in the heart of East Finchley Old Village. This high-specification property offers a bright open-plan living space with a fitted kitchen, two bedrooms (one with an en-suite WC), a white bathroom/WC with shower over bath, a front-facing balcony off the lounge, vaulted ceilings, underfloor heating to the ground floor, gas central heating, double glazing, and a side passage suitable for bike storage.

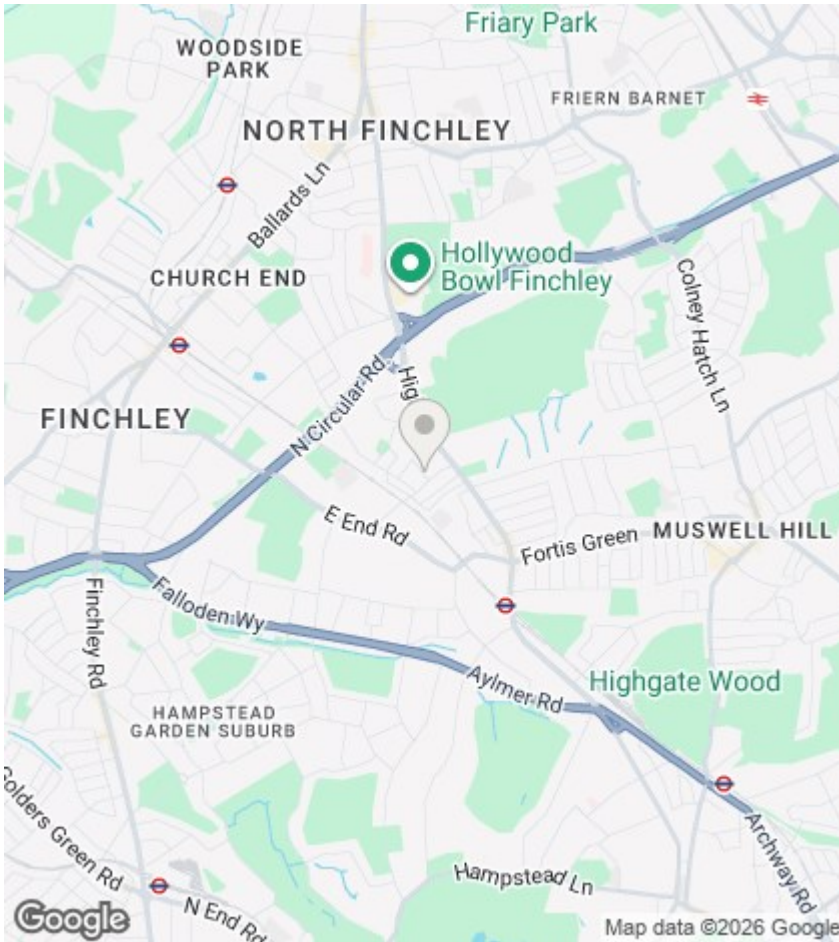
East Finchley Underground Station (Zone 3) is a 10–12 minute walk away or a short bus ride, and the location provides easy access to both the North Circular and the A1. Offered unfurnished and available from 10th August. EPC Rating: C. Council Tax Band: D.



Council Tax Band: D







## Directions

## Viewings

Viewings by arrangement only. Call 020 8444 5222 to make an appointment.

## EPC Rating:

C

Energy Efficiency Rating		Current	Potential
Very energy efficient - lower running costs			
(92 plus) <b>A</b>			
(81-91) <b>B</b>			
(69-80) <b>C</b>		76	81
(55-68) <b>D</b>			
(39-54) <b>E</b>			
(21-38) <b>F</b>			
(1-20) <b>G</b>			
Not energy efficient - higher running costs			
<b>England &amp; Wales</b>		EU Directive 2002/91/EC	

