



Wapping High Street, E1W

£525,000

 2  1  1  C

- Two Bedroom Apartment
- Ground Floor
- Access to a Private Terrace Area

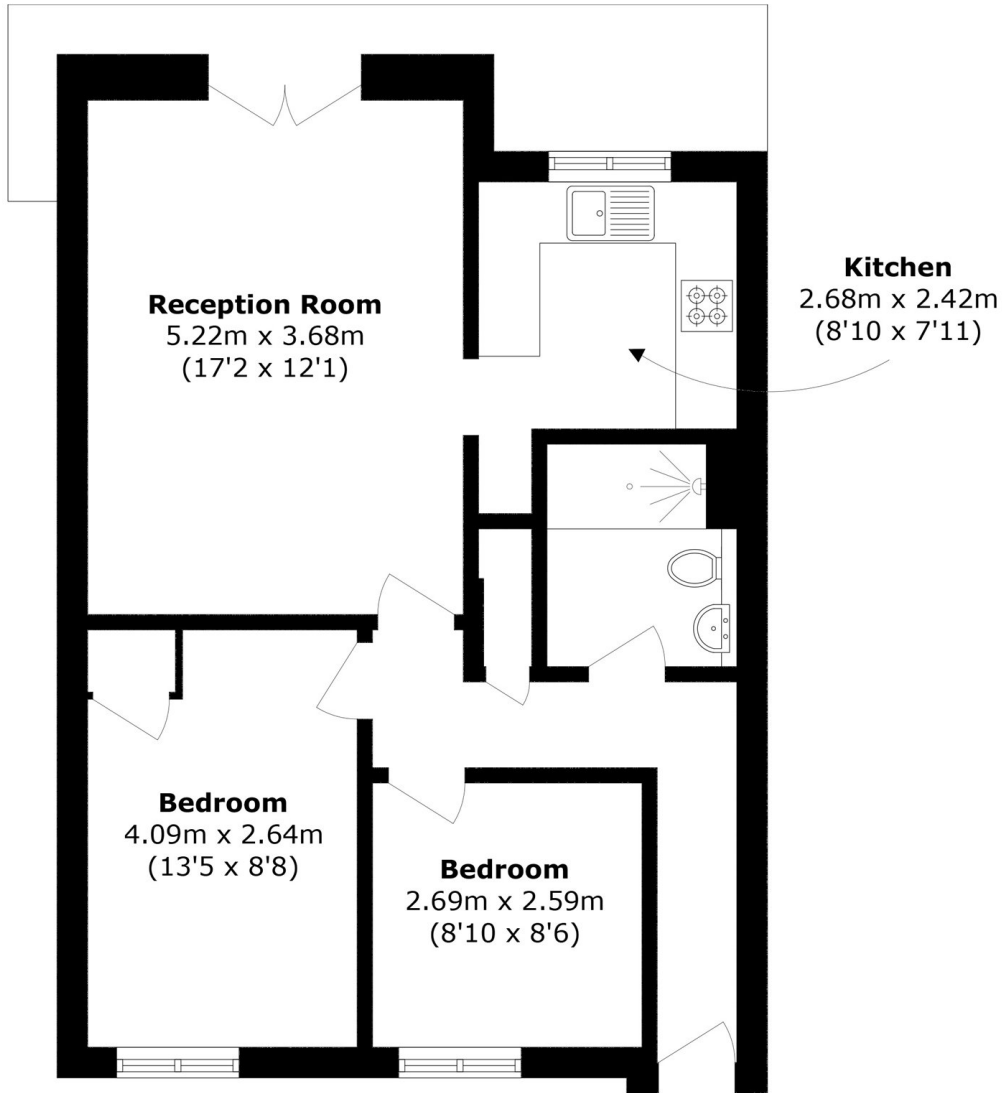
- West Wapping
- Secure Allocated Parking Space
- 0.4 Miles to Wapping Station



Ea2 are pleased to offer this well presented and located two bedroom ground floor apartment in West Wapping. Both bedrooms face a quite inner courtyard. The property benefits from an allocated parking space and access to a private terrace area. Located opposite of Hermitage Memorial Park offering excellent views of Tower Bridge. Offered with a long lease.

Offering great access to the City, Canary Wharf & Shoreditch from Wapping Station. Approximately 0.8 Miles from Tower Hill Station. Nearby St Katharine's Docks offers a wide selection of pubs, bars, cafe's and restaurants.





Total area (approx.): 57.5 sq. m (618.9 sq. ft)

35A Wapping High Street,
 London, E1W 1NR
 020 7665 5589
ea2group.com