



2 Tramway Court Shipston Road, Stratford-Upon-Avon

Guide Price **£265,000**

**SHELDON
BOSLEY
KNIGHT**

LAND AND
PROPERTY
PROFESSIONALS

2 Tramway Court Shipston Road

Stratford-Upon-Avon, Stratford-Upon-Avon

Ground floor apartment in gated development near Stratford centre. Two double bedrooms, en-suite, modern kitchen, parking, communal gardens. No onward chain. Ideal for downsizers or first-time buyers.

Council Tax band: E

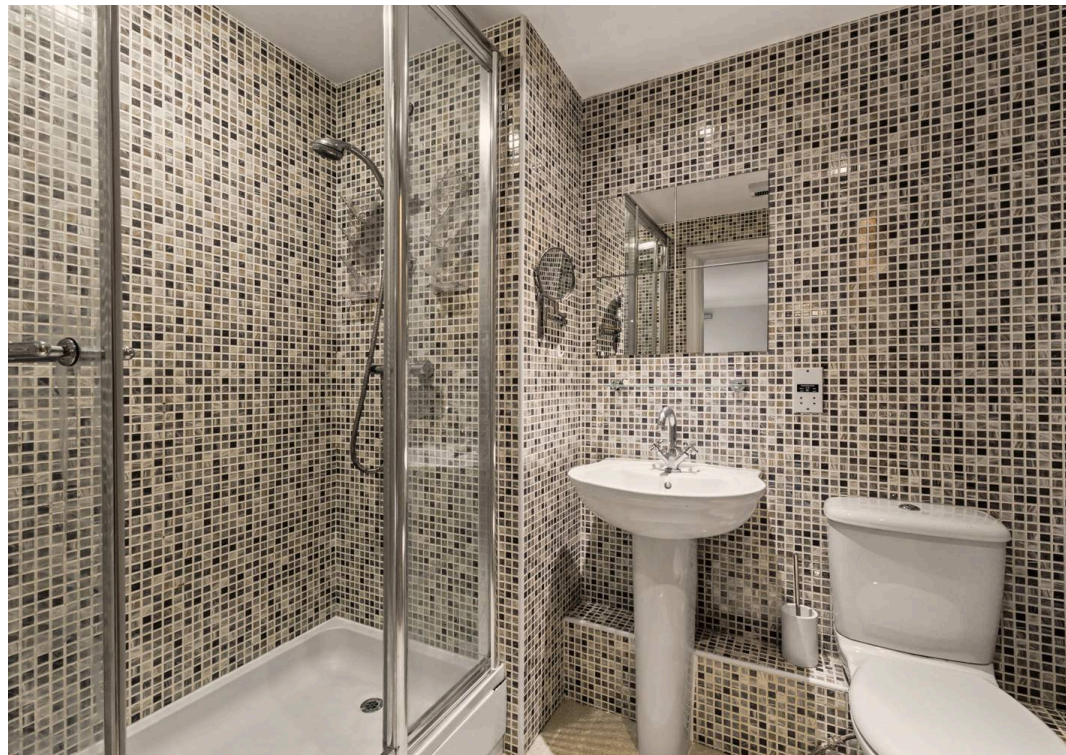
Tenure: Leasehold

EPC Energy Efficiency Rating: C

EPC Environmental Impact Rating: C

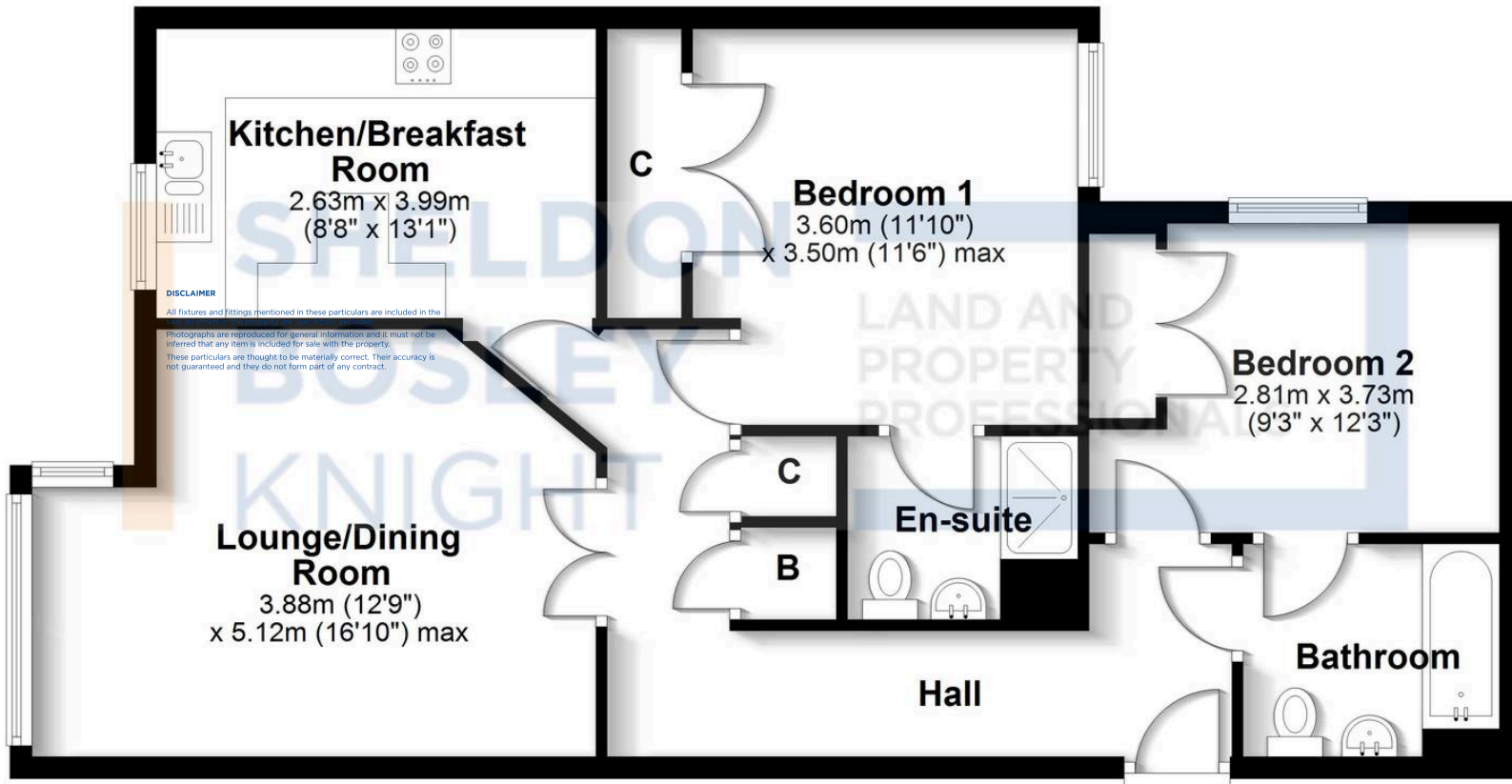
- Exclusive Gated Development
- Within 1 Mile Of Town Centre
- Ground Floor Apartment
- Two Double Bedrooms With Built In Wardrobes
- En-Suite & Separate Bathroom
- Allocated Parking Space
- No Onward Chain





Ground Floor

Approx. 76.5 sq. metres (823.4 sq. feet)



Total area: approx. 76.5 sq. metres (823.4 sq. feet)

All efforts have been made to ensure the measurements are accurate on this floor plan, however these are for guidance purposes only.

Plan produced using PlanUp.

Sheldon Bosley Knight Stratford-Upon-Avon

Sheldon Bosley Knight, 35-36 Rother Street - CV37 6LP

01789387887 · stratfordsales@sheldonbosleyknight.co.uk · www.sheldonbosleyknight.co.uk/

DISCLAIMER

All fixtures and fittings mentioned in these particulars are included in the sale, all others in the property are specifically excluded.

Photographs are reproduced for general information and it must not be inferred that any item is included for sale with the property.

These particulars are thought to be materially correct. Their accuracy is not guaranteed and they do not form part of any contract.