



Courtfield Gardens, SW5

£1,800,000

A beautifully presented four-bedroom duplex apartment arranged over the first and second floors of an elegant Victorian conversion, overlooking the garden square. Combining period charm with modern comfort, the property benefits from high ceilings and large windows. Ideally suited for family living, this superb flat enjoys a prestigious setting within one of the area's most sought-after garden squares.

Ideal for a wide choice of shops and restaurants on Gloucester Road, this property offers a full range of amenities, as well as easy access across London through its transport links.

Features

- First Floor Apartment
- Private Balcony
- High Ceilings
- Abundance Of Natural Light
- No Ongoing Chain
- Highly Sought After Location



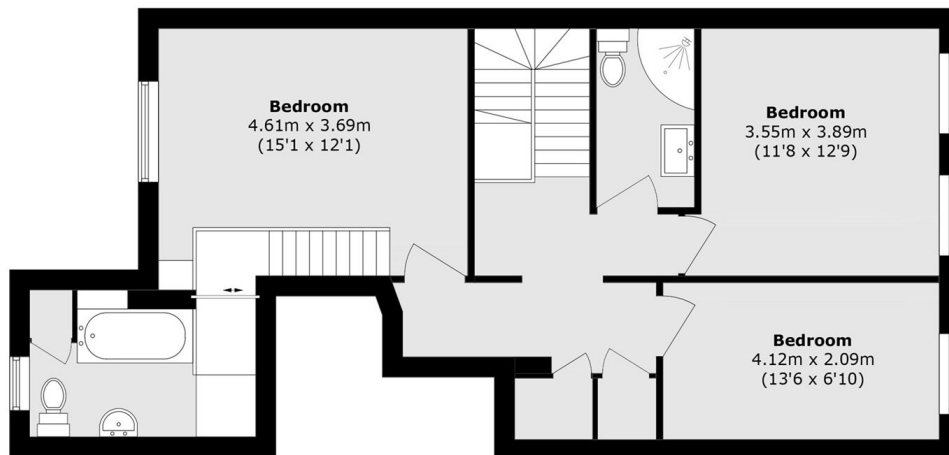
Courtfield Gardens, SW5

The flat is entered on the first floor into a welcoming hallway. To the front of the property is a bright and spacious reception room featuring wood flooring, ample space for dining, and impressive floor-to-ceiling windows with patio doors opening onto a private terrace. The separate kitchen is well-equipped with integrated appliances, including a dishwasher and washing machine. Also on this floor is a versatile second reception room, which could serve as a fourth bedroom or study, along with a convenient guest WC. All bedrooms are arranged over the second floor.

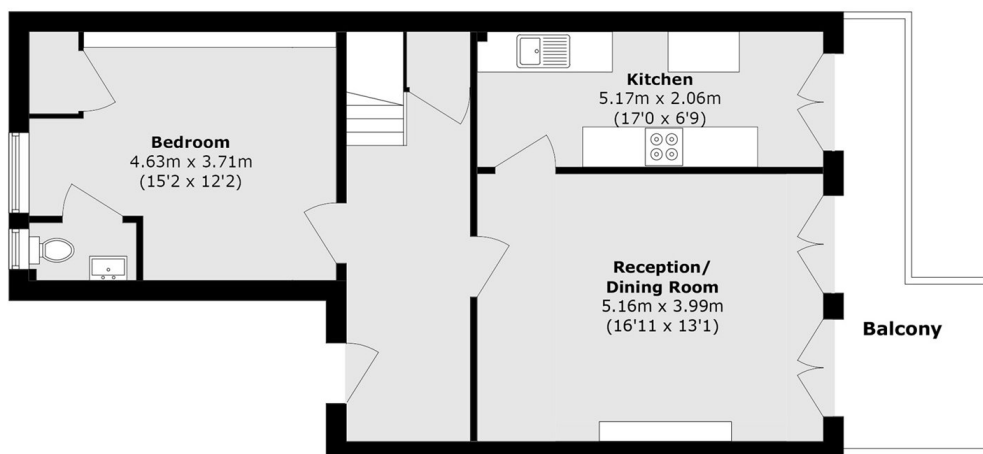
The principal bedroom is positioned at the rear of the property and benefits from fitted storage and an en-suite tiled bathroom with a shower over the bath. There are two further double bedrooms, both with fitted storage, served by a newly refurbished family bathroom, also featuring a shower over the bath.



Courtfield Gardens, London, SW5



Second Floor



First Floor

Total area (approx.): 129.9 sq. m (1398.2 sq. ft)

Balcony area (approx.): 8.9 sq. m (95.7 sq. ft)