



RESIDENCE  
MANCHESTER



A808 Railings 5 Shale Lane  
Middlewood Locks, Salford, M5 4BU

**£1,575 PCM**



2



2



1



B

## A808 Railings 5 Shale Lane

Middlewood Locks, Salford, M5 4BU

Middlewood Locks is an award-winning canalside neighbourhood and we are pleased to introduce the new phase, now available to rent with immediate move-ins.

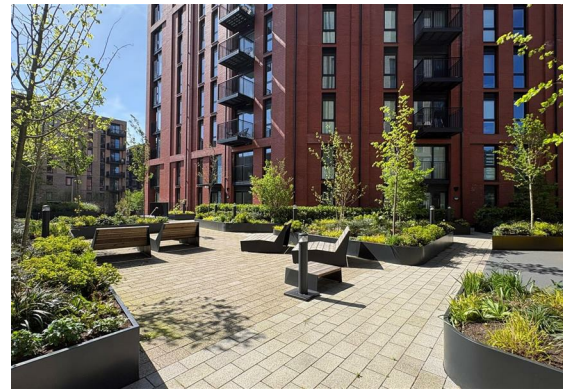
This 2-bedroom, 2-bathroom apartment has been thoughtfully designed and offers a high specification throughout, including a fully fitted kitchen with integrated appliances, contemporary bathroom, double-glazed windows, and access to a secure parcel system.

The apartment is offered unfurnished – giving you the freedom to furnish and style the property to your own taste

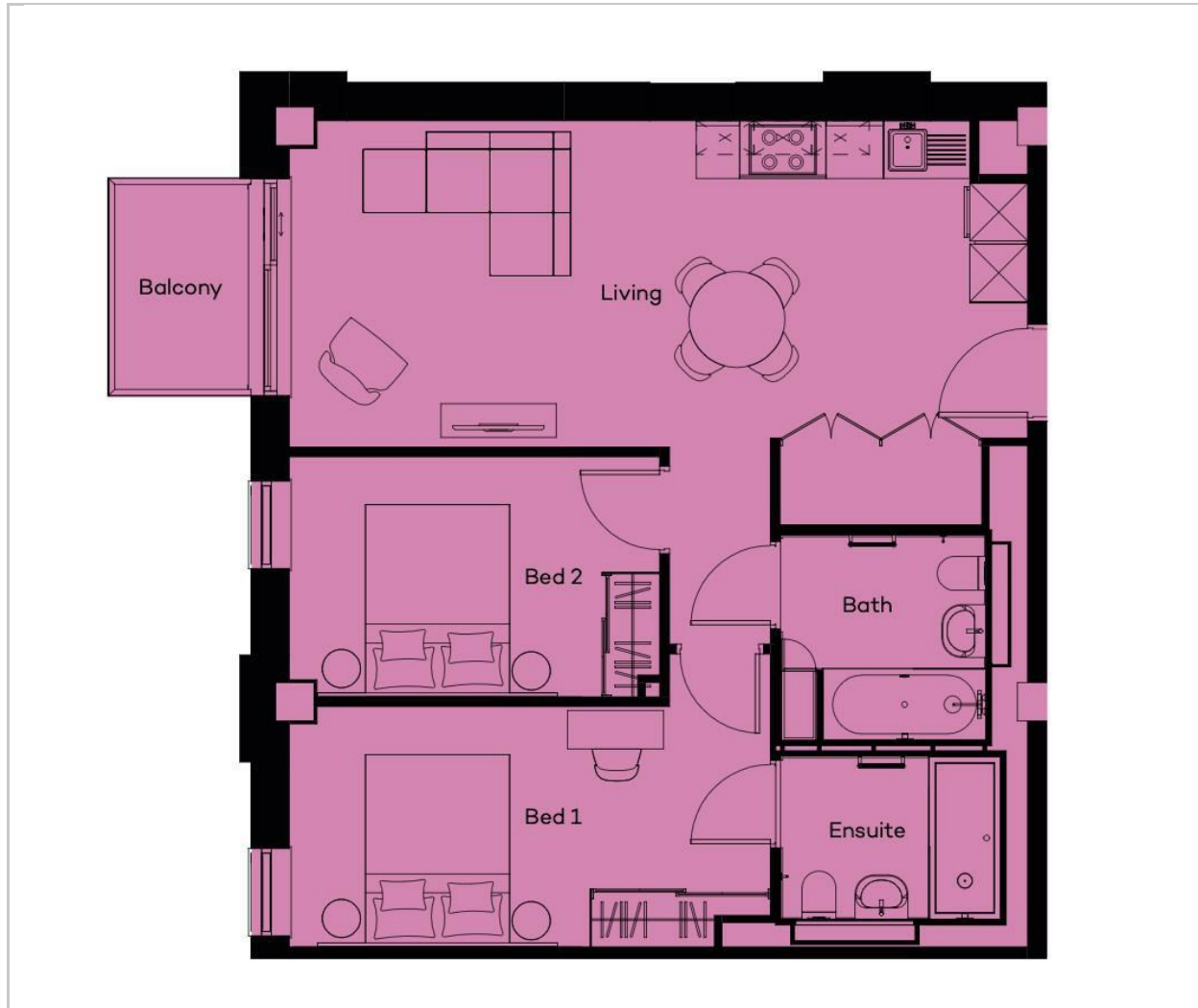
With a vibrant waterside setting and green public spaces, it brings an exciting addition to the neighbourhood.

- Brand New Development
- Two Double Bedroom, Two Bathroom
- Offered Unfurnished With An Option To Furnish At An Additional Cost
- Canalside Neighbourhood
- Available Immediately
- EPC Rating B
- Secure Parcel System
- 10 Minute Walk Into Manchester City Centre
- Spacious Balcony
- Pet Friendly





## Floor Plan



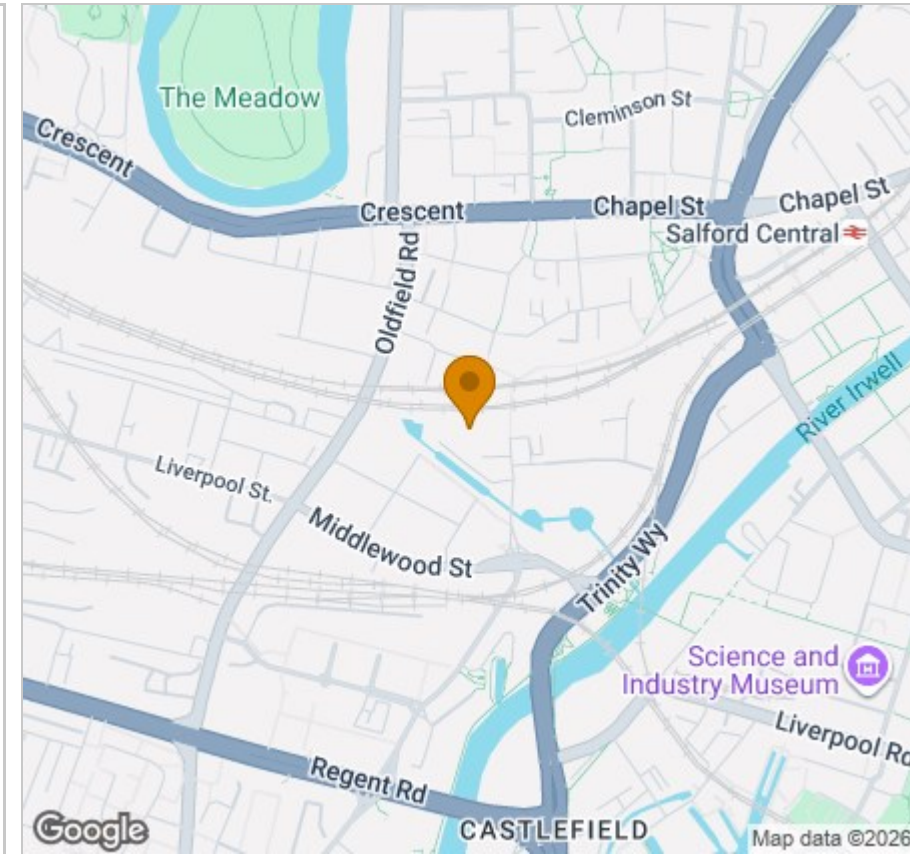
## Viewing

Please contact our Reside Manchester Office on 0161 837 2840 if you wish to arrange a viewing appointment for this property or require further information.

These particulars, whilst believed to be accurate are set out as a general outline only for guidance and do not constitute any part of an offer or contract. Intending purchasers should not rely on them as statements of representation of fact, but must satisfy themselves by inspection or otherwise as to their accuracy. No person in this firm's employment has the authority to make or give any representation or warranty in respect of the property.

Upper Ground, 4 Jordan Street, Manchester, Greater Manchester, M15 4PY  
 Tel: 0161 837 2840 Email: [info@residemanchester.com](mailto:info@residemanchester.com) [www.reside-property.com](http://www.reside-property.com)

## Area Map



## Energy Efficiency Graph

