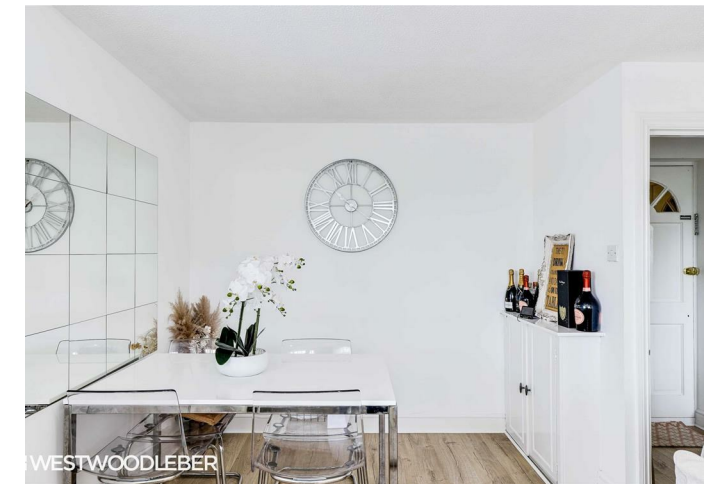




WV WESTWOODLEBER

**WV WESTWOODLEBER**  
LET US GUIDE YOU HOME

Courtyard Mews, Chapmore End, Ware, SG12 0PW  
Offers in excess of £220,000



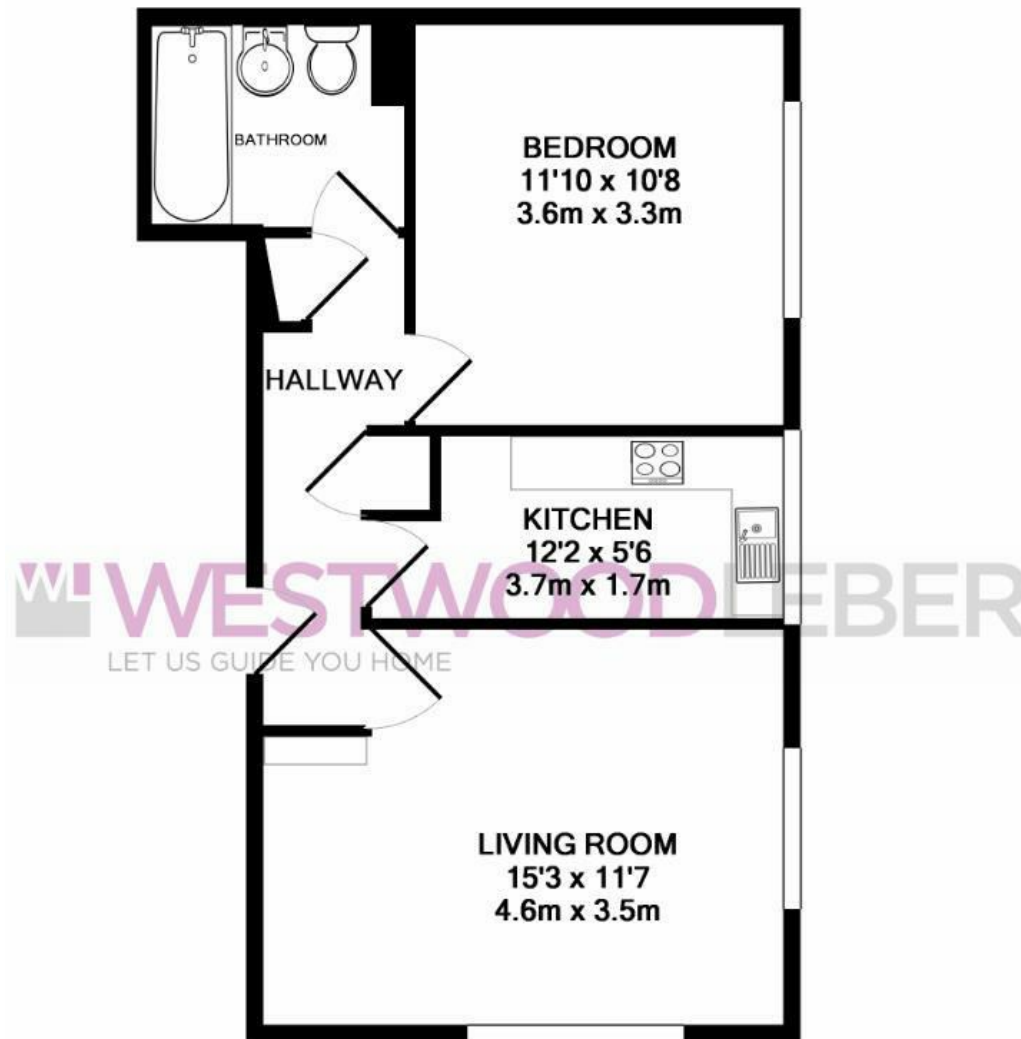
## Courtyard Mews, Chapmore End, Ware, SG12 0PW

**\*\* CHAIN FREE \*\*** Westwood Leber are delighted to bring to the market this deceptively spacious one double bedroom first floor apartment. This fantastic property is located on a private residential area that is just a short walk from the River Rib offering peaceful riverside trails. Further benefits include two allocated parking, car wash station and a communal BBQ and summer house.



 WESTWOODLEBER

 WESTWOODLEBER  
LET US GUIDE YOU HOME



TOTAL APPROX. FLOOR AREA 460 SQ.FT. (42.7 SQ.M.)

Whilst every attempt has been made to ensure the accuracy of the floor plan contained here, measurements of doors, windows, rooms and any other items are approximate and no responsibility is taken for any error, omission, or mis-statement. This plan is for illustrative purposes only and should be used as such by any prospective purchaser. The services, systems and appliances shown have not been tested and no guarantee as to their operability or efficiency can be given

Made with Metropix ©2018





WESTWOODLEBER



WESTWOODLEBER



WESTWOODLEBER



WESTWOODLEBER



WESTWOODLEBER



WESTWOODLEBER



WESTWOODLEBER



WESTWOODLEBER