



# High Street, London E15

£500,000 Leasehold









## Description

This exceptional two-bedroom apartment in River Heights Tower offers contemporary living in Stratford's dynamic Riverside development. The modern building provides sophisticated urban lifestyle with comprehensive amenities and breath-taking Olympic Park views.

The spacious living room features air conditioning and opens onto two generous balconies with direct views of the Olympic Stadium and parklands. The sleek grey high-gloss kitchen includes integrated appliances, while the master bedroom offers ensuite shower room and built-in wardrobes. The second bedroom provides balcony access, complemented by a contemporary family bathroom.

River Heights Tower provides premium amenities including 24-hour concierge service and residents gym. The building's prime Riverside development position places residents at the centre of Stratford's remarkable transformation story.

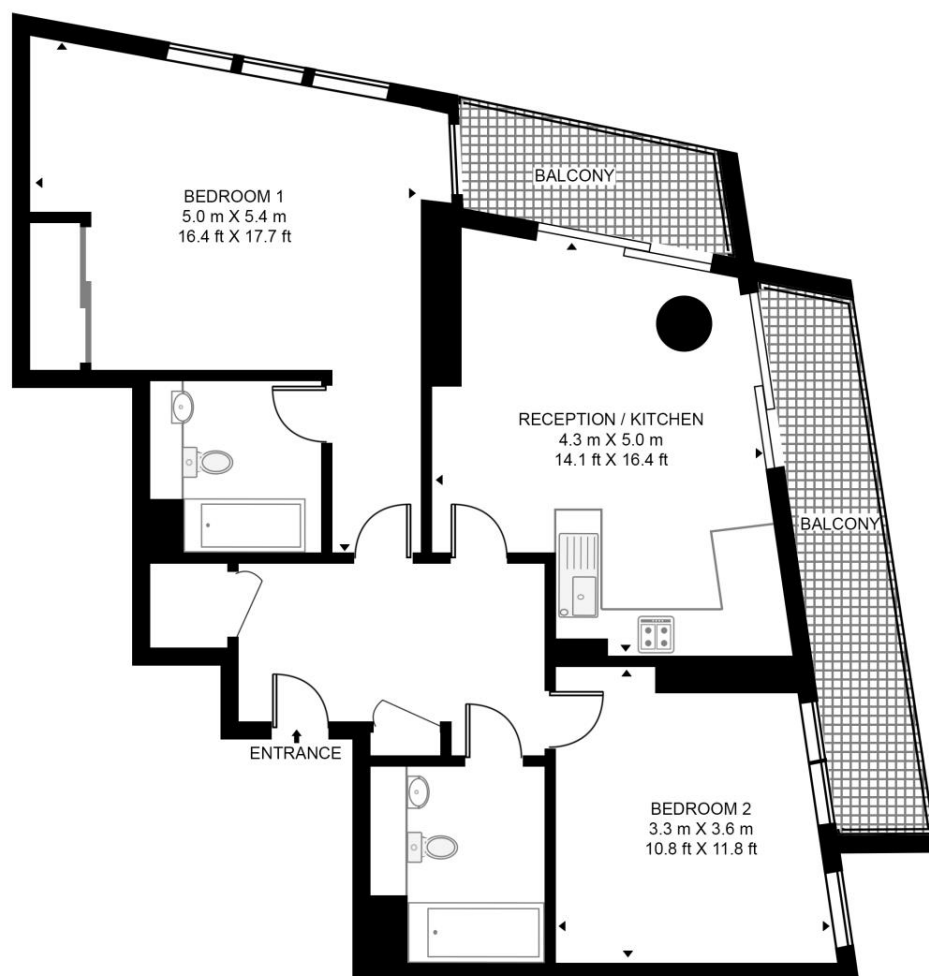
- Olympic Park views
- 24-hour concierge service
- Residents gym facilities
- Air conditioning throughout
- Two private balconies
- Ensuite master bedroom
- Integrated kitchen appliances
- Built-in wardrobes
- Within a short walk of Stratford station & Westfield Shopping Centre
- EPC Rating B

# Floorplan

756 sq ft | 70 sq m

## RIVER HEIGHTS, HIGH STREETS

APPROXIMATE GROSS INTERNAL FLOOR AREA 756 SQ.FT (70.2 SQ.M)



TWENTY THIRD FLOOR



This floor plan has been defined by the RICS Code of Measurement. This floor plan and all others are for approximate representative purposes only and upon usage is agreed to as such by the client.

WWW: [hdvirtualart.com](http://hdvirtualart.com) | TEL: 0203.974.1567 | EMAIL: [info@hdvirtualart.com](mailto:info@hdvirtualart.com)

Stratford  
5 Station Street,  
London E15 1DA  
+4420 3147 1500  
[Lettingsstratford@eu.jll.com](mailto:Lettingsstratford@eu.jll.com)

*Urban living, your way.*

[jll.co.uk/residential](http://jll.co.uk/residential)

© 2019 Jones Lang LaSalle IP, Inc. All rights reserved. All information contained herein is from sources deemed reliable; however, no representation or warranty is made to the accuracy thereof.

