



7 Rossmoor Close

Auckley, Doncaster, DN9 3JB

Asking Price £195,000

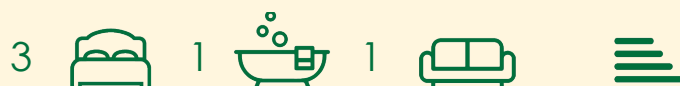
Situated in a quiet and sought-after cul-de-sac, this well-maintained three-bedroom semi-detached home occupies a larger-than-average plot. The ground floor features a bright and welcoming lounge, an open-plan kitchen/diner at the rear with patio doors leading to the garden. Upstairs, there are three generously sized bedrooms and a family bathroom. Externally, the property benefits from a large driveway, a front garden, a spacious rear garden, and a detached garage, with plenty of scope to extend, subject to planning. Homes on Rossmoor Close rarely come to market, making this a rare opportunity to acquire a family home in a sought-after location.

Located close to local amenities including shops, cafes, and highly regarded schools, excellent road and rail links, including the A1(M) and Doncaster railway station, make commuting straightforward, while the friendly community and peaceful surroundings make it a popular choice for families.

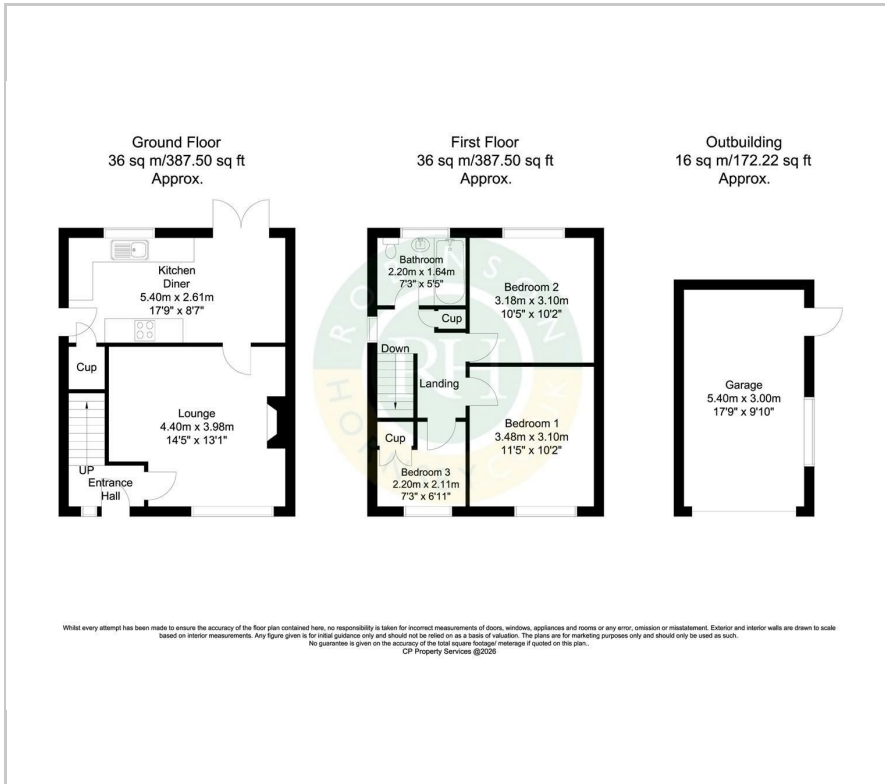
- Well-maintained three-bedroom semi-detached family home
- Situated in a quiet, highly sought-after cul-de-sac
- Larger-than-average plot offering potential for extension subject to relevant planning
- Bright and airy lounge
- Open-plan kitchen/diner with patio doors to the rear garden
- Three generously sized bedrooms and a family bathroom
- Large driveway and front garden providing off-street parking
- Detached garage offering storage or additional parking
- This property is vacant & offered with no onward chain

Viewing

Please contact our Office on 01302 751616 if you wish to arrange a viewing appointment for this property or require further information.



Floor Plan



Area Map



Energy Efficiency Graph



These particulars, whilst believed to be accurate are set out as a general outline only for guidance and do not constitute any part of an offer or contract. Intending purchasers should not rely on them as statements of representation of fact, but must satisfy themselves by inspection or otherwise as to their accuracy. No person in this firm's employment has the authority to make or give any representation or warranty in respect of the property.