



## Brook Drive, SE11

£1,495,000

 4  2  2  D

- Freehold
- Excellent Transport Links
- Garden
- Victorian House
- Central Location
- Chain Free









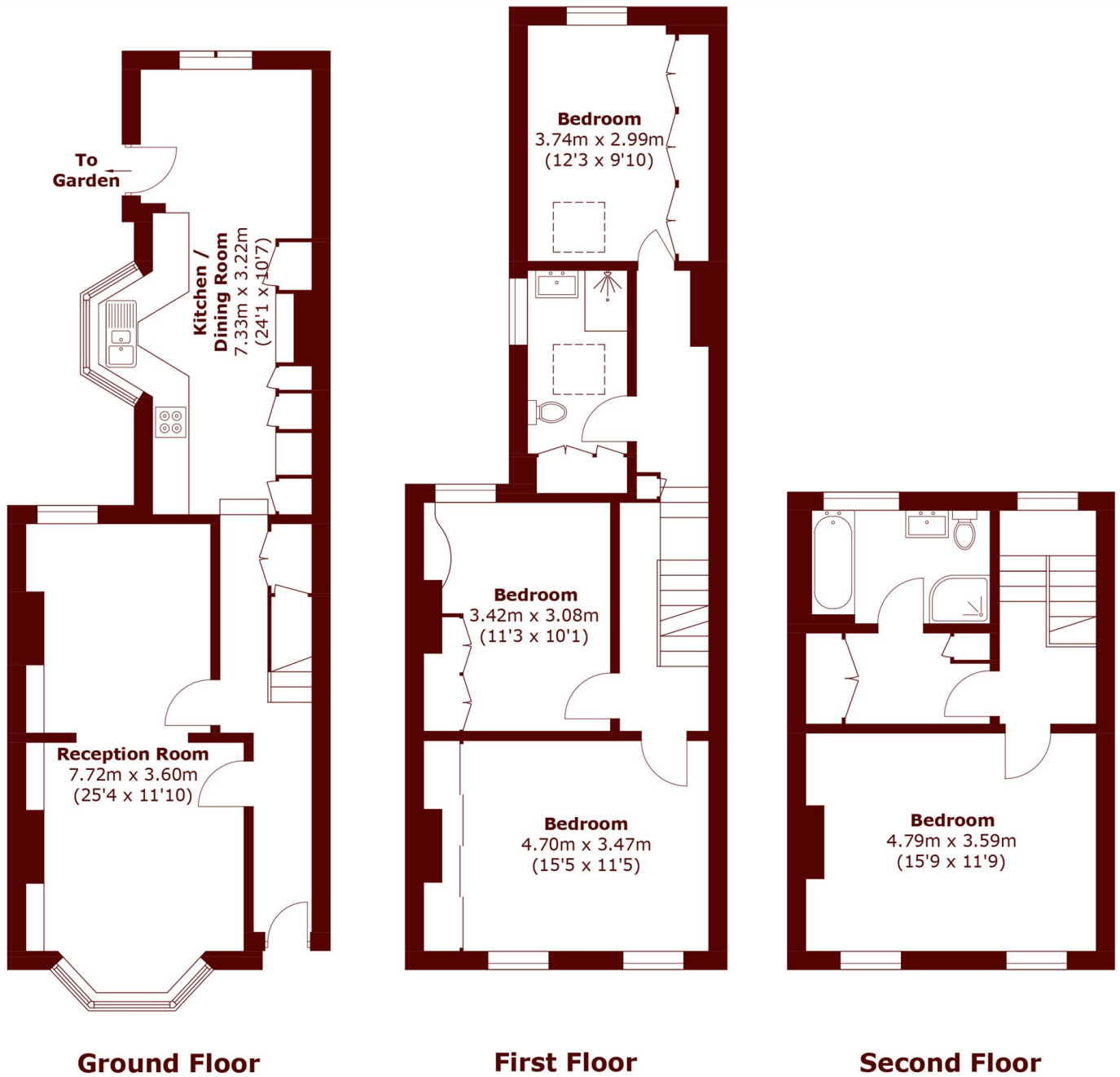
## ABOUT THE PROPERTY

This attractive four-bedroom mid-terrace home is arranged over three floors and perfectly positioned just moments from the exciting regeneration of Elephant and Castle.

The ground floor features a spacious through-reception room and a bright kitchen and dining area leading directly to a private rear garden. The first floor offers a generous bedroom accompanied by a dressing room and en-suite, while the top floor provides three further bedrooms and a modern family bathroom. With freehold tenure and set within a highly connected central location, the property offers generous accommodation and an appealing blend of comfort, space and convenience.

Located a stone's throw from the regeneration of Elephant and Castle, providing a large variety of local amenities and a short walk to the vibrant South Bank with its exciting restaurants, theatres, street entertainers and The London Eye. Both Lower Marsh and The Cut, home to the Old Vic Theatre, provide the areas rich selection of eateries and pubs. Nearby transport links include Lambeth North, Elephant & Castle & Waterloo stations offering underground and mainline connections.





Total area (approx.): 148.8 sq. m (1,601.6 sq. ft)

## Marsh & Parsons Kennington

295 Kennington Road,  
London, SE11 4QE  
020 7587 1533

We aim to make our particulars both accurate and reliable. However, they are not guaranteed; nor do they form part of an offer or contract. If you require clarification on any points then please contact us, especially if you're traveling some distance to view. Please note that appliances and heating systems have not been tested and therefore no warranties can be given as to their good working order.