



5 Albert Road, Ashted, KT21 1BJ

Price Guide £589,950

- VICTORIAN COTTAGE
- TWO RECEPTION ROOMS
- THREE BEDROOMS
- SCOPE FOR FURTHER ENHANCEMENTS
- CLOSE TO DESIRABLE SCHOOLS
- DESIRABLE LOCATION
- KITCHEN & GOOD SIZE BATHROOM
- GARDEN WITH SIDE ACCESS
- NO THROUGH ROAD
- WALKING DISTANCE OF SHOPS & STATION

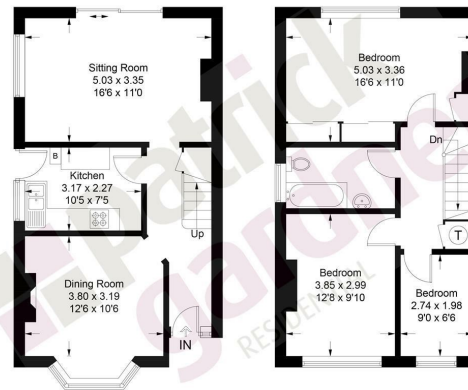
From a covered entrance the front door opens in to the hallway with understairs storage. The front reception room enjoys a bay window and central fireplace. The rear reception room enjoys a dual aspect and patio doors with views over the much loved garden.

Of the first floor landing is an airing cupboard and loft access. The principal bedroom is double in size and enjoys an array of built in wardrobes with views over the garden. Bedroom two is also a double and bedroom three a single, both over looking the front aspect and each served by a spacious family bathroom with over bath shower.

Outside. The much loved rear garden is mainly laid to lawn with mature planting and a vegetable patch for interest. There is also a handy garden shed and side access to the gated front garden.



Approximate Gross Internal Area = 93 sq m / 1001 sq ft



This plan is for layout guidance only. Not drawn to scale unless stated. Windows and door openings are approximate. Whilst every care is taken in the preparation of this plan, please check all dimensions, shapes and compass bearings before making decisions reliant upon them. (ID1236550)

Tenure
EPC
Council Tax Band

Freehold
D
D

66 Tudor House, Ashted, Surrey, KT21 1AW
Tel: 01372 271880 Email: ashted@patrickgardner.com
www.patrickgardner.com

These particulars, whilst believed to be accurate are set out as a general outline only for guidance and do not constitute any part of an offer or contract. Intending purchasers should not rely on them as statements of representation of fact, but must satisfy themselves by inspection or otherwise as to their accuracy. No person in this firms employment has the authority to make or give any representation or warranty in respect of the property.

