



## Kerrison Road, W5

£650,000

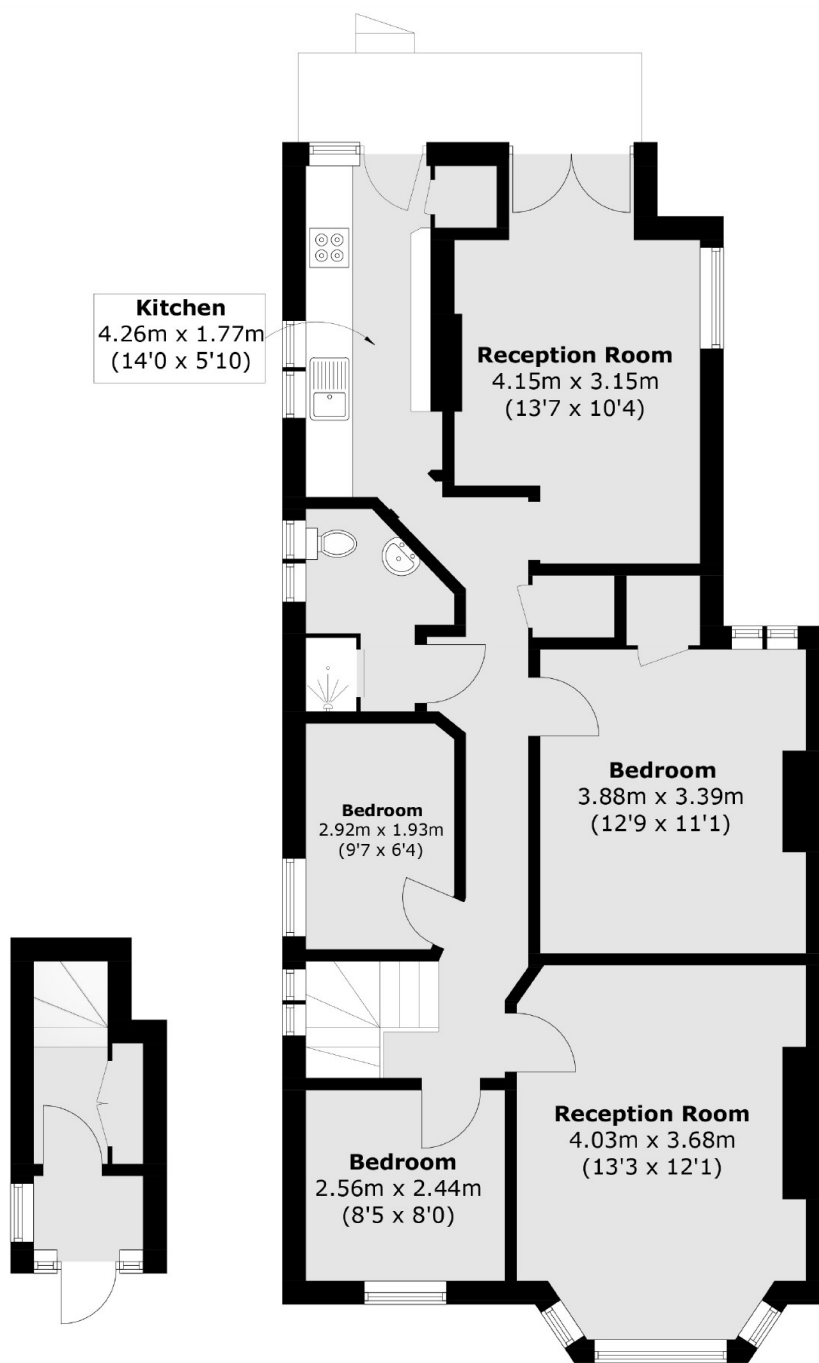
A three bedroom first floor purpose built maisonette that has been modernised by the current owners to a very high standard. There are two reception rooms with period features and direct access to a private garden at the rear.

Located approximately half a mile from Ealing Broadway tube station with Elizabeth, Central and District lines. For the Piccadilly line, South Ealing is close by. Ideally positioned for the shops, restaurants and amenities of Ealing Broadway and great local schools.

### Features

- Three Bedrooms
- Two Receptions
- First Floor Maisonette
- Private Garden
- Long Lease 175 Years
- No Onward Chain

# Kerrison Road, London, W5



**Ground Floor**

**First Floor**

Total area (approx.): 89.3 sq. m (961.1 sq. ft)