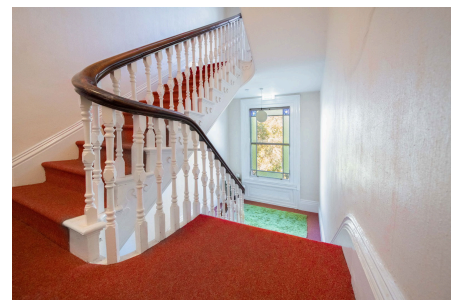


## Bidston Road, Oxton

£165,000 Council Tax Band A EPC Rating C

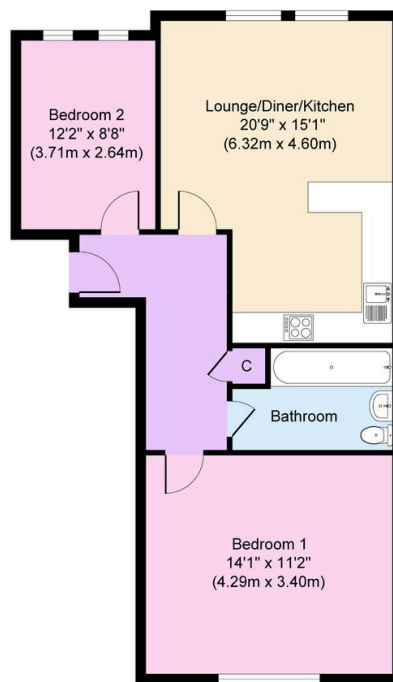
 2  1  1



Set within an impressive and commanding Victorian building with lots of original features this two bedroom first floor flat is not to be missed! Surrounded by well looked after communal gardens with mature trees providing a peaceful outlook from the large windows. A great location, well placed for commuter links and frequent public transport routes, and within walking distance to Oxton Village with its stylish eateries. Interior: hallway, open plan living room/kitchen two bedrooms and bathroom plus an attic for extra storage. Exterior: extensive communal gardens where neighbours join together over the summer months for barbecues. Parking available to the front and rear. Complete with uPVC double glazing and gas central heating system. Ready to move into, this really is a lovely place to call home.

## Key Features

- Two Bed First Floor Apartment
- High Ceilings and Large Windows
- Parking and Communal Gardens
- Council Tax Band A
- EPC Rating C
- 
- 
- 



**Approximate Floor Area**  
765 sq. ft  
(71.11 sq. m)

Copyright V360 Ltd 2025 | [www.houseviz.com](http://www.houseviz.com)