



## Leghorn Road, NW10

Freehold - £1,100,000

For sale, a unique four-bedroom mid-terrace period home spanning three floors, combining stunning original features with a creative, curated interior design.

The ground floor opens with a grand, bay-fronted reception room featuring an intricate original fireplace and decorative ceiling rose. The layout flows through sliding doors into a versatile dual-aspect study/office and continues into a bright dining room. To the rear, the kitchen features a deep butler sink and terracotta splashbacks, with French doors leading to a 31ft tranquil, mature garden and gravelled seating area.

The upper floors comprise four bedrooms. The first floor holds a large bay-fronted bedroom and two additional well-proportioned rooms. These are served by two artfully designed bathrooms, featuring eclectic styling such as a roll-top bath with gold-tone fixtures and a striking Crittall-style shower. The top floor is dedicated to a fourth generous bedroom with access to extensive eaves storage.

The property provides excellent transport links via Willesden Junction (Bakerloo Line & London Overground, Zone 2/3).



020 7328 2828

[enquiries@cameronsstiff.co.uk](mailto:enquiries@cameronsstiff.co.uk)

[cameronsstiff.co.uk](http://cameronsstiff.co.uk)







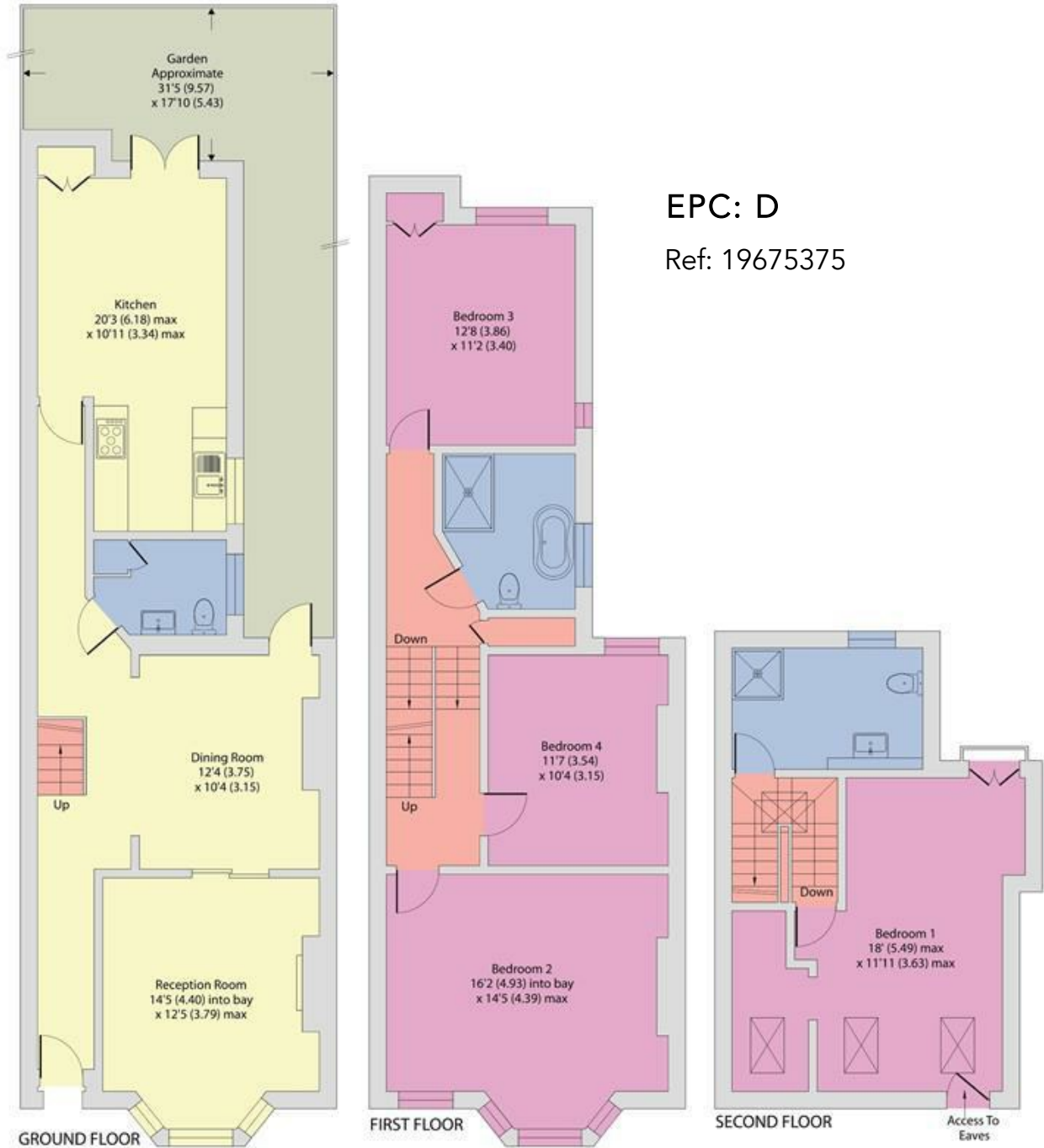
## Leghorn Road, London, NW10

Approximate Area = 1776 sq ft / 164.9 sq m

For identification only - Not to scale



Denotes restricted head height



EPC: D

Ref: 19675375



Floor plan produced in accordance with RICS Property Measurement 2nd Edition, Incorporating International Property Measurement Standards (IPMS2 Residential). © nichecom 2026. Produced for Camerons Stiff & Co. REF: 1451909

