



First Street, SW3

£1,500 Per week

A beautifully presented three bedroom period house in this quiet and convenient location just off fashionable Walton Street. The house offers natural light throughout & a contemporary finish.

Located in the heart of the Chelsea, First Street is ideally located for the boutiques and restaurants available over Walton Street while Knightsbridge, Harrods & Sloane Square station are a short walk away.

Features

- Three Bedrooms
- Two Bathrooms
- Courtyard Garden
- Kitchen & Breakfast Room
- Double Reception
- Wood Floors



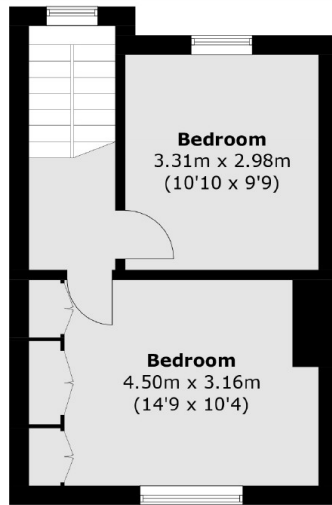
First Street, SW3

The house is entered on the raised ground floor and benefits from a double reception room with wooden floors, guest WC and access onto the courtyard garden. Heading down to the lower ground floor is a spacious open plan kitchen and dining room.

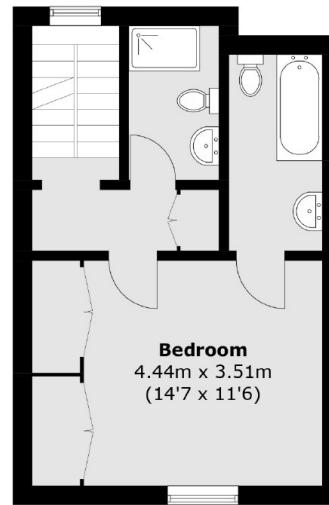
The master bedroom and en suite bathroom are located on the first floor of the house. You will also find the family shower room on this floor. Heading up to the second floor are two further double bedrooms.



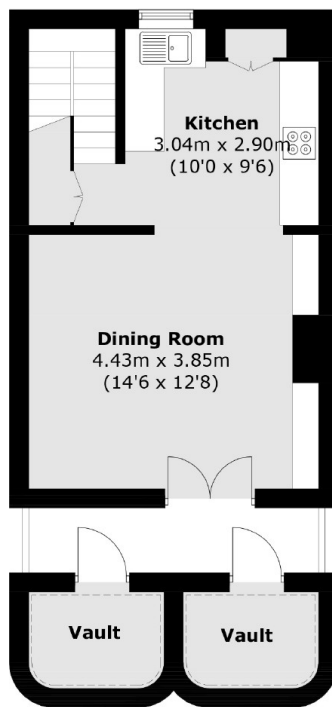
First Street, London, SW3



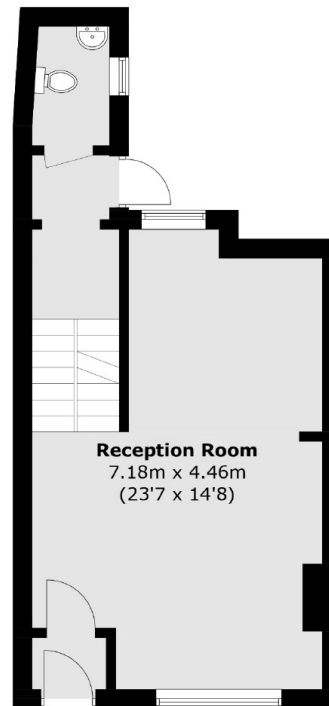
Second Floor



First Floor



Basement



Ground Floor

Total area (approx.): 129.9 sq. m (1,398.1 sq. ft)