

PULLEN

ESTATE AGENTS



161A Wellmeadow Road

London, SE6 1HP

£450,000

Beautifully Refurbished Two-Bedroom Freehold House with Approx. 42ft Rear Garden & Off-Street Parking. Offering bright and well-presented accommodation throughout, this attractive home is ideal for first-time buyers, downsizers or investors.

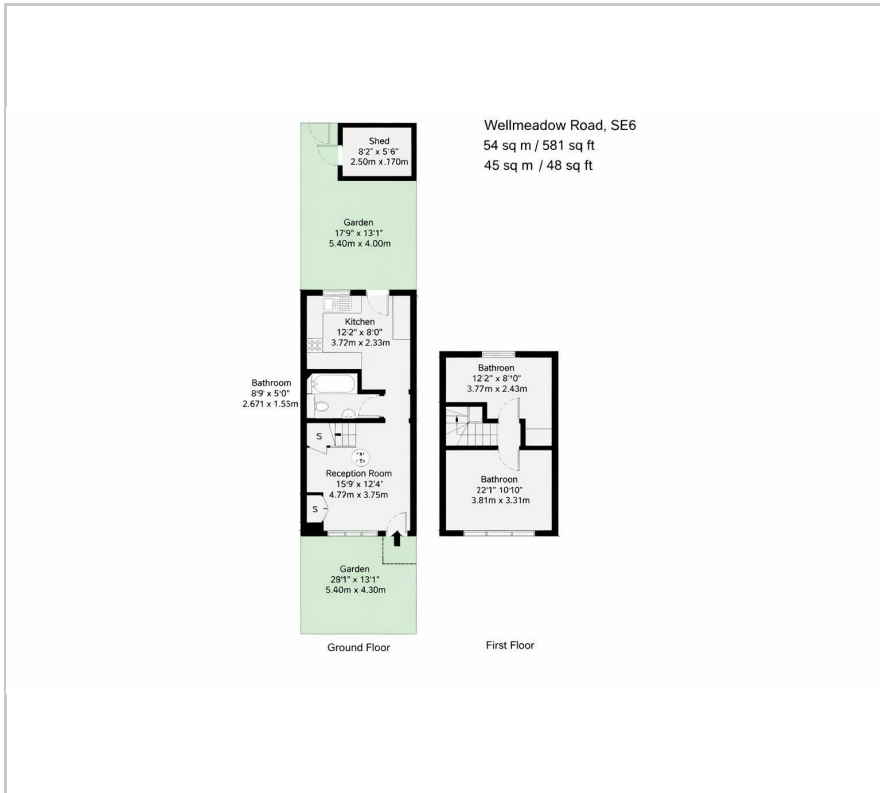
- Two generously sized bedrooms
- Fitted kitchen with garden access
- Approx. 42ft private rear garden
- Off-street parking

Viewing

Please contact our Chislehurst Office on 02034899589 if you wish to arrange a viewing appointment for this property or require further information.



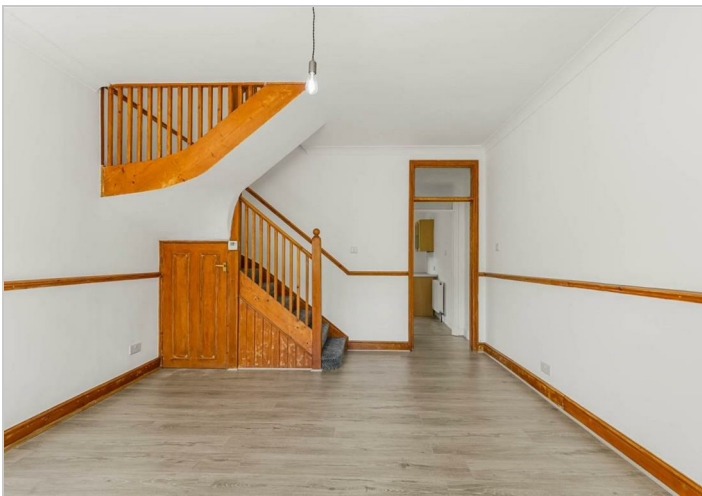
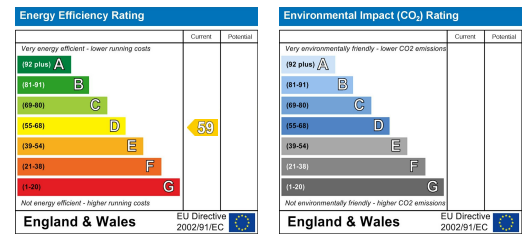
Floor Plan



Area Map



Energy Efficiency Graph



These particulars, whilst believed to be accurate are set out as a general outline only for guidance and do not constitute any part of an offer or contract. Intending purchasers should not rely on them as statements of representation of fact, but must satisfy themselves by inspection or otherwise as to their accuracy. No person in this firm's employment has the authority to make or give any representation or warranty in respect of the property.