

CHESTERFIELD HILL

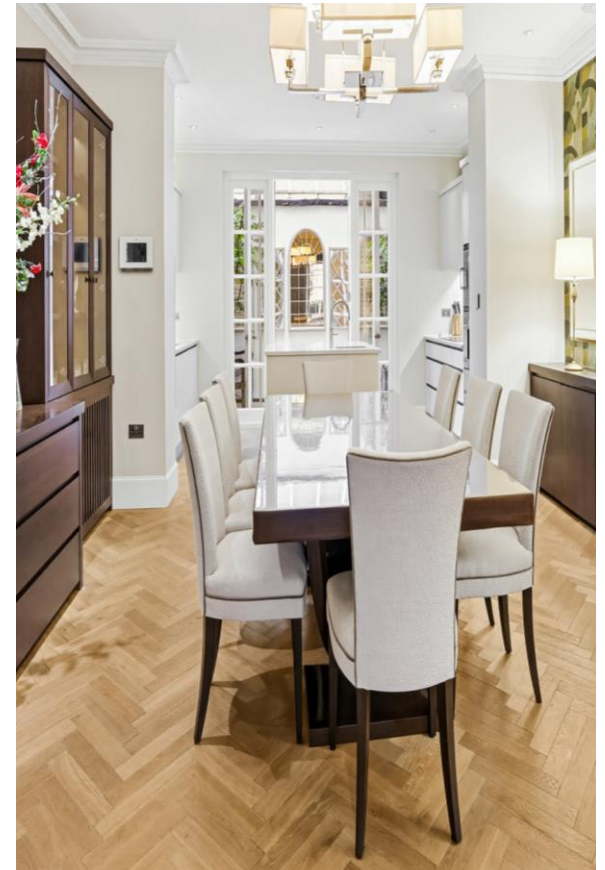
LONDON W1J

CHESTERTONS

CHESTERFIELD HILL

A recently refurbished six bedroom house over seven floors with lift access and air conditioning, finished to a high specification. The property has two private outside areas and is located in prime Mayfair.

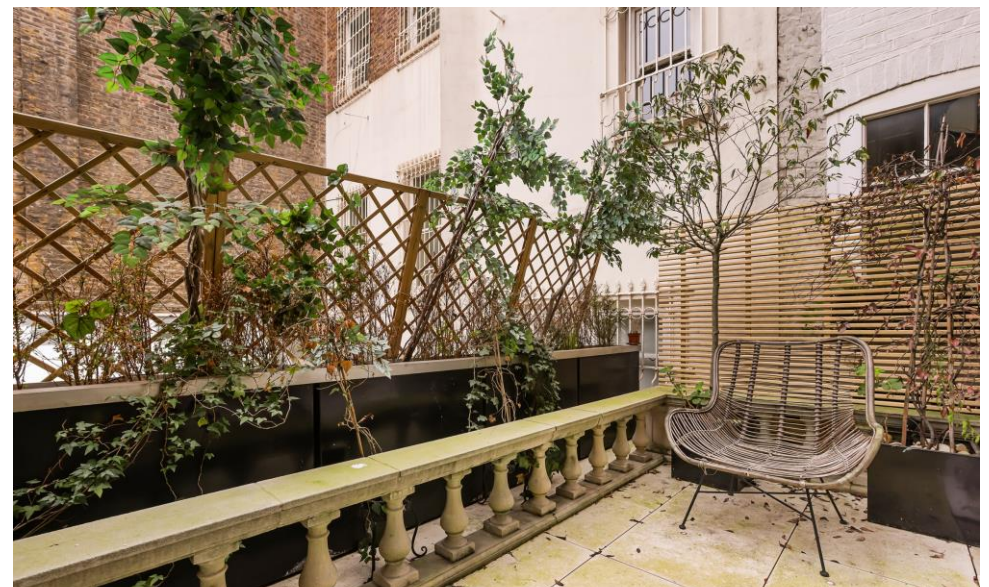




Specifications

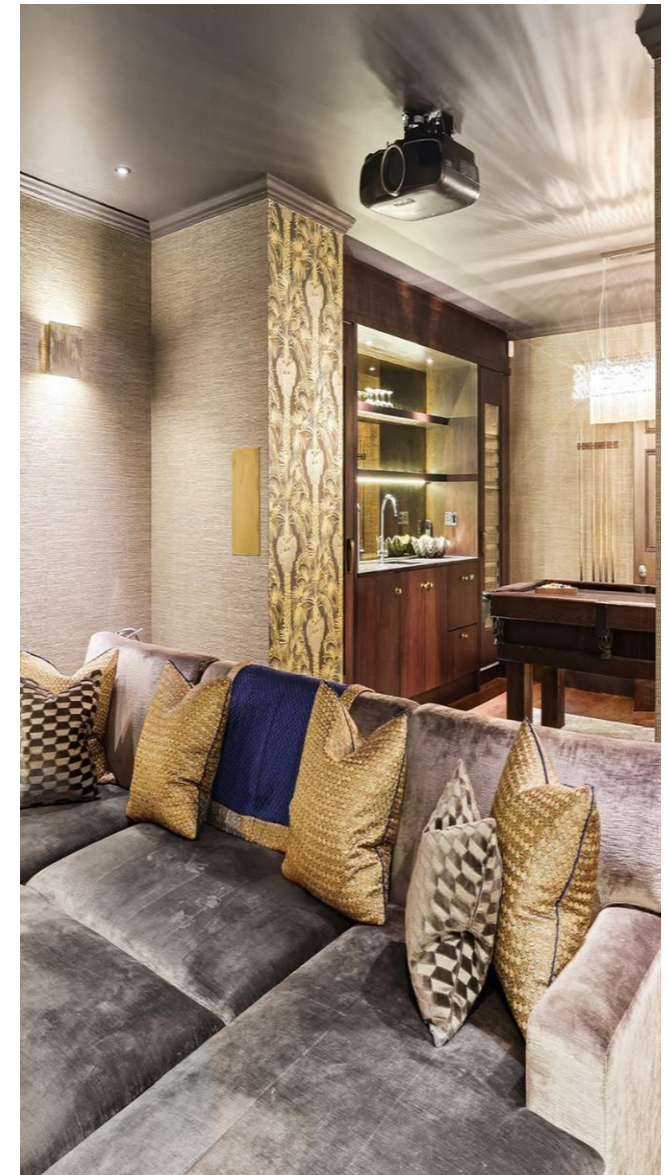
- Lift
- Air conditioning
- Furnished
- Modern
- Two private patios
- Cinema room



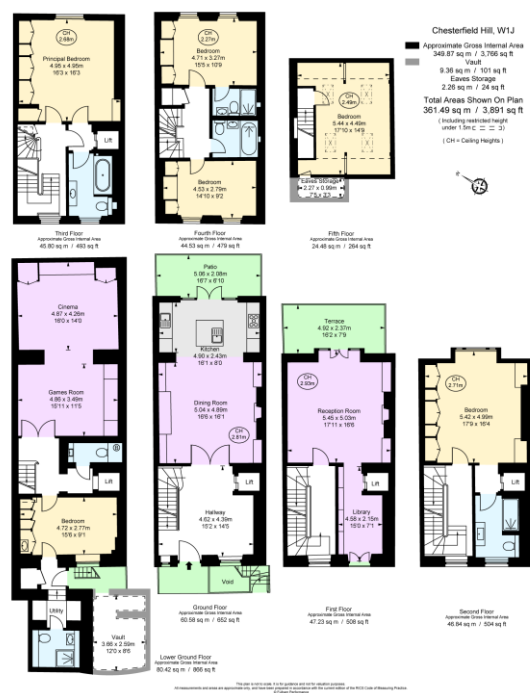








Price: £29,900.00 | EPC: D



Chesterfield Hill, W1J

Approximate gross Internal area
367.9 sq m / £7.55/Sq.Ft. p/m

This plan is for layout guidance only. Not drawn to scale unless stated. Windows and door openings approximate. Whilst every care is taken in the preparation of this plan, please check all dimensions, shapes and compass bearings before making decisions reliant upon them.

A recently refurbished six bedroom house over seven floors with lift access and air conditioning, finished to a high specification. The property has two private outside areas and is located in prime Mayfair.

The impressive entrance hall leads through to a spacious open-plan kitchen/dining room with Gaggenau appliances, bespoke cabinetry, a fireplace and its own private patio, providing fabulous entertaining space.

The stunning first floor reception room opens out onto a private terrace, and also leads into the library/study with beautiful cabinetry.

There are four bedrooms on the upper floors, three of which are en suite, and all include built in wardrobes and wonderful natural light. There is a further bathroom and an additional top floor bedroom/studio featuring exposed wooden beams.

The lower ground floor comprises a sumptuous media and games room complete with a bar and guest cloak room, and a further self-contained bedroom, bathroom and utility room.

Chesterfield Hill is renowned for its elegant period architecture and quiet, tree-lined charm. Moments from Berkeley Square and Green Park, it offers refined living surrounded by London's finest boutiques, restaurants, and private clubs a rare blend of heritage and luxury in one of the city's most prestigious locations.



Chestertons Mayfair Lettings
47 South Audley Street
Mayfair, London, W1K

020 7288 8301
mayfairlettingsusers@chestertons.co.uk
chestertons.co.uk

Chesterton Global Ltd trading as Chestertons for themselves and for the vendor of this property whose agents they are, give notice that (i) these particulars do not constitute any part of an offer or contract, (ii) all statements contained within these particulars are made without responsibility on the part of Chestertons or the vendor, (iii) whilst made in good faith, none of the statements contained within these particulars are to be relied upon as a statement or representation of fact, (iv) any intending purchasers must satisfy themselves by inspection or otherwise as to the correctness of each of the statements contained within these particulars, (v) the vendor does not make or give either Chestertons or any person in their employment any authority to make or give representation or warranty whatsoever in relation to this property. Wide angle lenses may be used. ©Copyright Chestertons | Chesterton Global Ltd | Registered Office 40 Connaught Street, Hyde Park, London W2 2AB Registered Company Number 05334580.

