

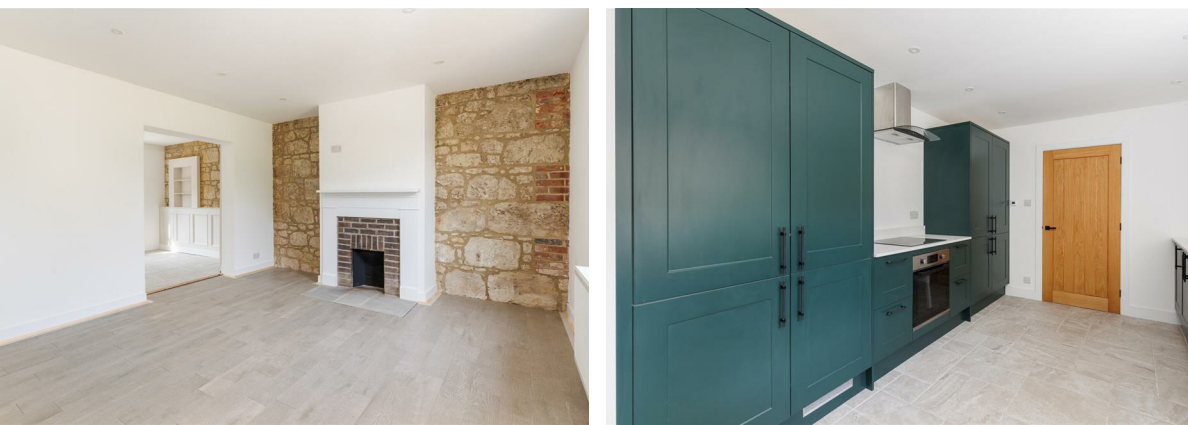
Oakdene Main Road, Chillerton, Newport, PO30 3ER

Asking Price £485,000

EPC Rating: C Council Tax Band: D

**ELLIOTT
LINCOLN**
ESTATE AGENTS & ASSOCIATES

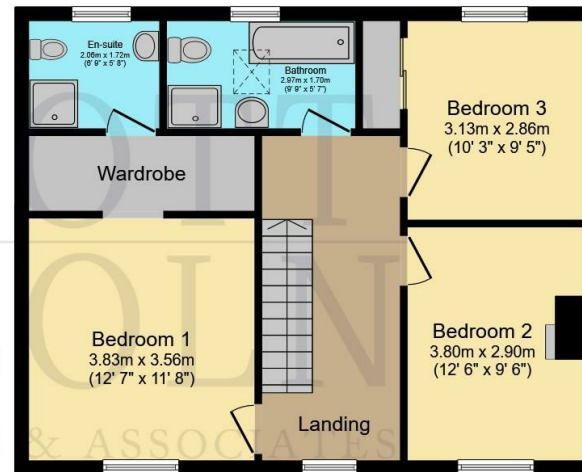
Reassuringly familiar, refreshingly new



Tucked away in the heart of picturesque Chillerton, Oakdene is a beautifully renovated semi-detached home that perfectly blends period charm with stylish modern living. Offering generous, versatile accommodation, countryside views from every window, and easy access to village life, schools, walks and Newport's amenities, this is a home that feels wonderfully rural yet brilliantly connected.

Call or WhatsApp: 01983 642622
office@elliottlincoln.co.uk
www.elliottlincoln.co.uk

Oakdene, Main Road, Newport, PO30 3ER



Total floor area: 120.1 sq.m. (1,292 sq.ft.)

This floor plan is for illustrative purposes only. It is not drawn to scale. Any measurements, floor areas (including any total floor area), openings and orientations are approximate. No details are guaranteed, they cannot be relied upon for any purpose and do not form any part of any agreement. No liability is taken for any error, omission or misstatement. A party must rely upon its own inspection(s). Powered by www.Propertybox.io

Energy Efficiency Rating		Current	Potential
Very energy efficient - lower running costs			
(92 plus)	A		
(81-91)	B		
(69-80)	C	72	76
(55-68)	D		
(39-54)	E		
(21-38)	F		
(1-20)	G		
Not energy efficient - higher running costs			
England & Wales		EU Directive 2002/91/EC	