



Highfold Cottage, Darley

£575,000



**YOUR AWARD
WINNING AGENT**

#DARINGTOBEDIFFERENT



A three bedroom detached village home, occupying a delightful position within the highly regarded Nidderdale village of Darley and enjoying superb views over the surrounding countryside. The property stands within a generous and attractive plot and has a garage and now offers buyers an excellent opportunity to update and modernise the accommodation to suit their own requirements.

Darley is a desirable village within the Nidderdale Area of Outstanding Natural Beauty, well served by local amenities and surrounded by beautiful countryside.

OUTSIDE

A shared driveway leads to the property where electric gates open onto a generous private driveway providing ample off-road parking and access to a large integral garage.

The property occupies a generous plot with a large front garden laid mainly to lawn together with additional rear garden areas, planted borders and parking space.

Council Tax band: G

Tenure: Freehold

EPC Energy Efficiency Rating: D



GROUND FLOOR

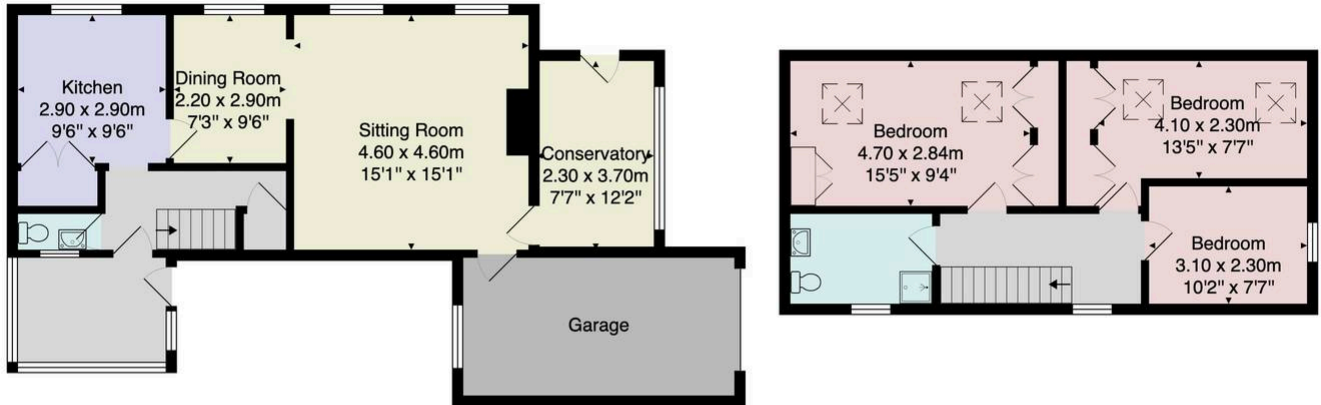
On the ground floor there is a large reception room providing both sitting and dining areas, featuring an attractive fireplace with woodburning stove and enjoying delightful views over the surrounding countryside.

There is also a kitchen fitted with a range of units and appliances together with a conservatory extension providing additional living space overlooking the garden. There is a downstairs WC and fitted storage.

FIRST FLOOR

On the first floor there are three good sized bedrooms together with a modern shower room.





Total Area: 103.3 m² ... 1112 ft² (excluding garage)

All measurements are approximate and for display purposes only.

No liability is accepted by either the agency or Box Property Solutions Ltd as to the exact measurements of the rooms.
Box Property Solutions Ltd retains the copyright on this plan and allows agents to use it with agreed permission.

