



Yeoman Close, Ipswich, IP1 2QE

welcome to

Yeoman Close, Ipswich

This well-presented, 1st floor apartment benefits from one bedroom, an open plan kitchen/lounge, with access to the balcony, one allocated parking space and NO ONWARD CHAIN!

Entrance Hall

Carpet flooring, one storage radiator, an airing cupboard and an entry phone system.

Kitchen/Lounge

Open plan kitchen/lounge with carpet flooring to the lounge area, double glazed window to the front, double glazed doors to the balcony, TV point, one storage cupboard, tiled effect flooring to the kitchen area, eye and base level units in wood effect with granite effect worktop surfaces, space for a washing machine and fridge/freezer, an integrated oven with electric hob and extractor hood, a stainless steel one and a half bowl sink plus drainer and chrome mixer tap.

Balcony

Decked flooring and a mesh balustrade.

Bedroom

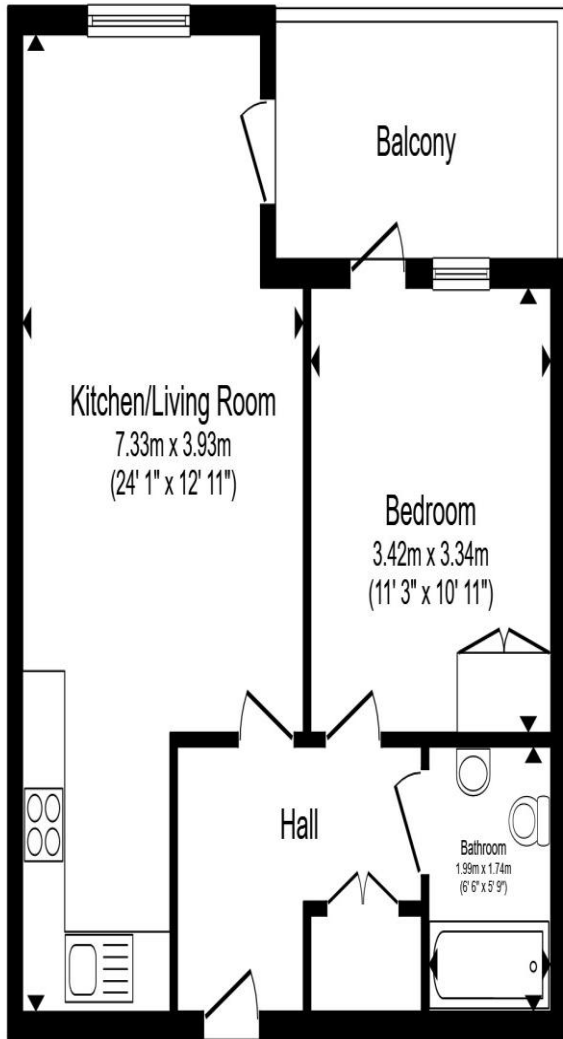
Carpet flooring, one storage radiator, TV point, a built in wardrobe, double glazed window to the front and a door to the balcony.

Bathroom

Tiled effect flooring, low level WC, wash hand basin, one storage radiator, partially tiled walls, shaver point and a bath with overhead shower and glass screen.

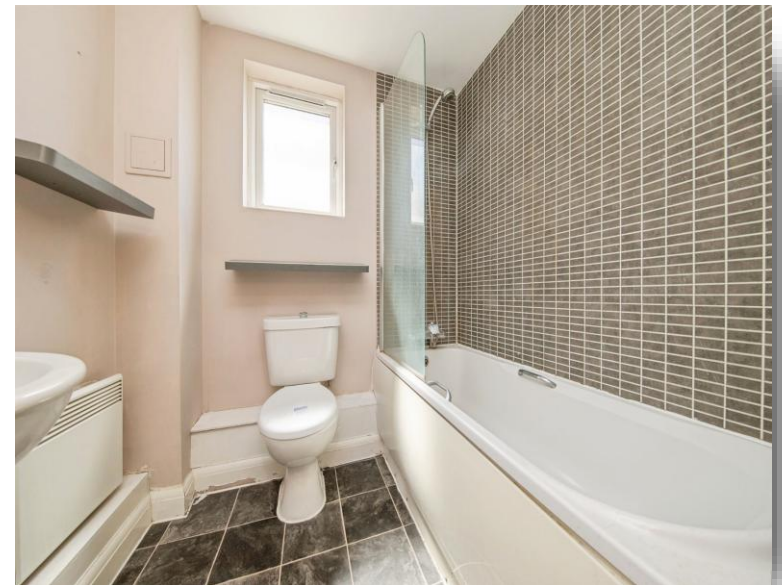
Parking

One allocated parking space.



Total floor area 47.3 m² (509 sq.ft.) approx

This floor plan is for illustrative purposes only. It is not drawn to scale. Any measurements, floor areas (including any total floor area), openings and orientation are approximate. No details are guaranteed, they cannot be relied upon for any purpose and they do not form part of any agreement. No liability is taken for any error, omission or misstatement. A party must rely upon its own inspection(s). Powered by www.propertybox.io



welcome to
Yeoman Close,
Ipswich

- No onward chain
- One bedroom
- Open plan kitchen/lounge
- Balcony
- One allocated parking space

Tenure: Leasehold EPC Rating: C

Council Tax Band: A Service Charge: Ask Agent

Ground Rent: Ask Agent

This is a Leasehold property. We are awaiting further details about the Term of the lease. For further information please contact the branch. Please note additional fees could be incurred for items such as Leasehold packs.

£75,000



view this property online williamhbrown.co.uk/Property/IPS121541



Property Ref:
IPS121541 - 0002

1. MONEY LAUNDERING REGULATIONS Intending purchasers will be asked to produce identification documentation at a later stage and we would ask for your co-operation in order that there is no delay in agreeing the sale. 2. These particulars do not constitute part or all of an offer or contract. 3. The measurements indicated are supplied for guidance only and as such must be considered incorrect. Potential buyers are advised to recheck measurements before committing to any expense. 4. We have not tested any apparatus, equipment, fixtures or services and it is in the buyers interest to check the working condition of any appliances. 5. Where an EPC, or a Home Report (Scotland only) is held for this property, it is available for inspection at the branch by appointment. If you require a printed version of a Home Report, you will need to pay a reasonable production charge reflecting printing and other costs. 6. We are not able to offer an opinion either written or verbal on the content of these reports and this must be obtained from your legal representative. 7. Whilst we take care in preparing these reports, a buyer should ensure that his/her legal representative confirms as soon as possible all matters relating to title including the extent and boundaries of the property and other important matters before exchange of contracts.

William H Brown is a trading name of Sequence (UK) Limited which is registered in England and Wales under company number 4268443, Registered Office is Cumbria House, 16-20 Hockliffe Street, Leighton Buzzard, Bedfordshire, LU7 1GN. VAT Registration Number is 500 2481 05.



william h brown



01473 226101



ipswich@williamhbrown.co.uk



16-18 Wolsey House, Princes Street, IPSWICH,
Suffolk, IP1 1QT



williamhbrown.co.uk