

## Mile End Road, E1

£2,250 Per calendar month

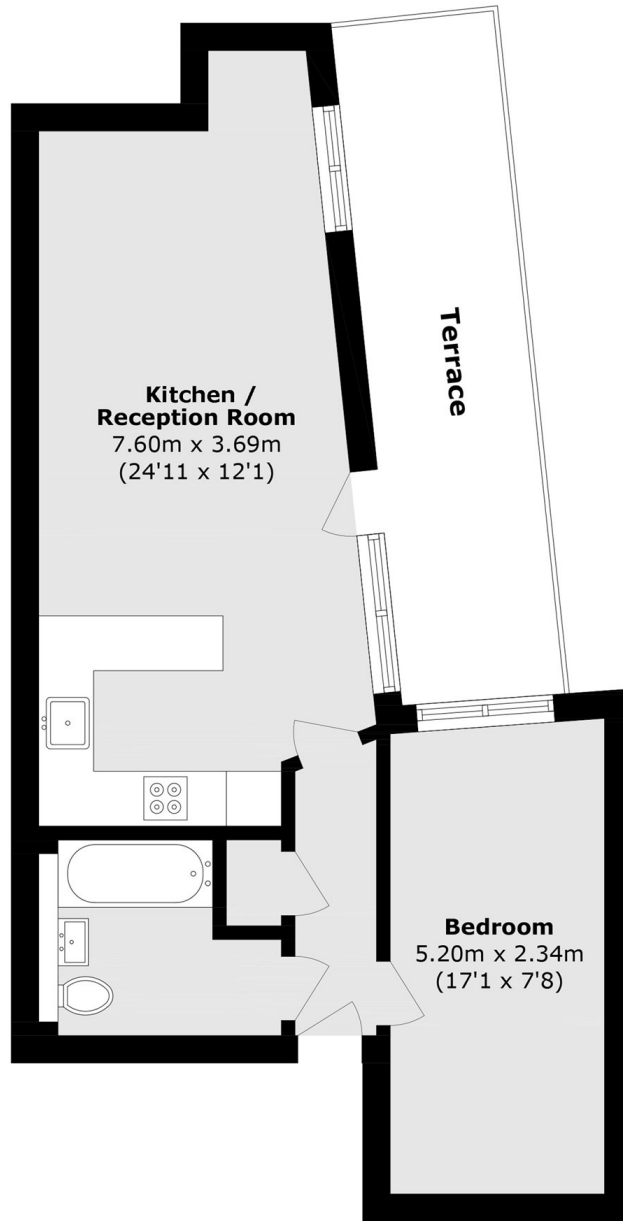
A smart and stylish new build apartment that will be perfect for city professionals. The flat exudes the feeling of modern living tenants desire, with wood flooring throughout and high end integrated appliances provided.

Crownage House is a modern development next to Stepney Green Station. The local area is filled with culture and charm. The future tenants will not be short of location to eat out at.

### Features

- One Double Bedroom
- Furnished
- Wood Flooring
- Bike Storage
- Private Terrace
- Dishwasher

# Mile End Road, London, E1



Total area (approx.): 47.7 sq. m (513.4 sq. ft)  
Terrace total (approx.): 13.7 sq. m (147.4 sq. ft)