



## Green Park, £230,000

- Bright reception room with garden view
- Modern kitchen with dishwasher
- Abundant natural light throughout
- Highly sought-after location
- Close local schools
- EPC Rating: D



3 1 1



## About the property

Presenting a well-appointed three-bedroom semi-detached house, offered for sale in a highly sought-after location. This neutrally decorated home is ideal for both families and investors, combining comfortable living spaces with a superb setting that benefits from excellent public transport links, renowned nearby schools, local amenities, and scenic parks just a short stroll away.

The property features a spacious reception room, characterised by large windows that allow an abundance of natural light to flood the space and present delightful views across the garden—perfect for relaxing or entertaining guests. The modern kitchen is thoughtfully designed with ample natural light, practical work top, and the added convenience of a built-in dishwasher, catering to all your culinary needs.

Upstairs, the accommodation comprises two generous double bedrooms, providing flexible space for restful retreats or home working, and one well-proportioned single bedroom—ideal for a child's room, nursery, or study. Completing the layout, the property benefits from a well-appointed bathroom.

Practicality is further enhanced by the inclusion of dedicated parking, ensuring convenience and peace of mind for homeowners and guests alike.

Situated in a desirable residential area with easy access to everyday essentials and leisure opportunities, this home promises the perfect blend of comfort and location.



## Accommodation

### Living Room

11' 8" x 14' 4" ( 3.56m x 4.37m )

### Kitchen

14' 8" x 11' 8" ( 4.47m x 3.56m )

### Bedroom 1

8' 9" x 14' 4" ( 2.67m x 4.37m )

### Bedroom 2

3' 7" x 9' 8" ( 1.09m x 2.95m )

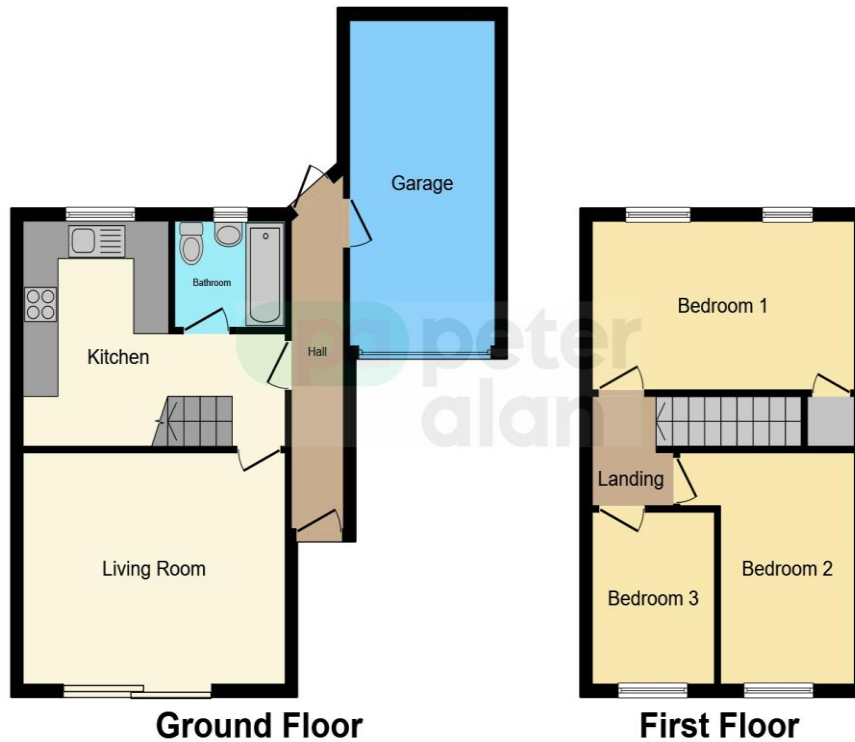
### Bedroom 3

9' 2" x 6' 9" ( 2.79m x 2.06m )

01443 222851

talbotgreen@peteralan.co.uk

## Floorplan



This floor plan is for illustrative purposes only. It is not drawn to scale. Any measurements, floor areas (including any total floor area), openings and orientation are approximate. No details are guaranteed, they cannot be relied upon for any purpose and they do not form part of any agreement. No liability is taken for any error, omission or misstatement. A party must rely upon its own inspection(s). Powered by [www.focalagent.com](http://www.focalagent.com)

## Important Information

Note while we endeavour to make our sales details accurate and reliable, if there is any point which is of particular interest to you, please contact the office and we will be pleased to confirm the position for you. We have not personally tested any apparatus, equipment, fixtures, fittings or services and cannot verify they are in working order or fit for their purposes. Nothing in these particulars is intended to indicate that carpets or curtains, furnishings or fittings, electrical goods (whether wired or not). Gas fires or light fittings or any other fixtures not expressly included form part of the property offered for sale. This computer generated Floorplan, if applicable, is intended as a general guide to the layout and design of the property. It is not to scale and should not be relied upon for dimensions. Tenure: We cannot confirm the tenure of the property as we have not had access to the legal documents. The buyer is advised to obtain verification from their solicitor or surveyor.

Peter Alan Limited is registered in England and Wales under company number 2073153, Registered Office is Cumbria House, 16-20 Hockliffe Street, Leighton Buzzard, Bedfordshire, LU7 1GN. VAT Registration Number is 500 2481 05. For activities relating to regulated mortgages and non-investment insurance contracts, Peter Alan Limited is an appointed representative of Connells Limited which is authorised and regulated by the Financial Conduct Authority. Connells Limited's Financial Services Register number is 302221. Most buy-to-let

