



## Brondesbury Road, NW6

£675,000

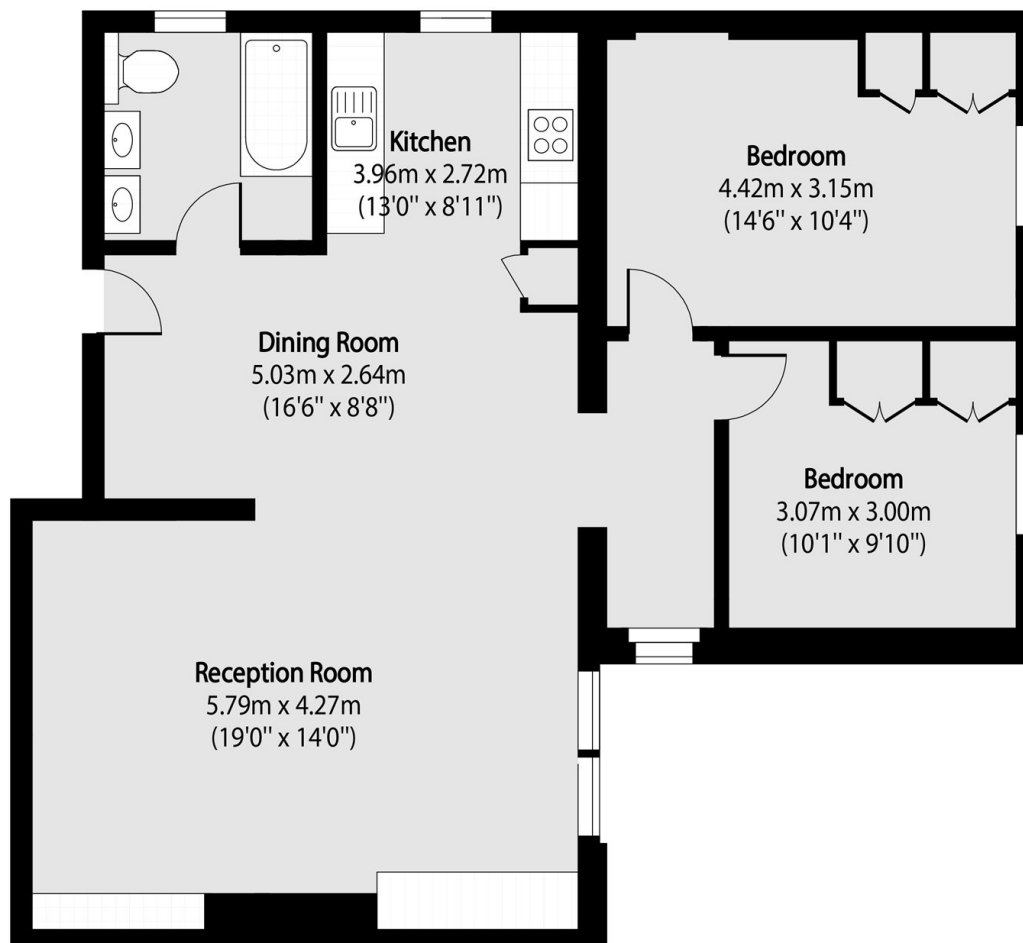
Situated on the first floor of a red brick period conversion, this two bedroom flat features a bright and airy reception room with easy-maintenance resin flooring, a fully integrated kitchen, and a contemporary three piece bathroom.

Located at the Queen's Park end of Brondesbury Road, the property is close to Queen's Park station (Bakerloo line and London Overground) providing easy access to Euston. The popular amenities of Salusbury Road are also nearby, with an excellent selection of cafés, bars, restaurants, and independent shops.

### Features

- Two Bedrooms
- First Floor Flat
- Great Condition
- Off Street Parking
- Close to Queen's Park
- Chain Free

# Brondesbury Road, London, NW6



Total area (approx): 80.63 sq m (868 sq. ft)