



## OXBERRY AVENUE, SW6

£2,250,000

- Four double bedrooms
- Three bathrooms
- South-west facing garden
- Roof terrace
- Near Bishops Park
- Freehold

@marshandparsons  
marshandparsons.co.uk

MARSH &  
PARSONS



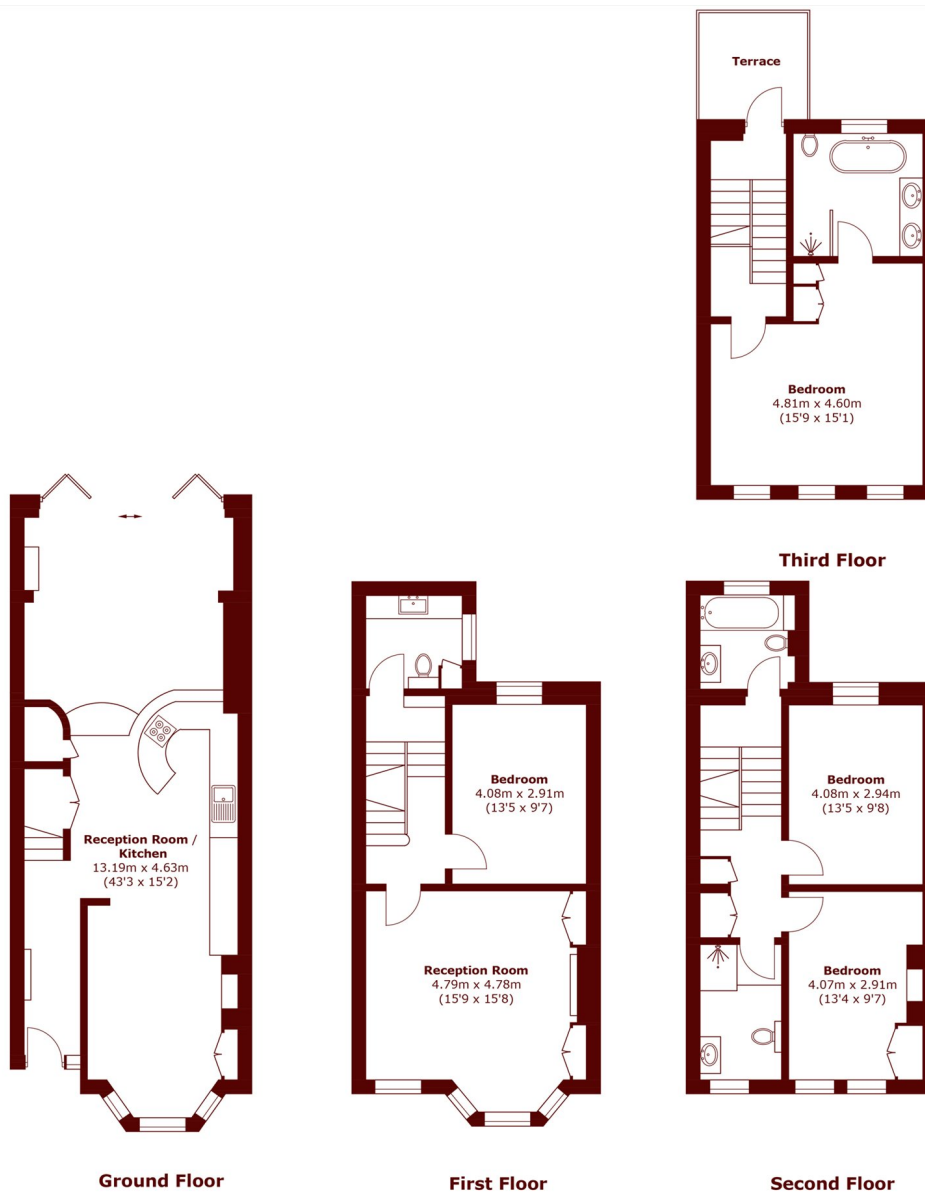
# ABOUT THE PROPERTY

Set on a highly desirable residential street just moments from Bishops Park and the River Thames, this rarely available and fully extended freehold house offers beautifully balanced living space, elegant design, and an abundance of natural light throughout.

Ideally located within walking distance of Parsons Green and Putney Bridge Underground stations (both on the District Line), the property also enjoys close proximity to the shops, cafés, and restaurants of Parsons Green.



# STEP INSIDE OXBERRY AVENUE



Total area (approx.): 183.2 sq. m (1971.9 sq. ft)  
Terrace : 5.4 sq. m (58.1 sq. ft)

**Bishops Park**  
020 7993 9888

Energy Rating: D We aim to make our particulars both accurate and reliable. However, they are not guaranteed; nor do they form part of an offer or contract. If you require clarification on any points then please contact us, especially if you're traveling some distance to view. Please note that appliances and heating systems have not been tested and therefore no warranties can be given as to their good working order

**MARSH &  
PARSONS**