

Sheen Court, TW10

£499,950

Set within the ever popular Sheen Court development is this spacious mansion block apartment. The property comprises two bedrooms, a modern bathroom and separate WC, a separate kitchen and a large reception room.

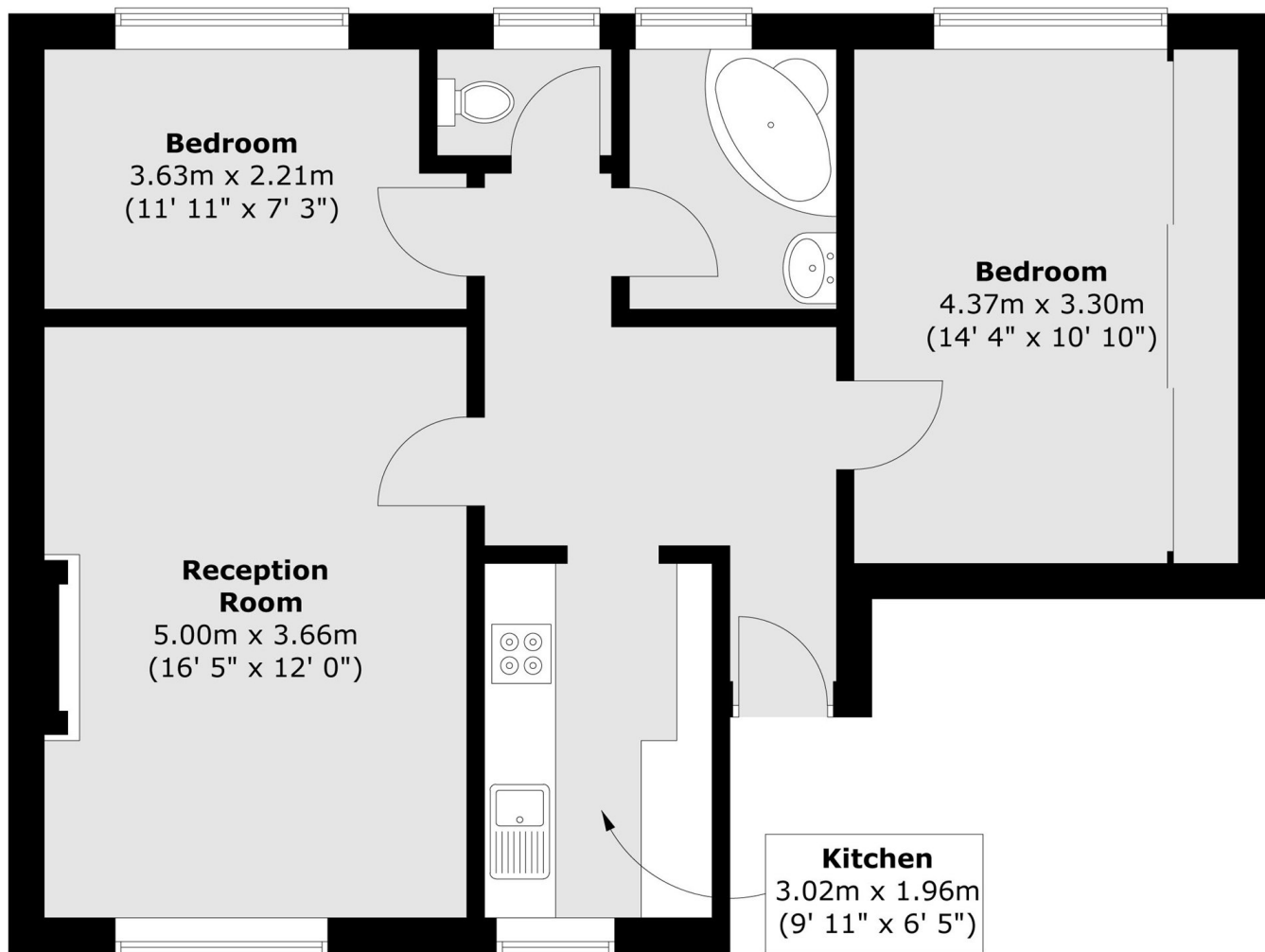
The property is offered to the market with a Share of Freehold, residents parking, low service charge costs, and no onward chain.

Sheen Court is a well maintained private sought after residential development set within extensive communal grounds. Richmond and North Sheen stations offer tube or rail services into Central London via the District Line, South West Trains and London Overground.

Features

- Two Bedrooms
- Modern Kitchen
- Modern Bathroom
- Residents Parking
- Share Of Freehold
- No Onward Chain

Sheen Court, Richmond, TW10



Total area (approx.) : 64.1 sq. m (690 sq. ft)