



Price

£575,000

Freehold

3x  1x  2x 

**Cheyne Walk, Horley,
Surrey, RH6**

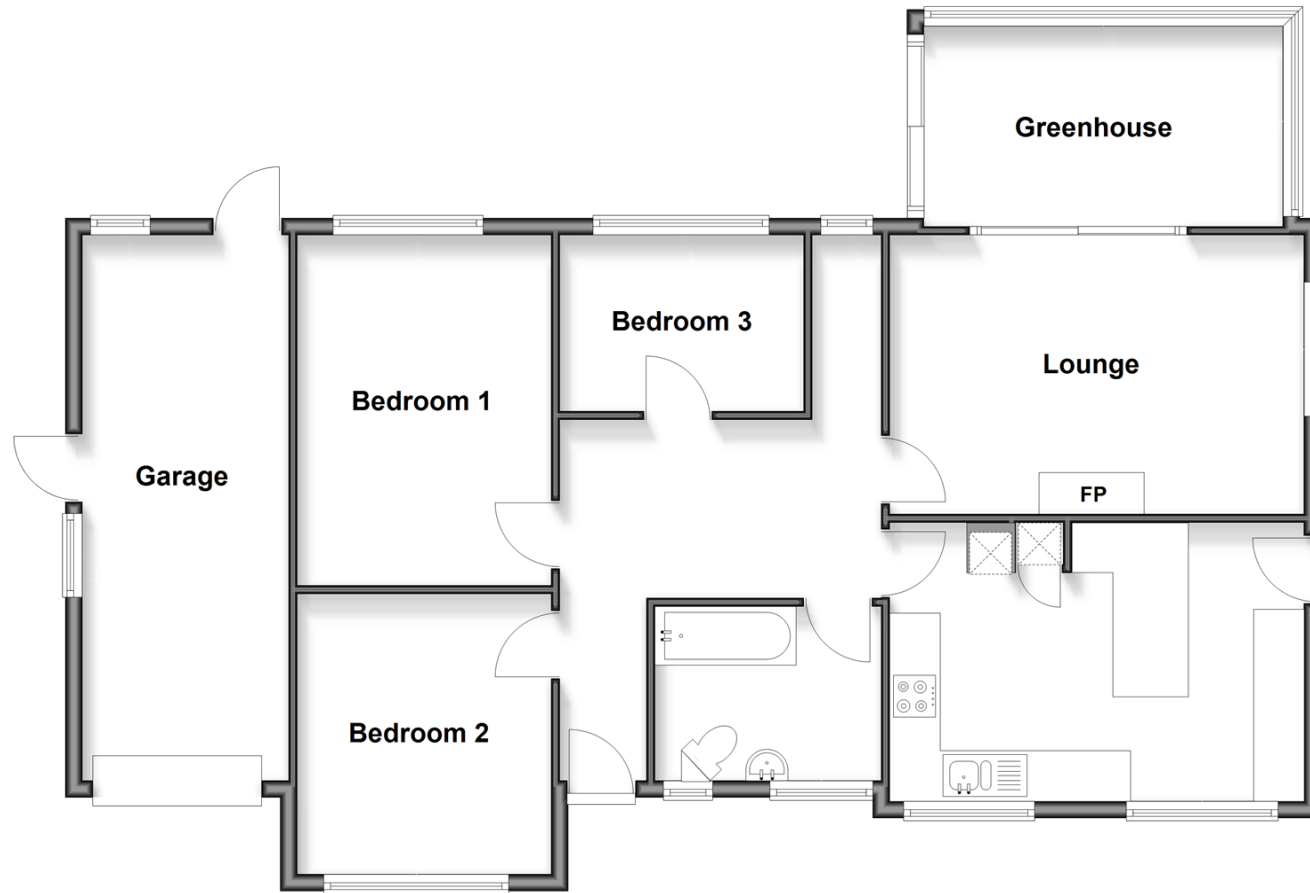
OVER 60?

Secure this property
for up to **59% less!**

cubitt&west
Helping you move forwards

Ground Floor

Approx. 109.9 sq. metres (1183.0 sq. feet)



Accommodation

GROUND FLOOR

Entrance Hallway

Kitchen: 16'1 x 10'9 (4.91m x 3.28m)

Lounge: 16'2 x 8'0 (4.93m x 2.44m)

Bathroom: 8'8 x 6'6 (2.64m x 1.98m)

Bedroom 1: 11'0 x 9'8 (3.36m x 2.95m)

Bedroom 2: 13'8 x 9'9 (4.17m x 2.97m)

Bedroom 3: 9'5 x 6'9 (2.87m x 2.06m)

OUTSIDE

Garage

Greenhouse



Main features

- Chain free
- Off road parking and garage
- Short walk to train station, local shops and schools
- 10% development clause
- Spacious kitchen with breakfast bar



Nearest Schools

Primary Schools: Manorfield Primary and Nursery School 0.4 miles, Yattendon School 0.5 miles, Meath Green Junior School 1.1 miles

Secondary Schools: Oakwood School 0.4 miles



Transport Information

Train Stations: Horley 0.1 miles, Gatwick Airport 0.8 miles, Salfords 2.3 miles



Address

Cheyne Walk, Horley, Surrey, RH6



Directions

For directions to this property please contact us.



cubitt&west
Helping you move forwards

Call Horley Branch 01293 785338 ■ cubittandwest.co.uk



■ Legal advice should be taken to verify fixtures/fittings, planning, alterations and/or lease details ■ Appliances & services are untested, dimensions are approximate and floor plans are not to scale
■ Through a Homewise Home For Life Plan people aged 60+ can secure this property for up to 50% less, by purchasing a Lifetime Lease.



20811244/20251119/TP/CB