



Price

£650,000

Freehold

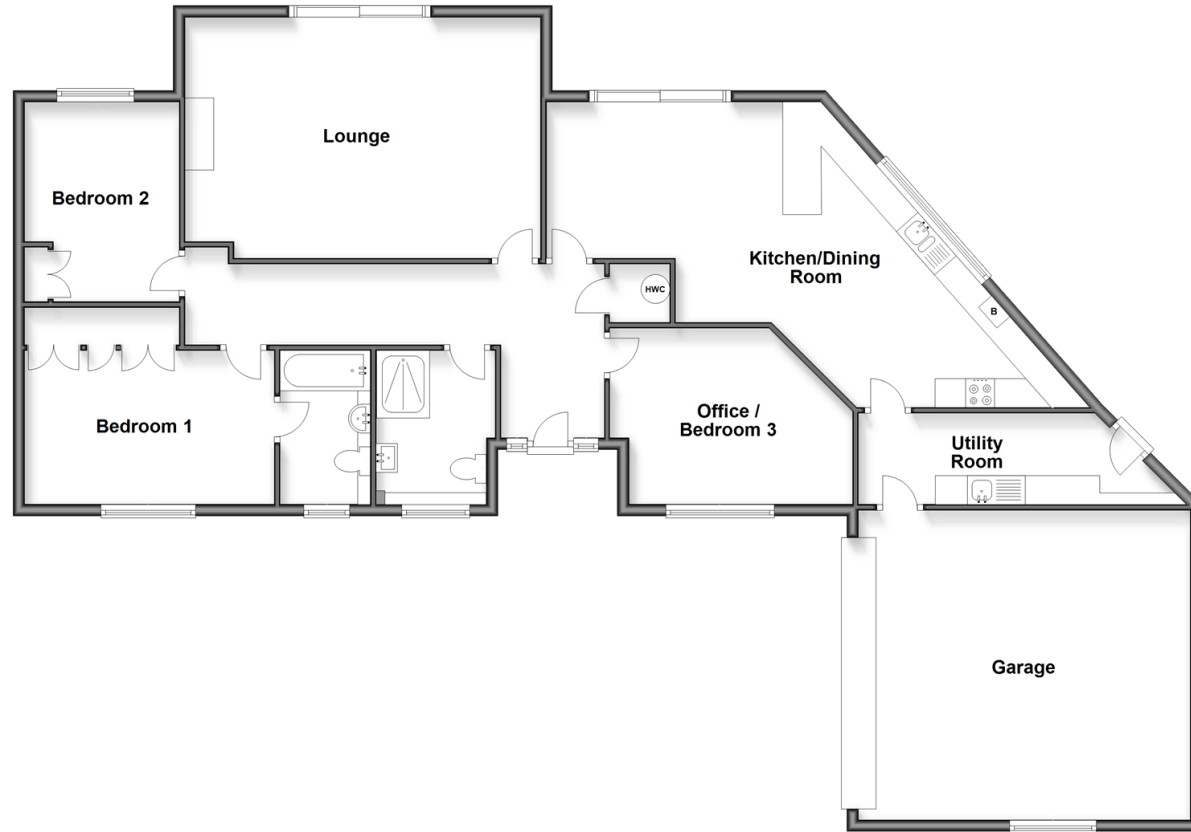
3x  2x  2x 

Worthing Road, Southwater, Horsham,
West Sussex, RH13

cubitt & west
Helping you move forwards

Ground Floor

Approx. 155.1 sq. metres (1669.9 sq. feet)



Accommodation

GROUND FLOOR

Hallway

Kitchen/Dining Room: (L-shaped) 12'6 x 12'1 (3.81m x 3.69m) plus 9'9 x 18'11 (2.97m x 5.77m)

Utility Room: 15'5 x 5'1 (4.70m x 1.55m)

Lounge: 20'1 x 13'6 (6.13m x 4.12m)

Shower Room: 8'9 x 6'4 (2.67m x 1.93m)

Bedroom 1: 14'3 x 8'11 (4.35m x 2.72m)

En-suite: 8'8 x 5'0 (2.64m x 1.53m)

Bedroom 2: 11'6 x 8'9 (3.51m x 2.67m)

Office/Bedroom 3: 13'0 at widest point x 10'6 (3.97m x 3.20m) plus 9'0 x 10'6 at narrowest point (2.75m x 3.20m)

OUTSIDE

Double Garage

Driveway

Wrap Around Garden



Main features

- Beautiful detached bungalow
- Double garage and driveway for at least 4 cars
- Useful en-suite to main bedroom
- Sunny and manageable garden
- On a bus route and close to Southwater Country Park

Nearest Schools

Primary Schools: Southwater Junior Academy 1.1 miles, Castlewood Primary 1.3 miles, Arunside School, Horsham 3.1 miles

Secondary Schools: Muntham House School 4.0 miles,

Transport Information

Train Stations: Horsham 4.7 miles, Christs Hospital 4.9 miles, Warnham 5.3 miles

Address

Worthing Road, Southwater, Horsham, West Sussex, RH13

Directions

For directions to this property please contact us.



cubitt&west
Helping you move forwards

Call Southwater Branch 01403 731901 ■ cubittandwest.co.uk



■ Legal advice should be taken to verify fixtures/fittings, planning, alterations and/or lease details ■ Appliances & services are untested, dimensions are approximate and floor plans are not to scale



21909393/20251216/CR/DA