



KINGS PARADE, NW10

£495,000

Two Double Bedrooms
First Floor Flat
Light & Spacious
Modern Spec
Share Of Freehold
Chain-Free

@marshandparsons
marshandparsons.co.uk

MARSH &
PARSONS



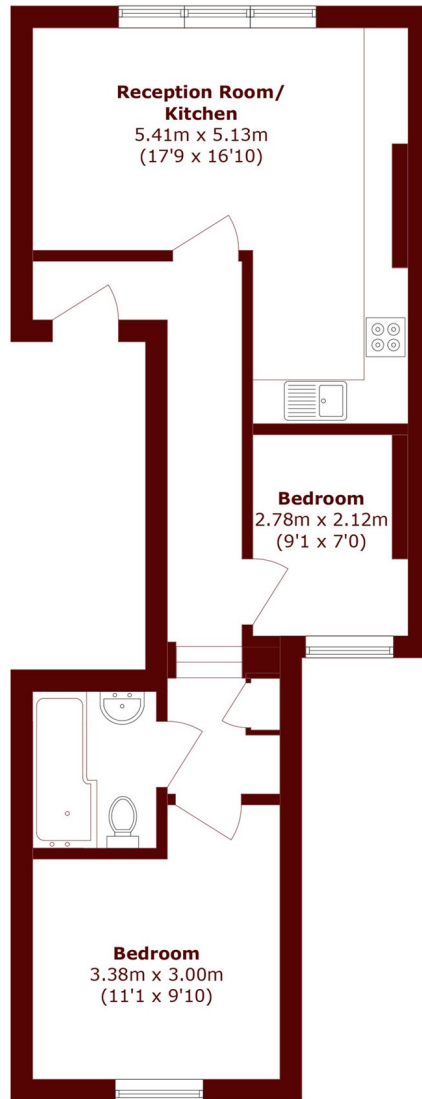
ABOUT THE PROPERTY

A light and spacious two double first floor flat with a modern spec throughout. There is a south facing open plan kitchen and reception room to the front of the property, a share in the freehold is being offered, and the property is chain-free.

Okehampton Road is positioned close to the green open space's of Queen's Park, and within easy reach of a variety shops, cafés and restaurants on College Road and Chamberlayne Road. Transport links include Kensal Rise (Overground) and Kensal Green (Bakerloo & Overground).



STEP INSIDE KINGS PARADE



Total area (approx.): 53.7 sq. m (578.0 sq. ft)

Queen's Park
020 7624 4513

Energy Rating: D We aim to make our particulars both accurate and reliable. However, they are not guaranteed; nor do they form part of an offer or contract. If you require clarification on any points then please contact us, especially if you're traveling some distance to view. Please note that appliances and heating systems have not been tested and therefore no warranties can be given as to their good working order

MARSH &
PARSONS