

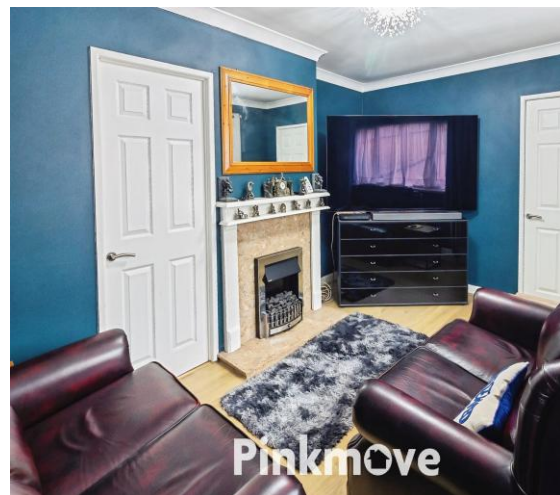


Pinkmove

Melbourne Court

Guide price £190,000 - £195,000

- Guide Price £190,000 to £195,000
- Three-bedroom family home
- Modern family bathroom on the upper floor
- Open-plan kitchen
- Convenient downstairs WC
- Single garage with rear access
- EPC Rating: C



Pinkmove



Pinkmove

01633 746088
team@pinkmove.co.uk



About the property

Located in the residential area of Melbourne Court, Cwmbran, this well-presented three-bedroom home offers a perfect blend of comfort and practicality for families or first-time buyers.

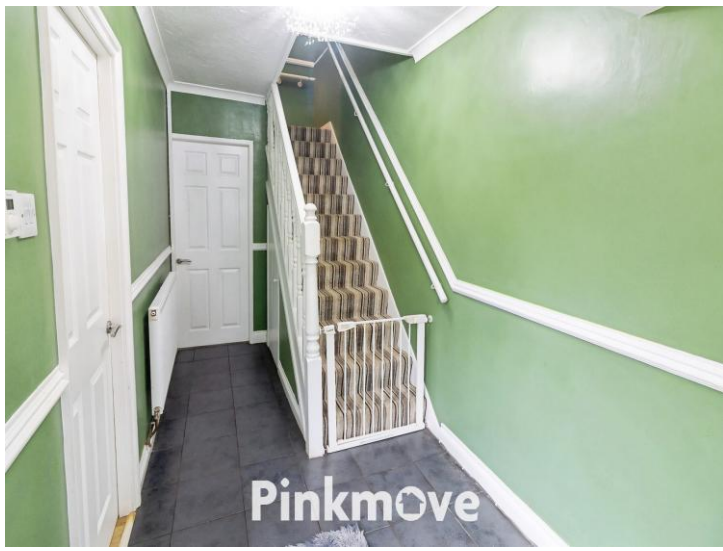
The property features two spacious double bedrooms and a single bedroom, all served by a modern family bathroom on the upper floor.

Downstairs, the home boasts two reception rooms positioned to the left of the entrance, ideal for both entertaining and relaxing. To the rear, an open-plan kitchen and utility area provides a functional and stylish space, complemented by a convenient downstairs WC.

The rear garden is thoughtfully designed with a split-level layout, featuring a decked area at house level that leads down to a large shed built beneath, with a bin storage area tucked behind. A single garage is also accessible from the rear, offering secure parking or additional storage. At the front, an enclosed patio garden adds further outdoor space and privacy.

Families will appreciate the proximity to several schools including Ysgol Gymraeg Cwmbran, Blenheim Road Community Primary School, and Our Lady of the Angels R.C School, all within a half-mile radius. Transport links are also highly convenient, with Cwmbran railway station located less than a mile away and the M4 close by. Local shops and Cwmbran Town Centre offer all your shopping needs putting the property in a well connected area for everyday life.





Accommodation

Living Room

10' 4" x 14' 6" (3.15m x 4.42m)
Max Measurements

Dining Room/Study

11' 7" x 8' 11" (3.53m x 2.72m)

Kitchen

9' 4" x 11' 7" (2.84m x 3.53m)

Utility Area

13' 3" x 8' 7" (4.04m x 2.62m)

Downstairs Wc

6' 6" x 2' 10" (1.98m x 0.86m)

Bedroom 1

11' 3" x 11' 11" (3.43m x 3.63m)

Bedroom 2

9' 3" x 12' 2" (2.82m x 3.71m)

Bedroom 3

11' 3" x 8' 6" (3.43m x 2.59m)
Max Measurements

Bathroom

5' 5" x 8' 5" (1.65m x 2.57m)

Floorplan



Important Information

Note while we endeavour to make our sales details accurate and reliable, if there is any point which is of particular interest to you, please contact the office and we will be pleased to confirm the position for you. We have not personally tested any apparatus, equipment, fixtures, fittings or services and cannot verify they are in working order or fit for their purposes. Nothing in these particulars is intended to indicate that carpets or curtains, furnishings or fittings, electrical goods (whether wired or not). Gas fires or light fittings or any other fixtures not expressly included form part of the property offered for sale. This computer generated Floorplan, if applicable, is intended as a general guide to the layout and design of the property. It is not to scale and should not be relied upon for dimensions. Tenure: We cannot confirm the tenure of the property as we have not had access to the legal documents. The buyer is advised to obtain verification from their solicitor or surveyor.

Peter Alan Limited is registered in England and Wales under company number 2073153, Registered Office is Cumbria House, 16-20 Hockliffe Street, Leighton Buzzard, Bedfordshire, LU7 1GN. VAT Registration Number is 500 2481 05. For activities relating to regulated mortgages and non-investment insurance contracts, Peter Alan Limited is an appointed representative of Connells Limited which is authorised and regulated by the Financial Conduct Authority. Connells Limited's Financial Services Register number is 302221. Most buy-to-let