



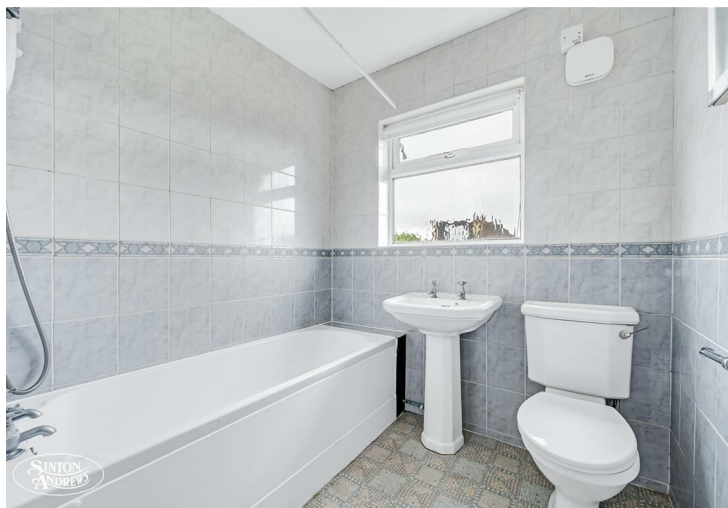
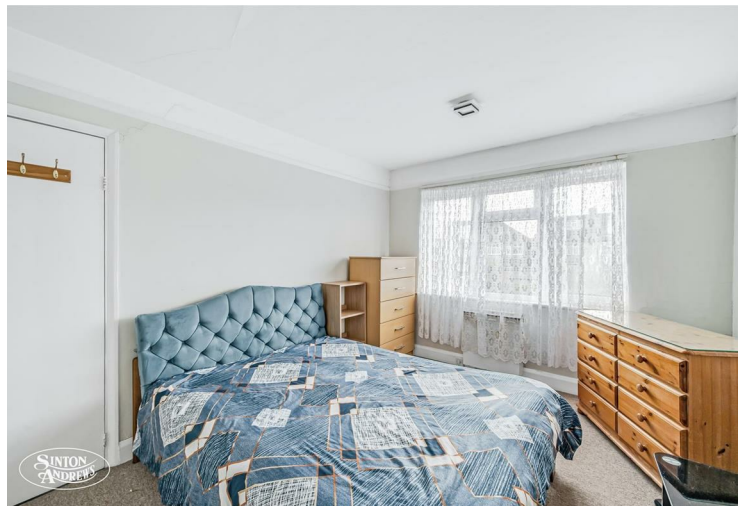
**Leasehold / Maisonette**

**Midhurst Road**

**£460,000**

This two-bedroom top-floor maisonette is situated in the heart of Northfields and benefits from the added advantage of a garage.

- Long lease
- Separate garage
- Large reception room
- Two double bedrooms
- Own private entrance



**Leasehold / Maisonette**

**Midhurst Road, W13 9TP**

**£460,000**

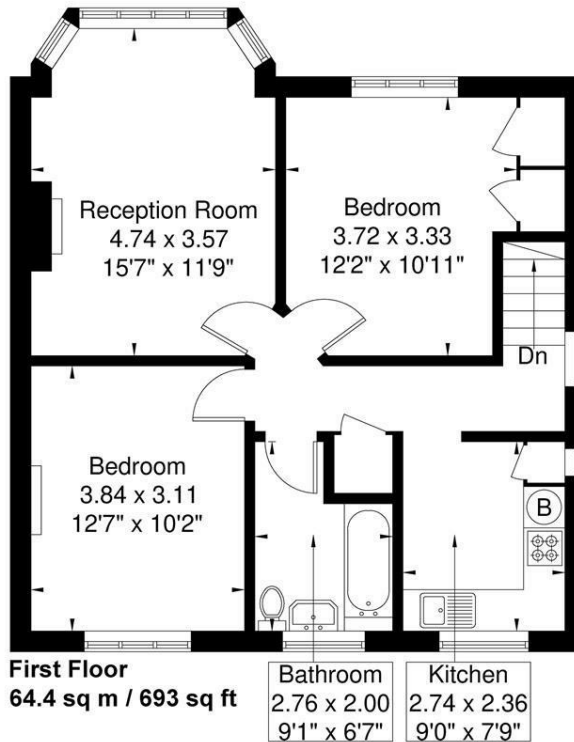
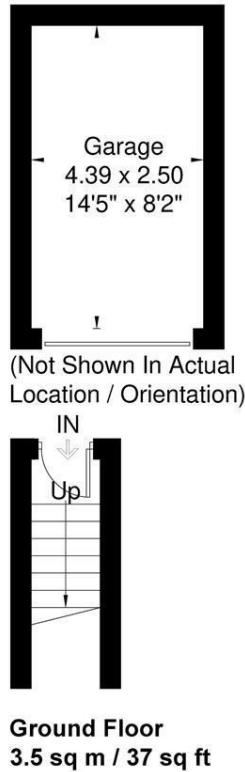
This well-proportioned first-floor property comprises a bright and airy reception room, two double bedrooms, a separate kitchen, and a modern bathroom.

Midhurst Road is perfectly positioned off Northfield Avenue, which offers a vast array of local shops and amenities. The parks and open green spaces, plus the excellent transport links including Northfields Piccadilly Line tube station. Highly regarded local schools including Fielding Primary School and Elthorne High School, all make this an extremely desirable area for families and professionals alike.



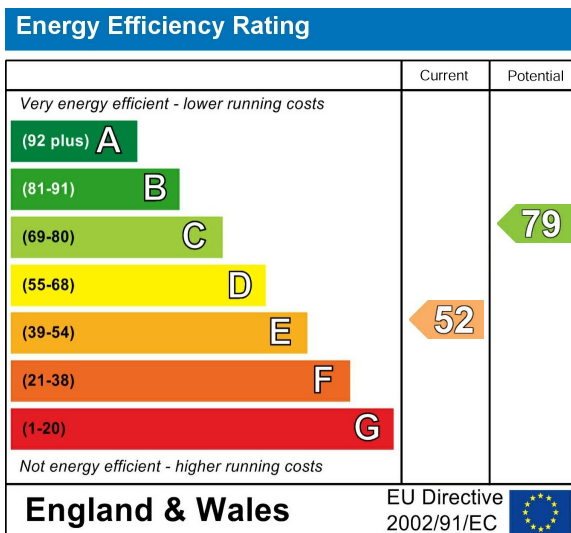
### Midhurst Road

Approximate Gross Internal Area = 67.9 sq m / 730 sq ft  
 Garage = 11.4 sq m / 122 sq ft  
 Total = 79.3 sq m / 852 sq ft



Although every attempt has been made to ensure accuracy, all measurements are approximate. The floorplan is for illustrative purposes only and not to scale.  
 © www.perspective.co.uk

### Energy Performance Graph



Call us on

**020 8840 5151**

[northfieldsales@sintonandrews.co.uk](mailto:northfieldsales@sintonandrews.co.uk)

[www.sintonandrews.co.uk](http://www.sintonandrews.co.uk)

Agents Note: Whilst every care has been taken to prepare these particulars, they are for guidance purposes only. All measurements are approximate and are for general guidance purposes only and whilst every care has been taken to ensure their accuracy, they should not be relied upon and potential buyers are advised to recheck the measurements.