



View of block



£400,000

Located in Apsley, this three-bedroom apartment is close to local amenities and within easy reach of Apsley train station. The property offers well-presented, modern accommodation throughout. The accommodation includes three double bedrooms, all with fitted wardrobes, with the main bedroom benefiting from an en-suite shower room as well as a separate family bathroom. The property also comprises an open-plan kitchen/ living room with integrated appliances and access to a private balcony. The apartment further benefits from two underground

Property Description

Entrance Hall

Doors to all bedrooms, bathroom and kitchen/ living room, storage cupboard housing water cylinder, electric radiator.

Kitchen/ living room

Range of floor and wall mounted units, integrated fridge freezer, integrated dishwasher, built in oven, electric hob with extractor fan over, 1 1/2 bowl stainless steel sink with drainer, two electric radiators, double glazed window to front, double glazed window to balcony.

Utility/ storage

Built in storage cupboard, space for washing machine.

Bedroom 1

Double glazed window to front, built in wardrobe, electric radiator, door to ensuite.

En-suite

WC, shower cubicle, hand wash basin, heated towel rail, extractor fan.

Bedroom 2

Double glazed window to front, built in wardrobe, electric radiator.

Bedroom 3

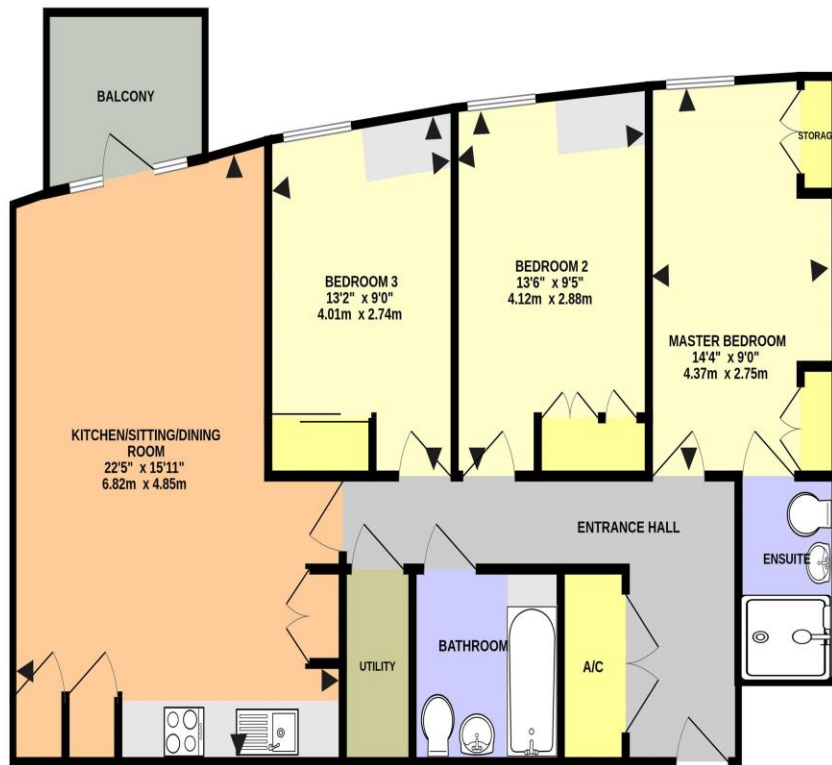
Double glazed window to front, built in wardrobe, electric radiator.

Bathroom

Panel bath with shower over, extractor fan, WC, hand wash basin in vanity unit, heater towel rail, shaver point.

Parking

Two allocated spaces in secure underground car park.



LANCASTER HOUSE, HEMEL HEMPSTEAD HP3 9GQ (PRODUCED FOR MICHAEL ANTHONY)

TOTAL FLOOR AREA: 915sq.ft. (85.0 sq.m.) approx.
 No accuracy to this image, text or measurements is guaranteed
 Made with Metropix C2026

MONEY LAUNDERING REGULATIONS 2017 intending purchasers will be asked to produce identification and proof of financial status when an offer is received. We would ask for your co-operation in order that there will be no delay in agreeing the sale.

THE CONSUMER PROTECTION REGULATIONS 2008 The Agent has not tested any apparatus, equipment, fixtures and fittings or services and so cannot verify that they are in working order or fit for the purpose. A Buyer is advised to obtain verification from their Solicitor or Surveyor. References to the Tenure of a Property are based on information supplied by the Seller. The Agent has not had sight of the title documents. A Buyer is advised to obtain verification from their Solicitor. You are advised to check the availability of this property before travelling any distance to view. We have taken every precaution to ensure that these details are accurate and not misleading. If there is any point which is of particular importance to you, please contact us and we will provide any information you require. This is advisable, particularly if you intend to travel some distance to view the property. The mention of any appliances and services within these details does not imply that they are in full and efficient working order. These particulars are in draft form awaiting Vendors confirmation of their accuracy. These details must therefore be taken as a guide only and approved details should be requested from the agents

33 Marlowes Hemel Hempstead Herts HP1 1LA
 01442 260025 | hemel@maea.co.uk