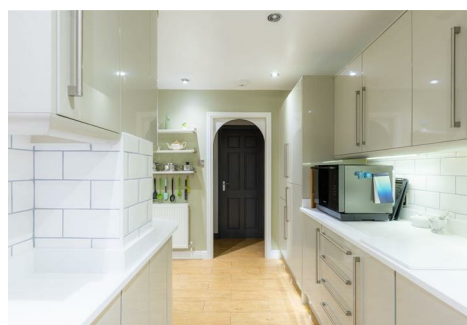




RE/MAX
Elite



106 High Street, Stourbridge, DY8 4NY
Offers in excess of £425,000

This beautifully presented and thoughtfully arranged bungalow occupies a generous plot and offers a rare combination of privacy, space and high-quality accommodation. Accessed via a gated driveway providing off-road parking and leading to a detached garage, the property immediately conveys a sense of seclusion and exclusivity.

Internally, the accommodation is well balanced and finished to a high standard throughout. A welcoming hallway leads to a modern fitted kitchen, complete with sleek cabinetry and integrated appliances, while the main living room provides a bright and inviting space featuring a focal fireplace and French doors opening directly onto a raised terrace. This creates a seamless connection between the interior and the beautifully landscaped gardens beyond.

The property enjoys a truly exceptional and beautifully landscaped garden, occupying a generous and clearly defined plot (as illustrated by the aerial imagery). Thoughtfully designed and meticulously maintained, the garden is arranged across multiple levels and zones, creating a series of distinct yet connected outdoor spaces.

Immediately to the rear of the property is an elevated terrace, ideal for outdoor dining and entertaining, formal paved and gravelled areas framed by well-stocked borders and mature planting. Meandering pathways guide through the garden, opening into a variety of secluded seating areas, each offering a different outlook and atmosphere.

Approach

With wrought iron gates set behind a dropped kerb offering access to a tarmacadam drive (approx. 20m in length), access to double garage, shrub borders beyond with stepped access to the front door

Entrance Hall

With a door leading from the front, doors to various rooms, storage cupboard (with central heating radiator), pull-down stepladder access to the (boarded) loft and a central heating radiator

Kitchen 12'2" x 12'1" (3.72 x 3.70)

With an opening from the entrance hall, a range of wall and base units with 12mm 'Hi-Macs' worktops, integrated appliances including fridge-freezer, oven and hob with extractor above, undermounted sink with filtered mixer tap and draining grooves, a door leading to the side access, a double glazed window to the front and a central heating radiator

Living Room 11'7" x 22'9" (3.54 x 6.94)

With a door leading from the entrance hall, wood burning stove with hearth, double glazed windows to the side, double glazed patio doors to the garden terrace and a central heating radiator

Bedroom 9'2" x 12'7" (2.80 x 3.85)

With a door leading from the entrance hall, a door leading to the en-suite, built in wardrobe storage with sliding doors, double glazed patio doors to the garden terrace and a central heating radiator

En-Suite

With a door leading from the bedroom, hot & cold 'Fountain' WC, hand wash basin, corner shower cubicle with glass screen, a double glazed window to the side and a central heating radiator

Bedroom 10'5" x 11'9" (3.19 x 3.59)

With a door leading from the entrance hall, a double glazed patio door to the side, a double glazed window to the front and a central heating radiator

Bathroom

With a door leading from the entrance hall, hot & cold 'Fountain' WC, hand wash basin, shower cubicle with glass screen, store cupboard with utility outlet points, a double glazed window to the side and a central heating radiator

Garden Terrace

With double glazed patio doors leading from the living room and principal bedroom, decorative concrete surround, fitted automatic sun awning with lighting bar

Garden Room 7'10" x 16'0" (2.41 x 4.88)

With a double glazed patio door leading from the garden, double glazed windows to the front, electrical supply and a wall mounted electric heater

Garden

One of the standout features of this bungalow is its deceptively large and exceptionally well-designed garden, set within a generous and clearly defined plot. Thoughtfully landscaped and arranged across multiple levels, the garden offers a series of distinct yet interconnected spaces, including an elegant raised terrace accessed directly from both the living room and principal bedroom, a beautifully arranged multi-level patio area, purpose built log-store and further paved seating areas ideal for entertaining. Mature planting, established hedging and specimen trees create a high degree of privacy throughout, while a contemporary and well-appointed garden room provides an excellent space for home working, hobbies similar.

Detached Double Garage 15'1" x 15'4" (4.61 x 4.68)

With a remote operated up-and-over style garage door to the front, a door to the side and power outlets throughout

Eco

The property benefits twelve 390 Watt black short frame photovoltaic panels with a 5.2 kwh battery system

Referral Fees

At RE/MAX Prime Estates, we are committed to full transparency in all aspects of our service.

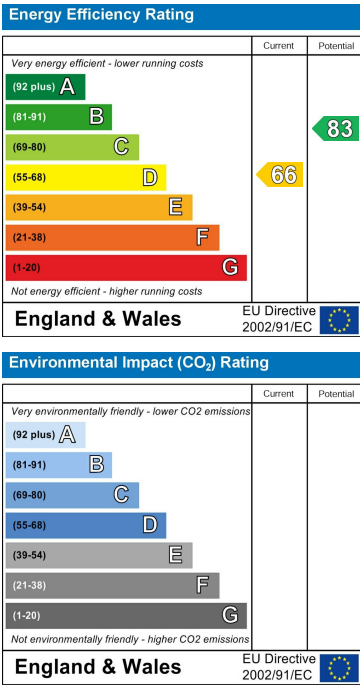
Floor Plan



Area Map



Energy Efficiency Graph



These particulars, whilst believed to be accurate are set out as a general outline only for guidance and do not constitute any part of an offer or contract. Intending purchasers should not rely on them as statements of representation of fact, but must satisfy themselves by inspection or otherwise as to their accuracy. No person in this firm's employment has the authority to make or give any representation or warranty in respect of the property.