



Hampshire Crescent

Offers in the region of £285,000

- Extended three-bedroom family home
- Open-plan extended kitchen/dining area
- Integral garage with garden access
- Impressive rear garden with patio, lawn and allotment area
- Decked seating area
- Double driveway providing off-road parking
- EPC Rating: D



 3  1  1

Pinkmove

01633 746088
team@pinkmove.co.uk



About the property

We are delighted to present this spacious and extended three-bedroom family home, ideally located on Hampshire Crescent. The property is well positioned for a range of local amenities including shops, cafés, and supermarkets, with reputable schools nearby making it an excellent choice for families. Public transport links are close by, with bus routes and Newport train station providing convenient access to surrounding areas and major cities. Nearby parks and green spaces offer ideal outdoor leisure opportunities.

The home has been well maintained by the current owners and offers a high standard of accommodation throughout. To the front of the property is a generous reception room, while the hallway provides access to the integral garage and a door leading out to the rear garden. The kitchen has been extended from the original galley layout into a bright open-plan kitchen and dining space overlooking the garden.

Outside, the impressive rear garden is well maintained and ideal for relaxing or entertaining. It features patio and lawn areas, established shrubs and flowers, as well as an allotment section to the rear. Additional benefits include storage sheds and a decked area, perfect for alfresco dining.

To the front, a double driveway provides off-road parking for at least two vehicles, with further on-street parking available on this residential road.





Accommodation

Living Room

Kitchen

Bedroom 1

En-Suite

Bedroom 2

Bedroom 3

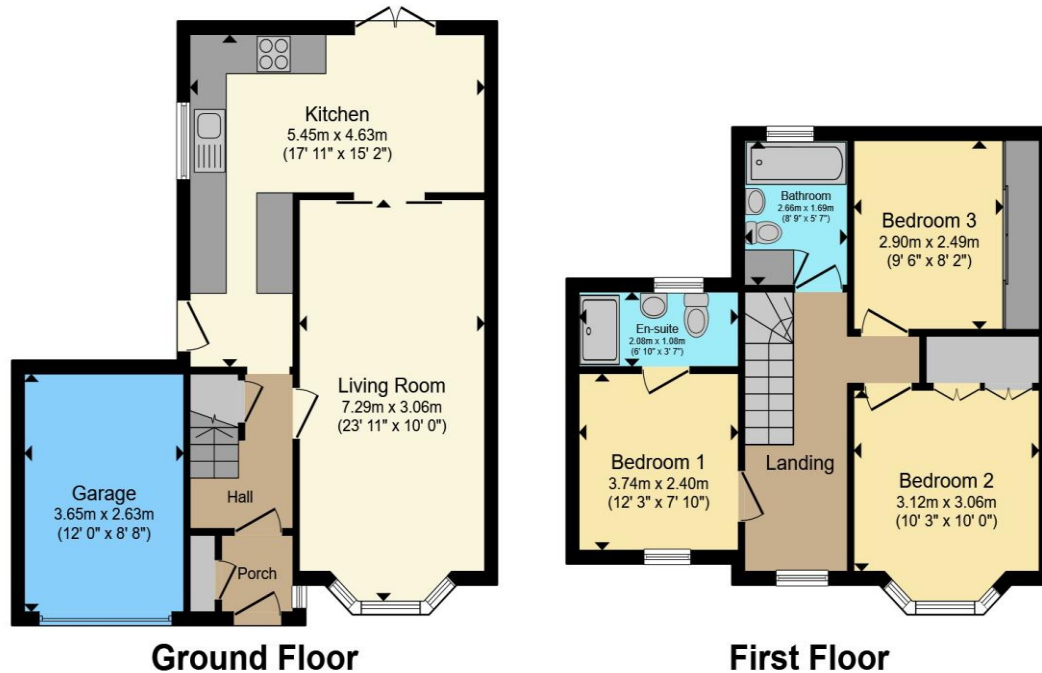
Bathroom

01633 746088

team@pinkmove.co.uk

Pinkmove

Floorplan



Total floor area 95.5 sq.m. (1,027 sq.ft.) approx

This floor plan is for illustrative purposes only. It is not drawn to scale. Any measurements, floor areas (including any total floor area), openings and orientation are approximate. No details are guaranteed, they cannot be relied upon for any purpose and they do not form part of any agreement. No liability is taken for any error, omission or misstatement. A party must rely upon its own inspection(s). Powered by www.focalagent.com

Pinkmove

Important Information

Note while we endeavour to make our sales details accurate and reliable, if there is any point which is of particular interest to you, please contact the office and we will be pleased to confirm the position for you. We have not personally tested any apparatus, equipment, fixtures, fittings or services and cannot verify they are in working order or fit for their purposes. Nothing in these particulars is intended to indicate that carpets or curtains, furnishings or fittings, electrical goods (whether wired or not). Gas fires or light fittings or any other fixtures not expressly included form part of the property offered for sale. This computer generated Floorplan, if applicable, is intended as a general guide to the layout and design of the property. It is not to scale and should not be relied upon for dimensions. Tenure: We cannot confirm the tenure of the property as we have not had access to the legal documents. The buyer is advised to obtain verification from their solicitor or surveyor.

Peter Alan Limited is registered in England and Wales under company number 2073153. Registered Office is Cumbria House, 16-20 Hockliffe Street, Leighton Buzzard, Bedfordshire, LU7 1GN. VAT Registration Number is 500 2481 05. For activities relating to regulated mortgages and non-investment insurance contracts, Peter Alan Limited is an appointed representative of Connells Limited which is authorised and regulated by the Financial Conduct Authority. Connells Limited's Financial Services Register number is 302221. Most buy-to-let

