



## Tower Close, NW3

£2,950,000

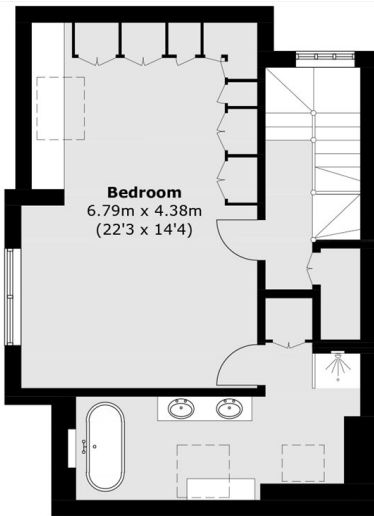
A substantial chain free freehold house arranged over five floors, with five bedrooms and three bathrooms. The property features a 32ft reception room, private patio garden, roof terrace, off-street parking, and a garage.

Tower Close is a quiet residential address ideally positioned between Belsize Park and Swiss Cottage. The area offers easy access to local cafés, shops, and the open spaces of Primrose Hill and Regent's Park. Excellent transport links include Swiss Cottage (Jubilee line) and Belsize Park (Northern line).

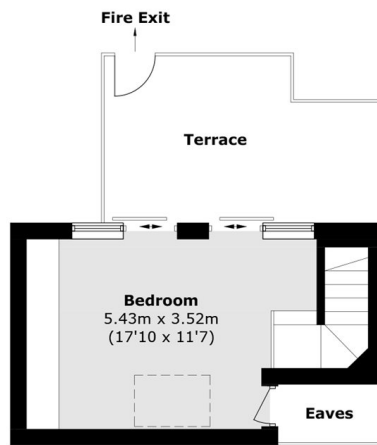
### Features

- Five Bedrooms
- Patio Garden
- Freehold
- Chain Free
- Off Street Parking
- Approximately 2754 Sq.Ft

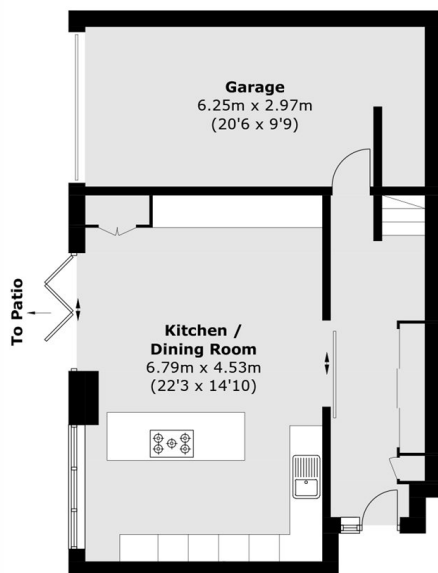
# Tower Close, London, NW3



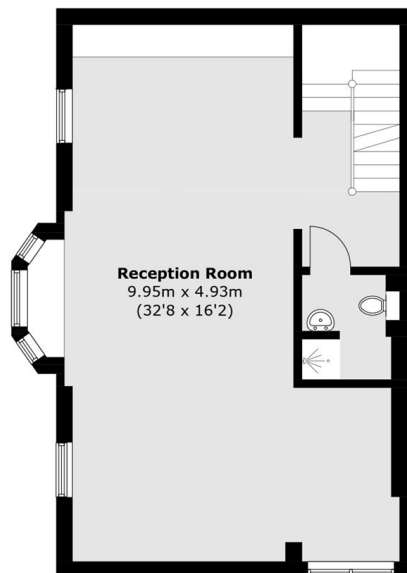
**Third Floor**



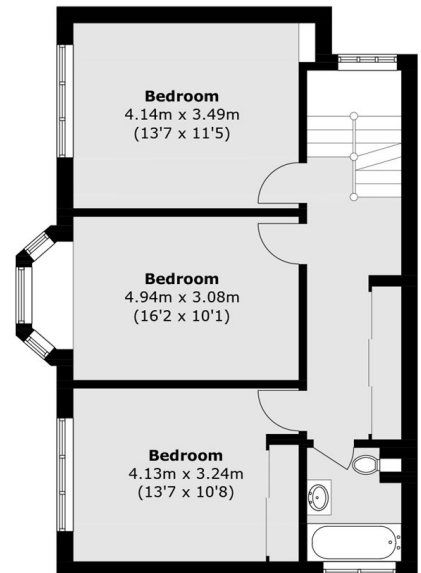
**Fourth Floor**



**Ground Floor**



**First Floor**



**Second Floor**

Total area (approx.): 255.9 sq. m (2,754.5 sq. ft)  
Terrace: 14.6 sq. m (157.1 sq. ft)  
(Excluding Eaves / Including Garage)