



Abbotshall Road, SE6

£800,000

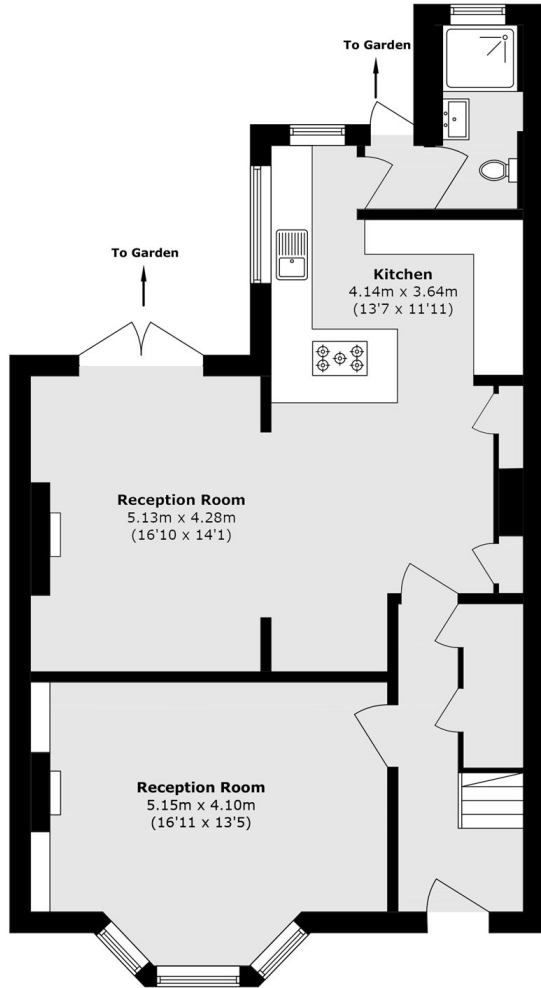
This well-proportioned four bedroom end-terrace house offers generous living space arranged over two floors. On the ground floor, you'll find two large reception rooms with one leading to the well-sized and functional kitchen, with direct access to a large, private rear garden.

Abbotshall Road is a quiet residential road located in the popular Corbett Estate. It has convenient access to Bellingham, Catford and Catford Bridge train stations along with the open spaces of Forster Memorial Park and Mountsfield Park.

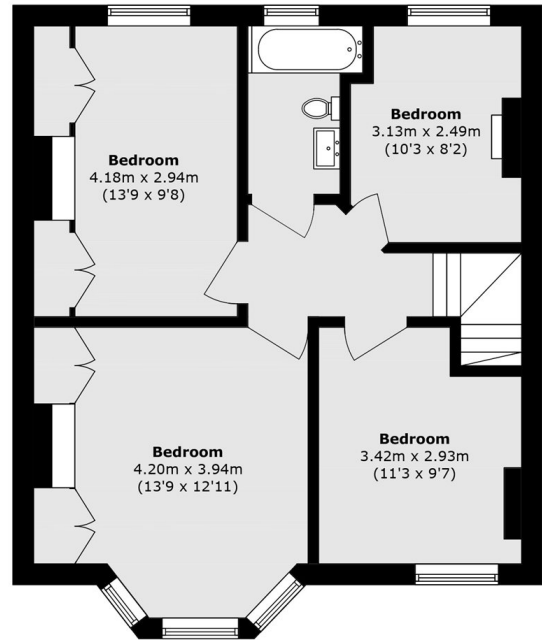
Features

- Freehold
- End Of Terrace
- Potential To Extend
- Large Rear Garden
- Corbett Estate
- Quiet Residential Road

Abbotshall Road, London, SE6



Ground Floor



First Floor

Total area (approx.): 127.3 sq. m (1370.2 sq. ft)