



BRITISH
PROPERTY
AWARDS

2025



GOLD WINNER

ESTATE AGENT
IN DEREHAM



homeworks
estate agent



54 Swaffham Road
Dereham, NR19 2DL

☎ (01362) 65 44 44
✉ sales@homeworks-uk.com
🌐 www.homeworks-uk.com

Market Street, Shipdham, Thetford, IP25

Offers Over £600,000

🛏 6 🚿 2 🚗 3

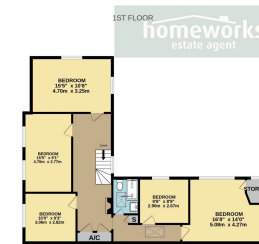


- **** DETACHED CHARACTER PROPERTY IN VILLAGE LOCATION ****
- **SIX DOUBLE BEDROOMS**
- **EXCEPTIONAL 20' ORANGERY**
- **LARGE, ENCLOSED REAR GARDEN**
- **MATURE, ENCLOSED REAR GARDEN**
- **WELL PRESENTED THROUGHOUT WITH PERIOD FEATURES**
- **MODERN 21'10 FITTED KITCHEN WITH ADJOINING DINING ROOM**
- **TWO SHOWER ROOMS & SEPARATE W/C**
- **DRIVEWAY PARKING**
- **** CALL TODAY TO AVOID MISSING OUT ****

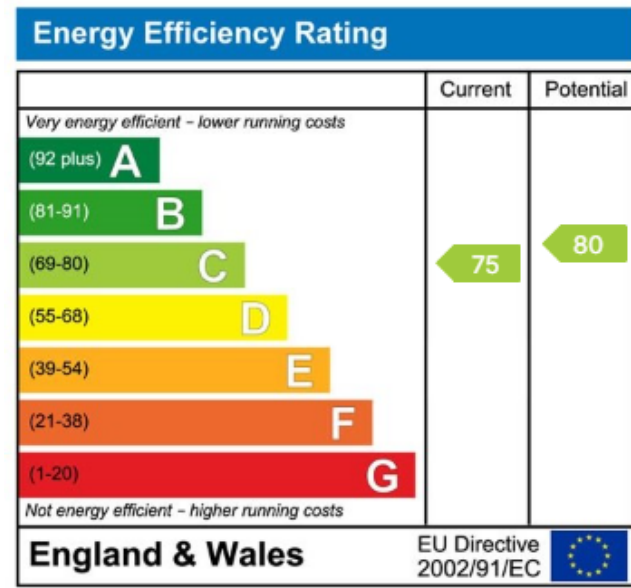




Spacious and highly versatile, this substantial detached home in the heart of Shipdham offers six double bedrooms and generous living accommodation throughout. Highlights include a stunning 20' orangery, a 21'10 modern fitted kitchen with adjoining dining space, two shower rooms plus a separate W/C, and a large enclosed rear garden. The property also benefits from ample driveway parking for multiple vehicles and flexible accommodation ideally suited to modern family living. Situated within a well-served village with easy access to Dereham and the A47, this impressive home combines space, convenience, and village charm.



While every effort has been made to ensure the accuracy of the floorplan contained herein, measurements of floors, walls, windows, etc. are given as approximate and should not be relied upon for the purposes of a contract. The floor plan, specifications and details are given as a guide only and the purchaser should verify the same before completion of the purchase.



C AMOS MNAEA Managing Director
VAT no. 185 328 683

