



82 Bridge Street, Pershore

Pershore

Guide Price **£575,000**



82 Bridge Street

Pershore

- Impressive detached family home occupying a substantial plot in a highly sought-after location.
- Approximately 1,300 sq. ft. of versatile accommodation, excluding the detached garage.
- Three generous double bedrooms plus a separate first-floor study/home office.
- Spacious dual-aspect sitting room offering an abundance of natural light.
- Well-appointed kitchen/breakfast room with adjoining utility room.
- Beautifully refitted contemporary family bathroom with quality fixtures and fittings.
- Extensive private rear gardens featuring mature planting, vegetable beds, greenhouse and generous entertaining terrace.
- Large driveway providing ample off-road parking for multiple vehicles together with a detached garage.
- Just a two-minute walk to Pershore town centre, offering excellent access to independent shops, cafés, restaurants and everyday amenities.
- An exceptional opportunity to acquire a spacious family home combining generous gardens, flexible accommodation and a prime central location.



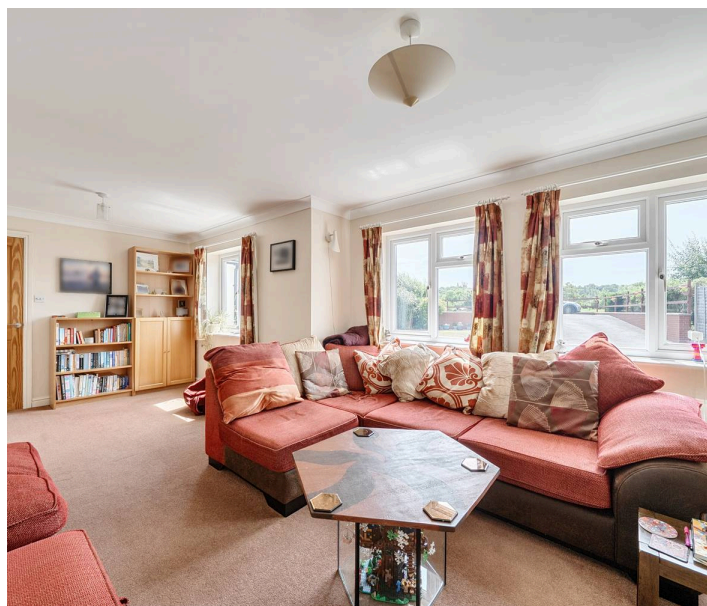
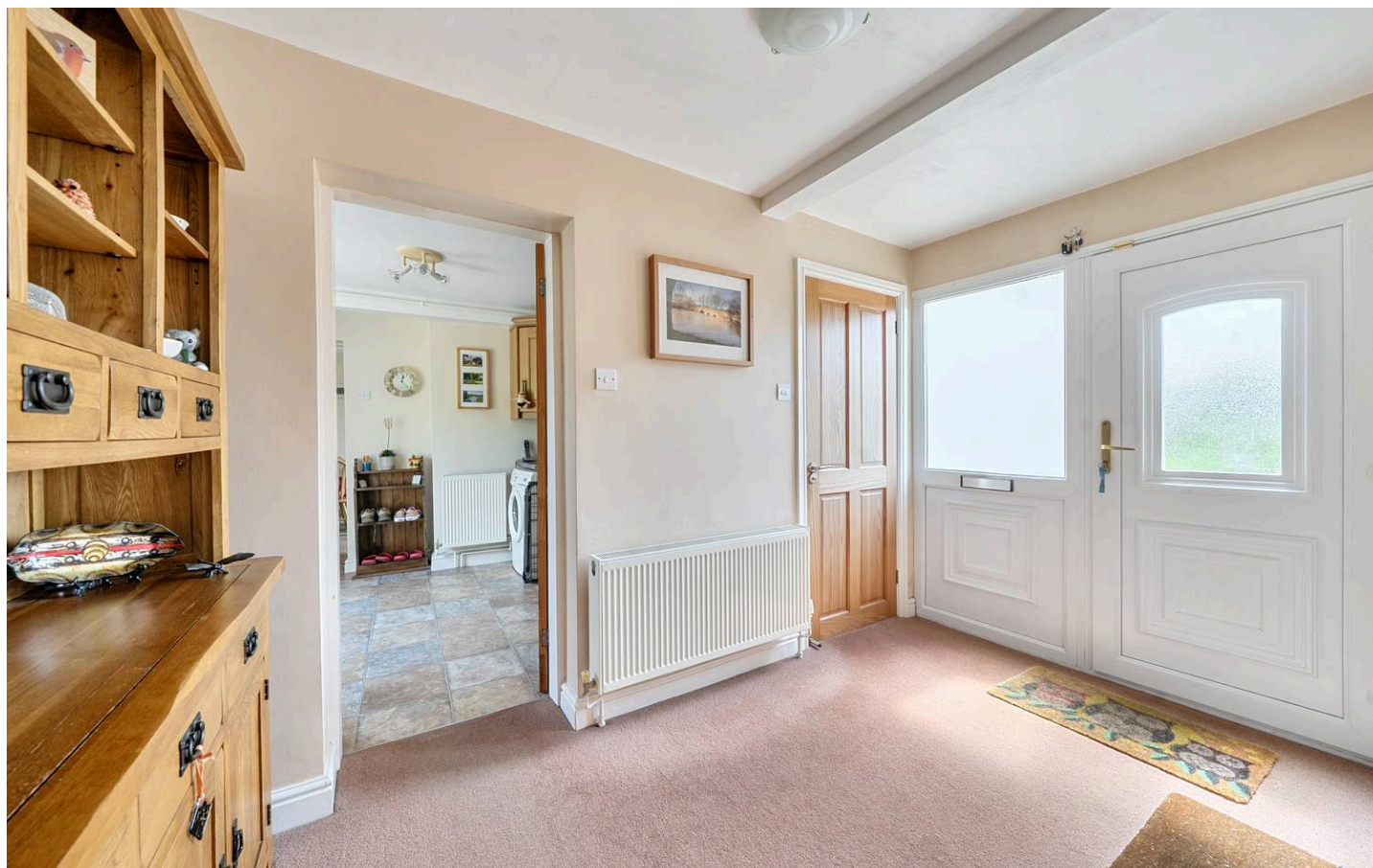
Occupying a substantial plot in one of Pershore's most convenient locations, this impressive detached family home offers spacious and versatile accommodation extending to approximately 1,300 sq. ft., excluding the garage. Beautifully presented throughout, the property enjoys an enviable position just a two-minute walk from Pershore town centre, whilst benefitting from extensive gardens, generous parking and a wealth of flexible living space ideal for modern family life.

Approached via a large driveway providing ample off-road parking for numerous vehicles, the property immediately impresses with its attractive façade, detached garage and beautifully landscaped front gardens. The welcoming entrance hall creates an inviting first impression and leads through to the well-planned accommodation.

At the heart of the home is a spacious fitted kitchen/breakfast room, offering an excellent range of oak-style units, integrated appliances and ample space for everyday dining. Adjoining the kitchen is a practical utility room with external access, providing additional storage and laundry facilities whilst keeping the main living areas clutter-free.

The generously proportioned sitting room is a superb space for both relaxing and entertaining, filled with natural light from multiple windows overlooking the front aspect. The room offers excellent flexibility for larger furniture and creates a warm and inviting environment for family gatherings.

The ground floor also offers two excellent double bedrooms, both enjoying pleasant views over the mature rear gardens. The principal ground floor bedroom benefits from extensive fitted wardrobes, whilst the stylish family bathroom has been beautifully modernised with quality fittings, contemporary tiling, a bath with rainfall shower over, vanity unit and WC.



Ascending to the first floor, the accommodation continues with a further double bedroom together with a separate study/home office, making this an ideal arrangement for those working from home or for families requiring flexible living space. The first-floor bedroom enjoys elevated views across the surrounding area and offers a peaceful retreat away from the main living accommodation.

One of the property's most outstanding features is undoubtedly its exceptional plot. The beautifully maintained rear garden offers an extensive expanse of lawn bordered by mature trees, established shrubs, colourful planting and well-stocked flower beds, creating a wonderful degree of privacy and tranquillity. A generous paved terrace provides the perfect setting for outdoor dining and summer entertaining, whilst a greenhouse and productive vegetable garden will undoubtedly appeal to keen gardeners. The detached garage offers excellent storage or workshop potential, complemented by further external storage.

Rarely does a property combine such generous gardens, versatile accommodation and a central location so successfully. With Pershore's shops, cafés, restaurants and amenities only moments away, yet enjoying a peaceful and private setting, this is a truly exceptional home that will appeal to families, professionals and those seeking spacious accommodation in one of Worcestershire's most desirable market towns.





Bridge Street, Pershore, WR10

Approximate Area = 1300 sq ft / 120.8 sq m

Limited Use Area(s) = 73 sq ft / 6.8 sq m

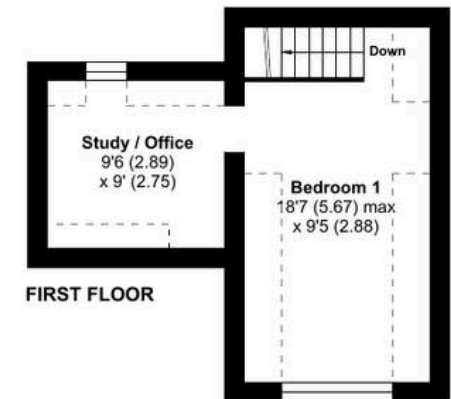
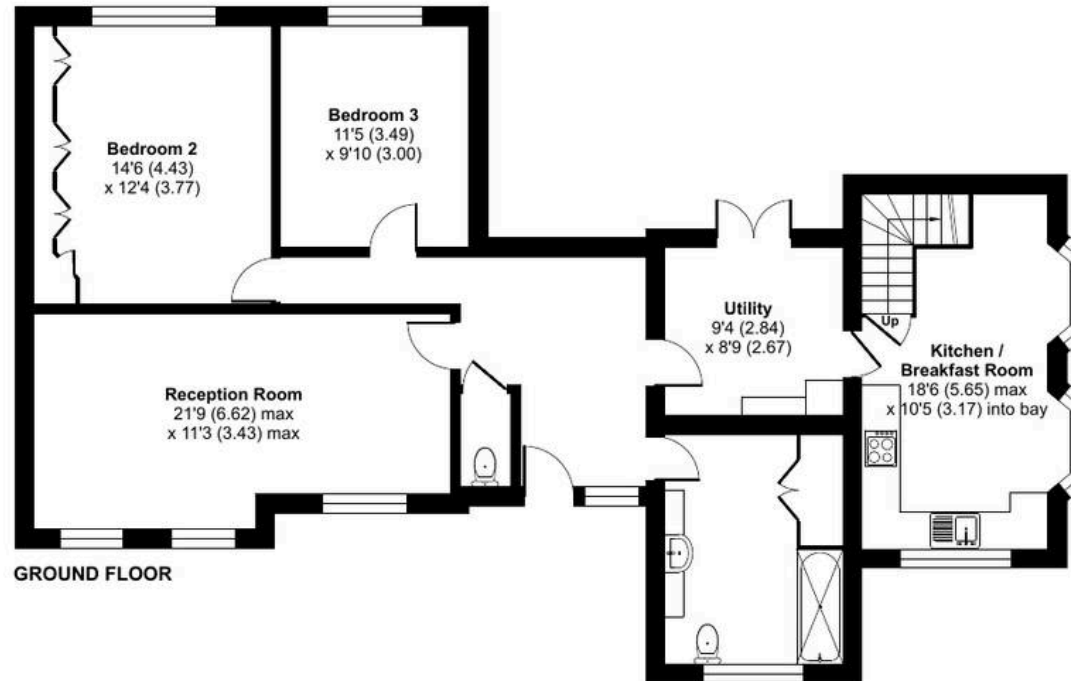
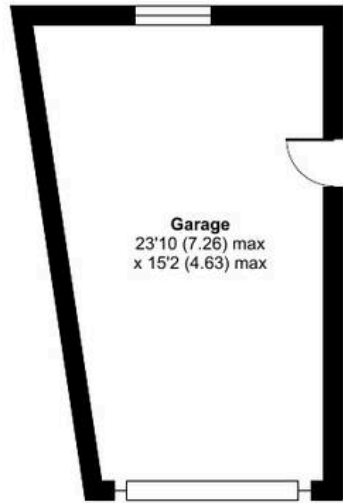
Garage = 319 sq ft / 29.6 sq m

Total = 1692 sq ft / 157.2 sq m

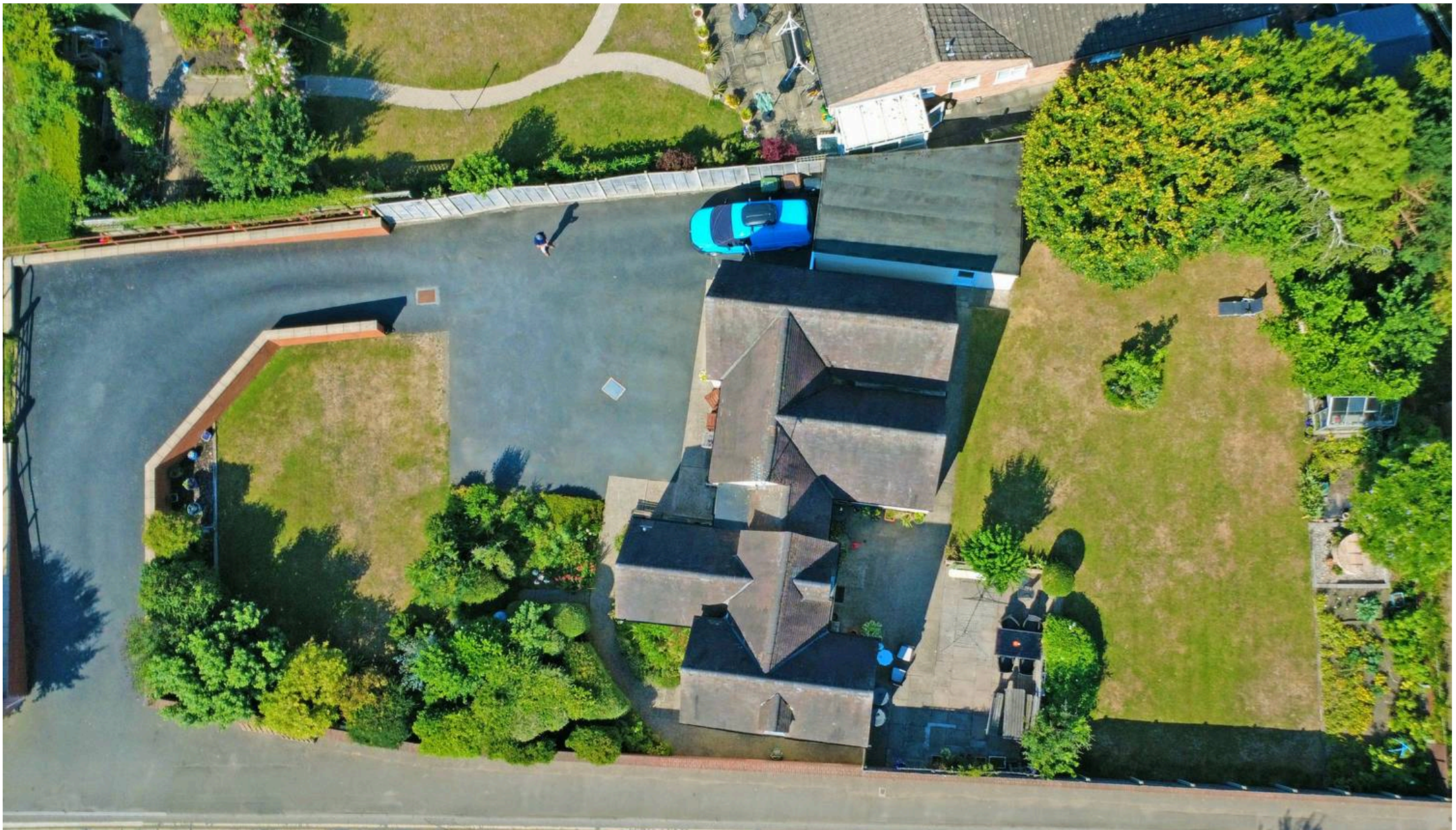
For identification only - Not to scale



Denotes restricted head height



Floor plan produced in accordance with RICS Property Measurement 2nd Edition, Incorporating International Property Measurement Standards (IPMS2 Residential). © nchecom 2026. Produced for Jason Jones & Associates. REF: 1485906



Jones & Associates

14 Bridge Street, Pershore - WR10 1AT

01386 291010 • info@jjaa.co.uk • www.jjaa.co.uk/